



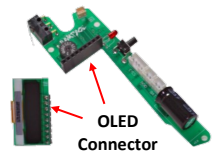
RAMPAGE OLED SCREEN REPLACEMENT GUIDE

Thank you for purchasing your Rampage product! Installing your APE Replacement OLED screen is an easy process and takes only a few minutes. First, **PLEASE READ THROUGH THE INSTRUCTIONS COMPLETELY BEFORE ATTEMPTING TO INSTALL YOUR NEW OLED REPLACEMENT SCREEN.** If you are unsure of how to proceed, **STOP** and contact us at Sales@GoApeOnline.com for assistance. Also, **THE OLED SCREEN IS MADE OF GLASS AND CAN EASILY SHATTER WHEN PRYING THE OLD OLED SCREEN FROM THE CIRCUIT BOARD. EYE PROTECTION IS HIGHLY RECOMMENDED.**

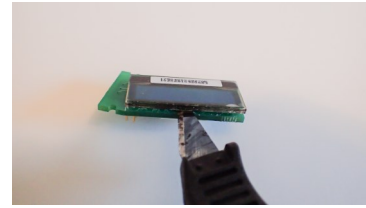
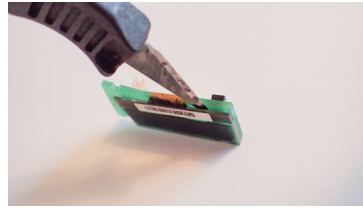
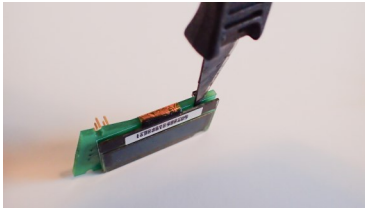


STEP 1 - Disconnect the eyes, solenoid and battery plug (if necessary) and remove the main Rampage Circuit board from your marker.

STEP 2 - If your APE Rampage board has a daughter board that holds your OLED Display, gently remove the it from the main circuit board. If your OLED is directly attached to the main circuit board, skip this step.

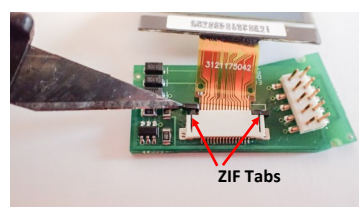
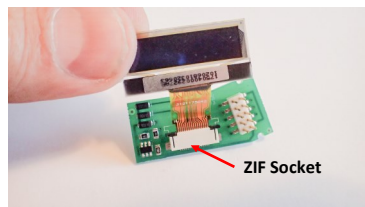


STEP 3 - Using a razor blade carefully insert the edge of the razor blade between the screen and the surface of the circuit board and pry the OLED screen away from the circuit board.



CAUTION: BE CAREFUL NOT TO DAMAGE THE CIRCUIT BOARD WITH YOUR RAZOR. IF YOUR SCREEN IS DIFFICULT TO DETACH FROM YOUR BOARD, TRY USING A HAIRDRYER TO SOFTEN THE EXISTING TAPE. DO NOT OVERHEAT!

STEP 4 - The OLED Screen is connected to the circuit board using a ZIF socket. To detach the ribbon cable from the ZIF socket, slide the 2 grey tabs up. The OLED screen should easily separate from the ZIF socket.



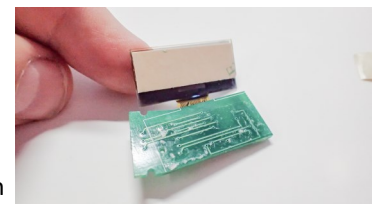
STEP 5 – Using the supplied double-sided tape, remove the protective strip on one side and apply the sticky side to the back of your new OLED screen.



STEP 6 - Insert the end of the ribbon cable of the new OLED screen into the ZIF socket and lock into place by sliding the grey tabs on the down.

STEP 7 - Remove the protective strip from the back of the double-sided tape on the new OLED Display. Position the OLED screen back to the original position and gently apply pressure to adhere to the circuit board. Be sure it is aligned before touching it to the circuit board.

STEP 8 - Re-install the main Rampage Circuit board, reconnecting eyes, solenoid and battery plug (if necessary).



STEP 9 - Once in place, carefully align the pins on the OLED Board with the connector on the main board (if necessary). Press the OLED board into the connector until completely seated.

STEP 10 - Re-connect the eyes, solenoid and battery plug (if necessary). Connect battery and power on. Your Screen should now be functioning!