

*dye*  
**MXR** *MECHANICAL  
FRAME*  
DESIGNED FOR THE ART OF WINNING

# MXR Mech Frame Manual



## DESIGNED IN THE REPUBLIC OF CALIFORNIA

Designed in the Republic of California. For more info go to [dypaintball.com](http://dypaintball.com)

**DYE USA:** 12105 Kirkham Road, Poway, CA, 92064, USA

**DYE Europe:** Dye Precision Germany, GmbH, Im Lehbühl 6, DE-77652 Offenburg, Germany

**DYE Taiwan:** No. 47, DaWei Rd, Dali Dist, Taichung City 412, Taiwan

Copyright ©2026 DYE Precision, Inc. The stylized “dye” logo, “sphere” logo are either registered trademarks, or design trademarks of DYE Precision, Inc

⚠ **WARNING:** Cancer and Reproductive Harm, [www.P65Warnings.ca.gov](http://www.P65Warnings.ca.gov)

MADE IN TAIWAN



**D Y E P A I N T B A L L . C O M**



# WARNING

IMPORTANT SAFETY INSTRUCTIONS AND GUIDELINES

- This Product is not a toy. Misuse may cause serious injury or death. Paintball safety rules must be followed at all times.
- Please read, understand and follow the directions in the owner's manual.
- Eye protection that is designed specifically for paintball and meets ASTM/CE standards must be worn by user and persons within range.
- Recommend 18 years or older to purchase. Person under 18 must have adult supervision.
- Always treat the Paintball marker as if it were loaded and able to fire.
- Do not exceed 850 psi input pressure.
- Only use .68 caliber paintballs that meet ASTM/CE standards.
- Ensure all air lines and fittings are tightened and secured before gassing up the paintball marker.
- Always chronograph the paintball marker before playing paintball.
- Never shoot the marker at velocities in excess of 300 feet per second, or at velocities greater than local or national laws allow.



# WARNING

IMPORTANT SAFETY INSTRUCTIONS AND GUIDELINES

- Never look down the barrel or into breech area of the paintball marker.
- Compressed gas is dangerous, do not allow compressed gas to come in contact with your skin or try to stop a leak by covering it with your hand.
- Always fit a barrel blocking device to your paintball marker when not in use on and off the field of play.
- The owner's manual and any related warnings or instructions should always accompany the product for reference or in the event of resale and new ownership.
- Do not point the paintball marker at anything that you do not intend to shoot.
- Do not shoot at people, animals, houses, cars, or anything not related to the sport of paintball.
- Do not fire the marker without the bolt secured in the marker.
- If you read these instructions and do not fully understand them or are unsure of your ability to make necessary adjustments properly, call DYE Precision or your local pro shop for help.

## MXR Mechanical & Single Trigger Electronic Frame Kit

The MXR mechanical frame kit offers industry-leading flexibility and may be used in either mechanical configuration or single trigger electronic configuration.



Get personalized help at the  
**DYE Tech Central Facebook Group**

# Installation

## STEP1: REMOVE FRAME AND BATTERIES

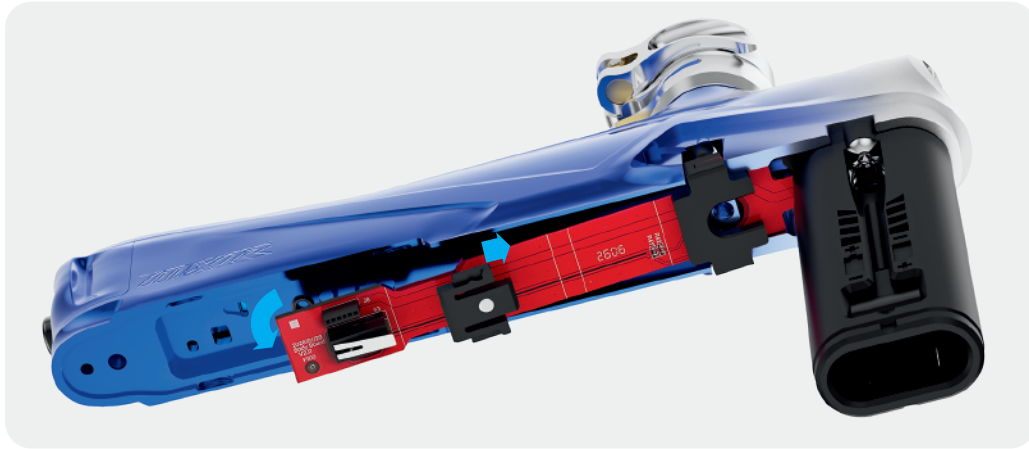
When servicing your marker:

- Make sure your hopper is removed from the MXR.
- Make sure there are no paintballs in the breach of the MXR.
- Always remove the air supply and relieve all gas pressure in the MXR before disassembly.
- Remove front grip and batteries.
- Remove bolt kit.
- Remove front and rear frame mounting screws with a 3/32" allen wrench.



The MXR utilizes a positive force conector to link the body and frame electrical components together. There are no wires to disconnect when removing the frame from the body.

## STEP2: REMOVE BODY PCB



- Remove body board locking clip by sliding it towards front of marker.
- Remove the Body board by lifting the board evenly until the Eye towers clear the bod. Next pull the board rearward at an angle so that the battery springs clear the access hole in the battery housing
- Install Mech spacer plate.
- Install locking clip.



## STEP 3: TRANSFER HYPER 6/ASA ASSEMBLY



- Remove the sticky grip from E-Frame.
- Using a 3/32" Allen wrench, unscrew and remove the 2 screws retaining the Hyper 6™ assembly. Pull down to remove the assembly from the frame.
- Install the Hyper 6™ assembly on to the new frame by following the above steps in reverse.

## STEP4: INSTALL FRAME AND GRIPS



- Install frame onto body using the screws removed in STEP 1
- Leave batteries out
- Install battery door
- Install front grip
- Install rear grip
- Install bolt kit

## SAFETY OPERATION



- The safety switch is located at the front of the trigger guard.
- The safety condition indicator is located above the front of the trigger guard on both sides of the frame.
- Sliding the safety switch forward will dis-engage the safety, making the gun ready to fire.
- When the marker is NOT safe the indicator will display RED.

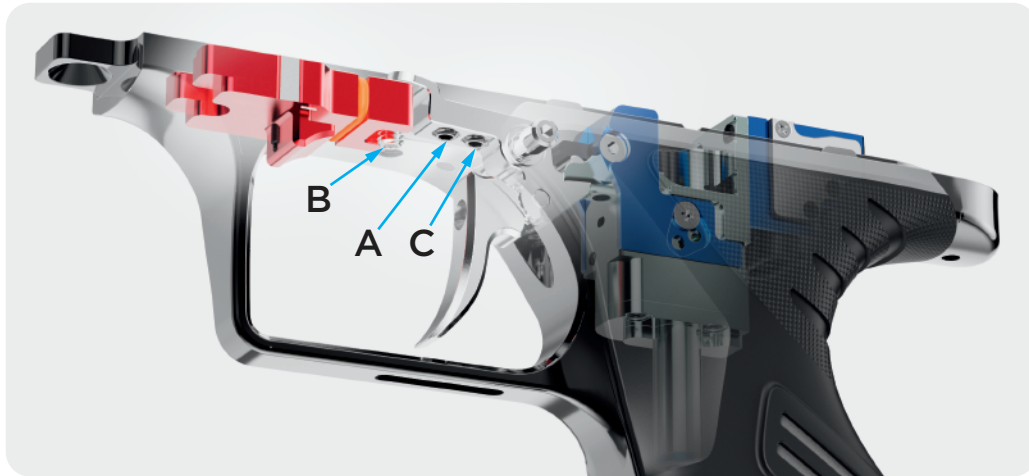


- When the safety is enabled the MXR mech is still live marker until the air system has been fully removed.
- Ensure that a barrel blocking device is attached when the marker is set to safe.

## TRIGGER ADJUSTMENT

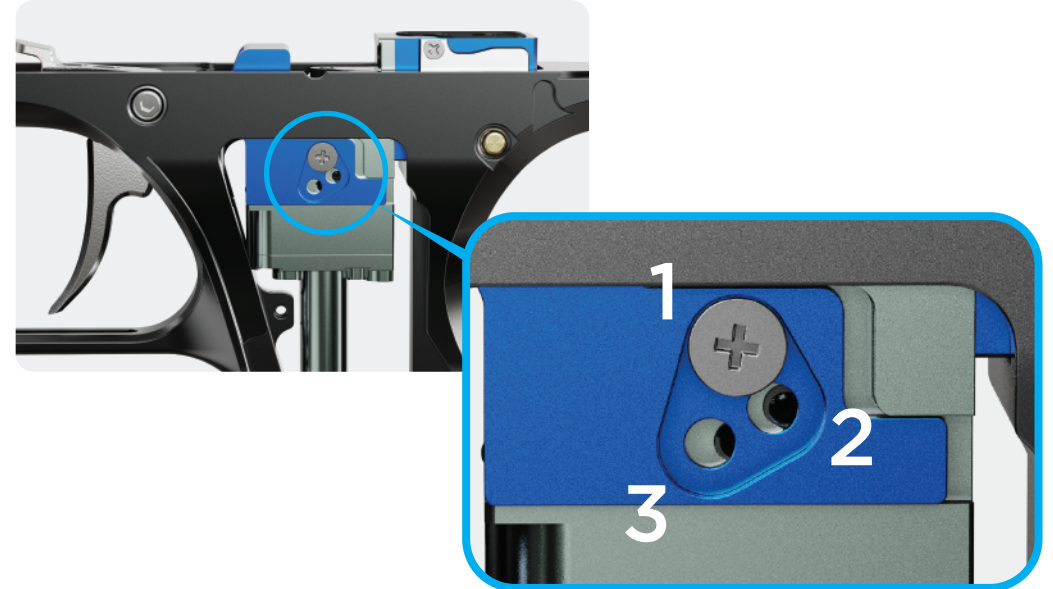
- A. Pre-travel adjustment
- B. Post-travel adjustment
- C. Breakaway magnet tension adjustment

If the safety switch cannot be engaged or disengaged, adjust the Pre-Travel screw to allow more pre-travel in the trigger until the safety switch operates freely.



- Always make sure the marker is and de-gassed with a barrel blocking device installed and no paintballs are in the marker or loader before adjusting the trigger.
- The MXR Mech trigger has a large range of adjustability and must be adjusted with care. Adjustment of the trigger screws to the extremes of their range and incorrect adjustment may prevent the safety switch from functioning correctly.

## LEVER RATIO ADJUST



### Adjust the trigger lever ratio:

- Remove the sled lock screw.
- Slide the blue lever sled to the desired position.
- Install the sled lock screw into the aligned screw hole.

- #1 - SHORTEST, HEAVIEST PULL
- #2 - MIDDLE, STANDARD FACTORY SETTING
- #3 - LONGEST, LIGHTEST PULL

## E-Trigger Installation

### STEP 1: REMOVE PCB COMPONENTS AND SOLENOID ASSEMBLY FROM E-FRAME



- Unplug the solenoid wire from the main PCB.
- Press out the brass solenoid retain pin to the right.
- Lift the solenoid assembly out of the frame.
- Carefully press the OLED Screen assembly out the right side of the frame.
- Remove the 2 Phillips head screws retaining the main PCB board.
- Remove the Phillips head screw retaining the transfer board to the top of the frame.
- Carefully unplug the main PCB for the PSI sensor by lifting the main PCB out the left side of the frame.
- Leave the PSI sensor installed in the frame.

## E-Trigger Installation

### STEP 2: INSTALL E COMPONENTS INTO MECH FRAME



- After removing the mech solenoid from the mech frame.
- Install the E components by following the PCB Component removal steps in reverse order.

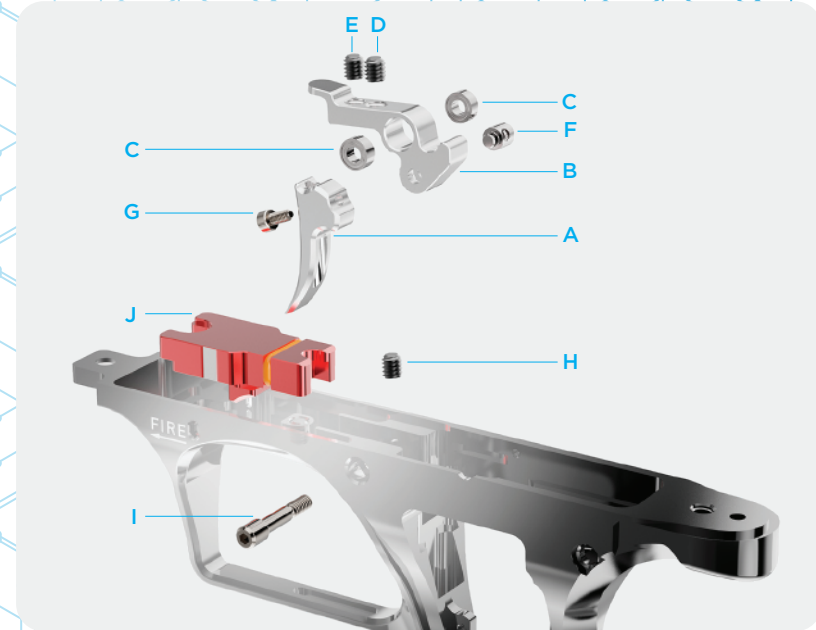
## E-Trigger Installation

### STEP 3: TRANSFER THE Hyper 6™ TO THE FRAME



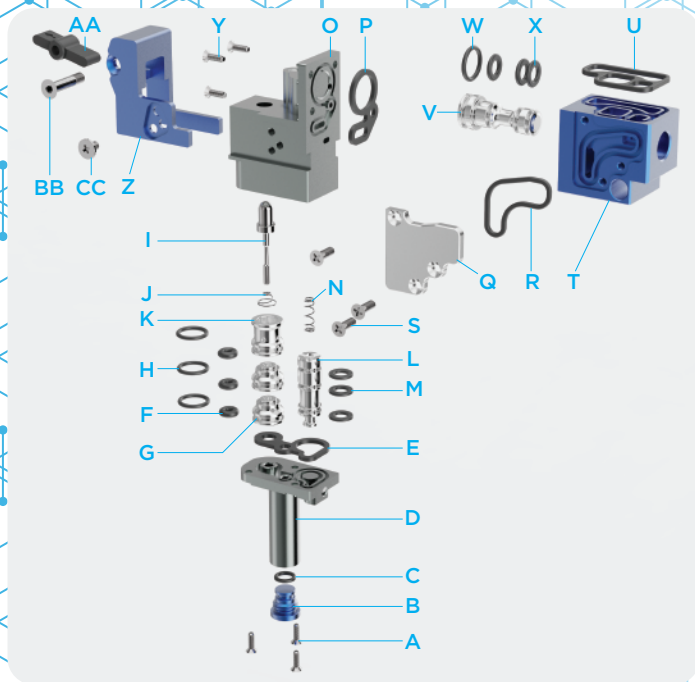
- Remove the sticky grip panels.
- Using a 3/32" allen wrench, unscrew and remove the 2 screws retaining the Hyper 6™ assembly. Pull down to remove the assembly.
- Install the Hyper 6™ assembly on to the new frame by following the above steps in reverse.

## TRIGGER & SAFETY COMPONENTS



- A. MXR mech trigger blade
- B. MXR trigger base
- C. 2x - trigger bearings
- D. 8-32 x 3/16" - pre travel adjustment screw
- E. 8-32 x 3/16" break away magnet force adjustment screw
- F. Trigger axel
- G. M3 x 8mm trigger rake adjustment screw
- H. 8-32 x 3/16"- post travel adjustment screw
- I. MXR trigger pin
- J. Safety sled

# SOLENOID COMPONENTS



- |  |  |
|--|--|
| A. 3x screw 1.6 x.35mm, 5mm                  | P. Gasket – MXR mech pilot housing           |
| B. Pilot chamber plug                        | Q. MXR solenoid housing slide plate          |
| C. 3.5 x 1mm oring - pilot chamber plug seal | R. Gasket - MXR solenoid housing slide plate |
| D. Pilot chamber housing                     | S. 3x screw 1.6 x.35mm, 5mm                  |
| E. Gasket - pilot chamber housing            | T. MXR mech solenoid housing                 |
| F. 3x - #003 orings - firing pin can inner   | U. Gasket – solenoid housing                 |
| G. 2x – lower firing pin can                 | V. MXR solenoid spool                        |
| H. 3x - 6 x 1mm orings - firing pin outer    | W. 6 x 1mm oring - solenoid spool            |
| I. Firing pin                                | X. 3x - #6 dye spool seals (custom)          |
| J. Firing pin spring                         | Y. 3x screw 1.6 x.35mm, 5mm                  |
| K. Top firing pin can                        | Z. Lever carrier                             |
| L. Pilot timing spool                        | AA. Pilot lever                              |
| M. 3x - #6 dye spool seals (custom)          | BB. Pilot lever pin                          |
| N. Pilot timing spring                       | CC. M2 x 3 lever ratio lock screw            |
| O. MXR mech pilot housing                    |  |

## MXR MECH FRAME WARRANTY AND LEGAL INFORMATION

### WARRANTY

DYE Precision, Inc. warrants for one year to the initial retail purchaser, from the initial date of purchase, that the MXR Mech frame and components are free from defects in materials and workmanship, subject to the requirements, disclaimers and limitations of this warranty. Disposable parts, normal maintenance and standard wear and tear parts such as batteries, O-rings and seals are not warrantied. The solenoid and electronic components on the marker are warrantied for six months. This warranty does not cover scratches, nicks, improper disassembly, improper re-assembly, misuse, neglect or improper storage. Modification to the product will void the warranty. The only authorized lubricant for the marker is Slick Lube™. Use of any other lubricant will void your warranty. This warranty is limited to repair or replacement of defective parts with the customer to pay shipping costs. Online warranty registration must be completed for warranty to be in effect. A copy of the original proof of purchase is needed to validate warranty. This warranty is not transferable. This warranty does not cover performance. Paintball markers are non-refundable.

### TECHNICAL SUPPORT

Our Technical Support Departments are open Monday through Friday.  
 DYE Precision, Inc. can be reached at 858-536-5183 ext.275 from 8am to 5pm PST.  
 DYE Europe can be reached at +49 781 1203020 from 9am to 5pm GMT.  
 DYE Asia can be reached at 886 (0) 4-2407-9135 from 9am to 5pm GMT +8 hours.  
 Additional support and international contacts are available through our web site, [www.dyepaintball.com](http://www.dyepaintball.com) or DYE Tech Central facebook group.

### DISCLAIMER

The specifications & photographs in this material are for information and general guidance purposes only. Our products are continually updated and changes may be made to specification, design or appearance from time to time. These are subject to change without notice. Contents of box may therefore vary from owner's manual. For details of changes in design, specification or appearance consult your local distributor or dealer. The ARC-X™ BOLT, Hyper6™ and Slick Lube™ are registered trademarks. Design rights, copyrights and all other rights reserved. All patterns, drawings, photographs, instructions or manuals remain the intellectual property of the manufacturer.

MXR and ARC-X™ Bolt: DYE Precision Inc. U.S. and Int'l PATENTS PENDING U.S.  
 PATENT # 5,613,483; 5,881,707; 6,474,326; 7,765,998; 7,997,260  
 All rights will be strictly enforced. For a complete list of patents visit [www.dyeprecision.com/patents](http://www.dyeprecision.com/patents)

For the most updated information go to

**DYEPAINBALL.COM**

# MEMO