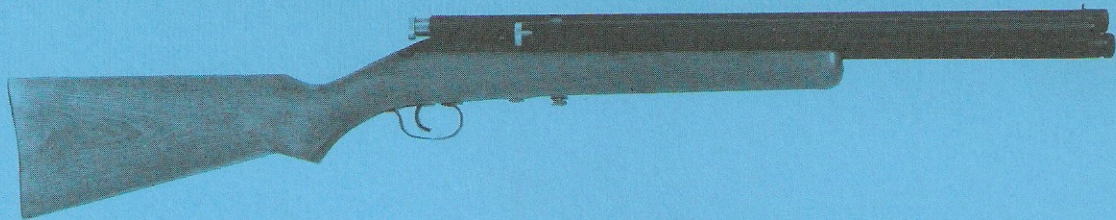


PURSUIT PAINT RIFLE



**MUST WEAR
FACE AND EYE
PROTECTION**

MODEL K

CAUTION: NOT A TOY. ADULT SUPERVISION REQUIRED. MISUSE OR CARELESS USE MAY CAUSE SERIOUS INJURY (ESPECIALLY TO EYES) OR DEATH. MAY BE DANGEROUS UP TO 100 YARDS. (91 METRES).

Form 410 9/85

WARNING: When removing rifle from storage, or when handing to, or receiving from another person, ALWAYS check to be sure rifle is NOT loaded.

CAUTION: This manual contains essential instructions for safe charging, loading, use, and maintenance of your new Pursuit Marking Rifle. If you follow these instructions, you can be sure to enjoy a lifetime of its use. Use this rifle with respect for yourself and others. Never, under any circumstance, tamper with or alter the factory adjustments on the trigger, sear, safety, or any other part which may affect safe operation.

SAFETY PRECAUTIONS:

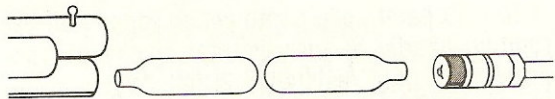
Keep in mind that previous careless handling might cause a marking pellet to remain in the barrel.

Never point your rifle, charged or uncharged, loaded or unloaded, with safety on or off, at or near anything you do not intend to mark.

Never lean your rifle against a car, fence or any other movable object that could cause the rifle to fall.

DO NOT STORE YOUR RIFLE LOADED.

Never allow others to use or inspect your rifle without first instructing them in the fundamentals of safe use. For everyone's protection, stress keeping the muzzle pointed in a safe direction at all times. Inform them of any other common sense rules of safety which the situation may require.



USING YOUR CO₂ RIFLE

CHARGING:

Unscrew the piercing cap and remove piercing cap assembly (see illustration). Place two (2) 12. Gram CO₂ bottles in the action tube as shown. BE CERTAIN CO₂ BOTTLE NECKS ARE OPPOSITE EACH OTHER AS DIAGRAM INDICATES. (Failure to install CO₂ bottles correctly will damage K-103 piercing washer and cause the rifle to malfunction.) Make sure the pressure release valve screw (Part #K312) is closed. (Hand tighten in clockwise direction.)

Replace piercing cap assembly. This will pierce the #1 CO₂ bottle. (see above illustration)

With rifle unloaded and pointed in a safe direction, cock the action, close bolt and pull

the trigger. The rifle should now be fully charged. If not, repeat until the rifle is expelling CO₂. This may be necessary because of slight variations in the manufacture of some CO₂ cartridges.

NOTE

WE RECOMMEND USING SHERIDAN 12 GRAM CO₂ CARTRIDGES. BECAUSE OF FORM DIFFERENCE IN SOME MAKES OF CO₂ CARTRIDGES, YOU WILL ONLY GET TOP PERFORMANCE AND MAXIMUM EFFICIENCY WHEN USING SHERIDAN CO₂ CARTRIDGES.

COCKING:

Open bolt and draw back slightly until it stops against the mainspring. Pull back hard and fast against the spring until sear engages with a 'click' and bolt stays back. BE SURE TO PUT RIFLE ON SAFE IMMEDIATELY THEREAFTER.

OPERATION OF SAFETY:

To put rifle on SAFE you must FIRST cock the action. (Safety will not operate unless action is cocked. The safety could be damaged if pressure is applied to safety button before action is cocked.)

SECOND: Push down hard on left thumb button marked "S". To release safety push down on the right thumb button marked "F". Always put safety solidly on "S" until you are ready to shoot.

LOADING:

Remove rear magazine plug, Part #P901, and fill magazine with .68 Cal. PMI Paint Pellets. Magazine holds 26 paint pellets. Replace rear magazine plug.

To load paint pellets into action, open bolt by rotating handle $\frac{1}{2}$ turn counter clockwise and draw back until resistance is felt. With gun in upright position, pull back hard and fast until sear engages with a 'click' and bolt stays back.

Rotate gun to left side to allow a paint pellet to roll into action. Close and lock bolt by turning handle clockwise until resistance is felt. Marking pellet is now in firing position. Be sure bolt is closed and locked before firing.

FIRING:

Put safety in "FIRE" position. Push button marked "F" with thumb. Sight in target, aim and pull trigger. CAUTION! Never point your paint rifle charged or uncharged, loaded or unloaded, with safety on or off, at or near anything you do not intend to mark with paint.

RELEASING THE CO₂ CHARGE:

When the CO₂ cartridges are almost exhausted, velocity and power will decrease noticeably. When removing CO₂ cartridges always open the CO₂ pressure release screw (Part #K312) by turning counter clockwise. This will release any residual CO₂ gas. Remove piercing cap assembly. Remove empty CO₂ cartridges. Turn CO₂ pressure release screw clockwise, insert new CO₂ cartridges.

WARNING: The following could also cause a paint pellet to remain in the barrel after loading and pulling the trigger:

1. No CO₂ cartridge in the action tube, or an empty CO₂ cartridge in the action tube.
2. Using deformed paint pellets.
3. Wrong size pellet. USE ONLY PMI .68 Cal.

4. Foreign matter obstructing the bore.
5. Dented barrel.

AMMUNITION:

.68 Caliber water-soluble paint pellets are available from:

Pursuit Marketing, Inc.
11814 S. Bell
Chicago, IL 60643
(312) 779-6189

MAINTENANCE

GENERAL CARE:

Barrel and action tube are made of a rustproof, non-ferrous alloy which requires no special treatment. Other external metal surfaces should be wiped with a lightly oiled cloth after each use. Sheridan CO₂ cartridges contain oil which lubricates internal parts; no additional lubrication is necessary.

4

STORAGE:

Although your Pursuit Paint CO₂ Rifle will hold its charge indefinitely, for maximum safety it should always be stored uncharged, uncocked, and unloaded. Store in a clean, dry place and well out of the reach of children.

SERVICE:

Your Pursuit CO₂ Paint Rifle should be inspected periodically for any changes in functioning characteristics. Particularly changes in trigger pull force or trigger travel which are indicative of possible wear. Also, if your rifle is ever dropped or otherwise subjected to severe impact, it should be carefully inspected to ensure that its proper functioning has not been affected.

Any repairs should be performed only by qualified factory personnel. If your Pursuit CO₂ Paint Rifle is in need of service, package it

carefully and insure for full value. Enclose a note describing desired service and send to Service Department.

An estimate of repair costs will be furnished on request. NOTE: Pursuit Rifles do not come under the provisions of the 1968 Gun Control Act and can be shipped via UPS or Parcel Post.

WARNING: Any attempted modification or service or other tampering by the owner or any other person may cause the rifle to malfunction and may render it unsafe. Any repairs should be made only by qualified factory personnel. For information on use and service, please write Pursuit Marketing, Inc., 11814 S. Bell, Chicago, IL 60643, 312 779-6189.

STATEMENT OF LIABILITY:

This rifle is delivered by us with the express understanding that we assume no liability for its resale or safe-handling. It can be considered as a dangerous weapon if mishandled, abused, instructions are ignored, or factory adjustments tampered with. Pursuit assumes no responsibility for physical injury or property damage resulting from its use. We will honor no claims for damage to the rifle resulting from careless handling, unauthorized adjustments, ignoring of instructions, improper ammunition, neglect, or resulting from any part or parts being altered or tampered with.

LIMITED WARRANTY:

Sheridan Products, manufacturer of Pursuit Paint Rifles warrants to the original consumer-purchaser that such rifles are free from defects

in material and workmanship for a period of 90 days from date of purchase. Any and all implied warranties arising under and by virtue of state law shall similarly be limited to 90 days from date of purchase. Some states do not allow limitation on how long an implied warranty lasts, so the above limitations may not apply to you.

Sheridan will repair or replace, without charge, to the original purchaser-consumer, any of its rifles that fail through defect in material or workmanship during the warranty period. The defective rifle must be returned, postage or shipping prepaid, to:

SHERIDAN PRODUCTS

3205 Sheridan Road

Racine, WI 53403

(414) 633-5424

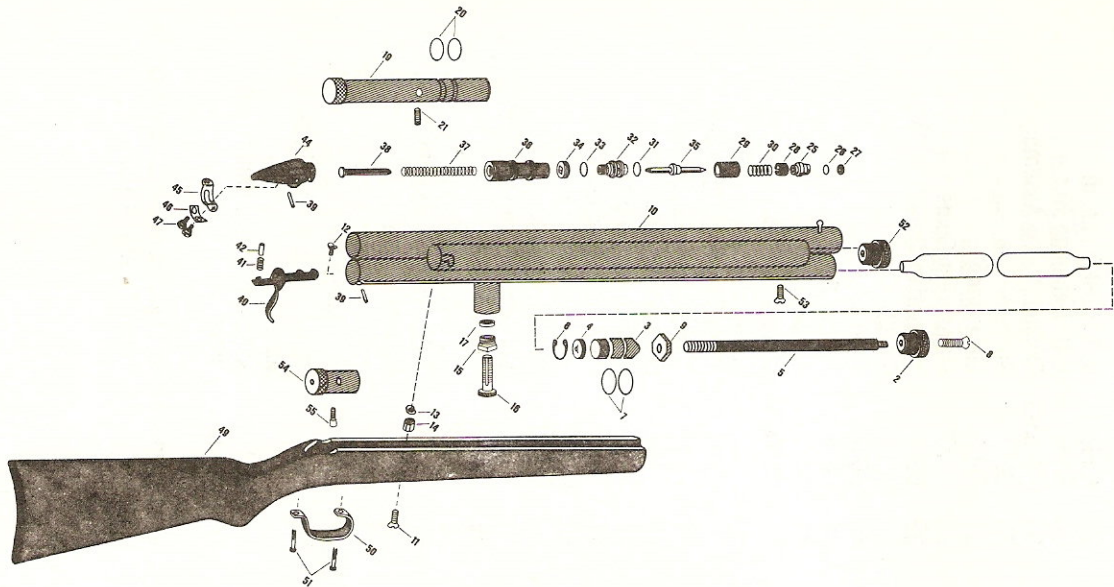
MODEL K PARTS LIST

REF. NO.	PART NO.	PART NAME
	KX101-1	Piercing Cap Assembly (Consists of the following)
2		K101 Piercing Cap
3		K102 Piercing Plug
4		K103 Piercing Washer
5		K104 Piercing Rod
6		K105 Piercing Washer
		Retaining Ring
7		K106 Piercing Plug Seal (2)
8		K107 Piercing Cap Screw
9		K108 Piercing Rod Jam Nut
10	KX203-2	Tube Assembly
11	C302	Fwd. Receiver Screw
12	F304	Action Fastener Screw
13	C305	Action Fastener Washer
14	C306	Action Fastener Nut
15	K311	P-R Valve Ret. Nut
16	K312	P-R Valve Screw
17	3435	Intake Valve Assembly
	KX401-1	Bolt Assembly
		(Consists of the following)
19		KX401 Bolt Sub-Assembly
20		K401 Breech Seal (2)
21		P404 Bolt Locking Lug
	KX500	Chamber Plug Sub-Assembly (Consists of the following)
25		K500 Chamber Plug
26		K500-0 Chamber Plug Seal
27		F504 Chamber Plug Face
28	F500-1	Chamber Plug Sleeve
29	F502-1	Chamber Sleeve
30	F503	Exhaust Valve Spring
31	F506	Valve Guide O'Ring
32	C507	Valve Guide

33	C506-1	V.G. Gasket (Lead)
34	C508	V.G. Retaining Nut
35	FX505-3	Exhaust Valve Assembly
36	C601	Striker
37	F602	Mainspring
38	C603	Mainspring Guide Pin
39	C605	Mainspring Retaining Cap Pin (2)
40	*C614	Trigger
41	C616	Trigger Spring
42	C617	Trigger Stop
	CX600	Mainspring Retaining Cap Sub-Assy
44		(Consists of the following)
45		C604 M.S. Retaining Cap
46		C611 Safety Slide
47		C612 Safety Washer
48	K700	C613 Safety Screw (2)
∞		Front Sight/Screw
	☆ FX800	Stock Assembly
49		(Consists of the following)
50		F800 Stock
51		C807 Trigger Guard
52	P901	C808 Trigger Guard Rivet (2)
53	P902	Front Magazine Plug
54	P905	Front Magazine Plug Screw
55	P907	Rear Magazine Plug
		Rear Magazine Plug Locking Screw
	AC4	Disassembly/Assembly Tool

*Must be factory fitted.

All parts and prices subject to change without notice.
Minimum Order - \$10.00



This Card Must be Returned Postpaid To Factory With Complete Information Required Under 90 Day Warranty.

Dealer's Name _____

Dealer's Address _____

Model _____ Cost _____ Date Purchased _____
Or Received

Serial No. _____

NAME _____

Address _____

Age _____