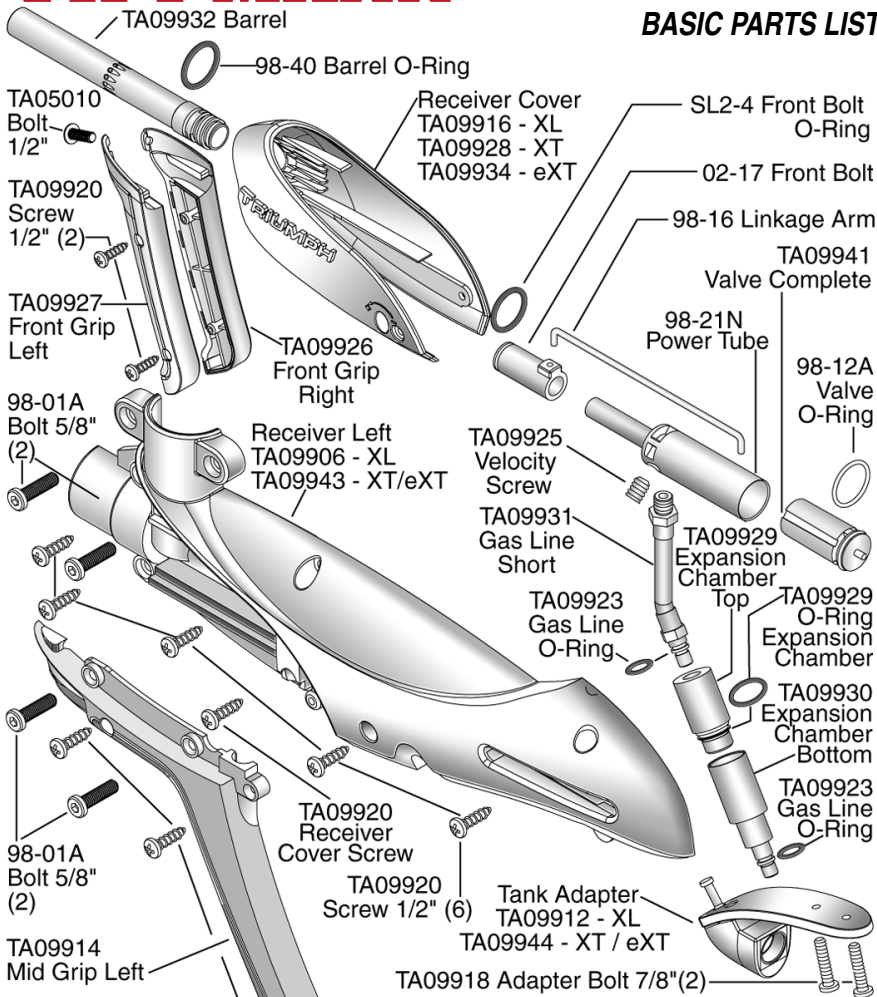


# TIPPMANN®

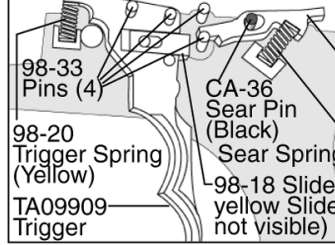
# TRIUMPH eXT BY TIPPMANN

## BASIC PARTS LIST



**Valve Disassembly Not Recommended**  
**INTERNAL VALVE PARTS:**  
 98-25N Valve Body  
 SL2-25 Valve Seat O-Ring (2)  
 PA-31A Valve Snap Ring  
 98-56 Valve Plug  
 98-32 Valve Spring  
 TA09940 Valve Plunger  
 CA-27 Front Valve Seat

### TRIGGER ASSEMBLY



- 1) Place 4 dowel pins and 1 black sear pin into locations as shown.
- 2) Then place the trigger and sear onto pins as shown.
- 3) Insert sear spring (black or blue) as shown.
- 4) Insert trigger spring (yellow) as shown.

## WARNING

DO NOT DISASSEMBLE THIS MARKER WHILE IT IS PRESSURIZED WITH AIR. DO NOT PRESSURIZE A PARTIALLY ASSEMBLED MARKER.

# TRIUMPH BY TIPPMANN

