



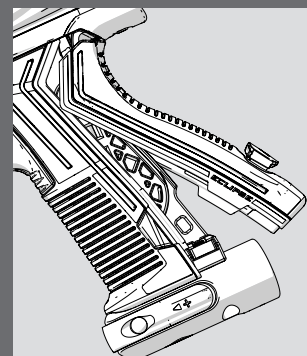
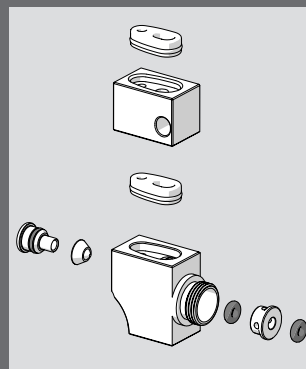
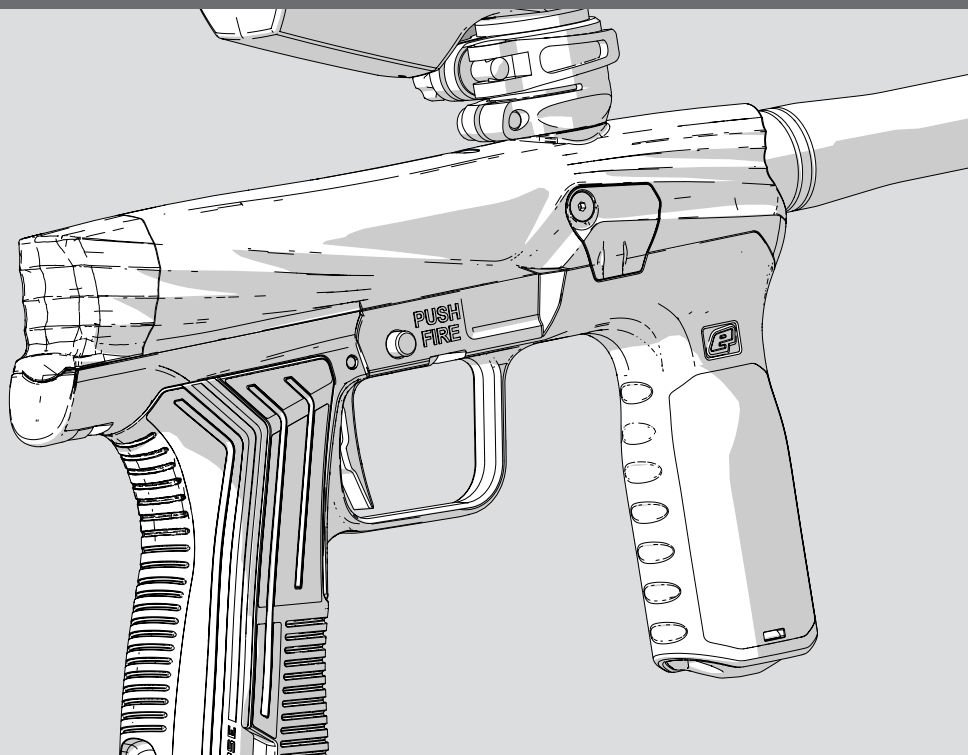
PLANET ECLIPSE: ETHA3M

USER MANUAL: ENGLISH

ETHA3M

.68CAL

ATOM CORE





WARNING!

IMPORTANT SAFETY NOTICES

- ⚠ **PLANET ECLIPSE PAINTBALL EQUIPMENT IS NOT A TOY. PAINTBALL SAFETY RULES MUST BE FOLLOWED AT ALL TIMES.**
- ⚠ Careless or improper use of the marker and/or parts, including failure to follow instructions and warnings within this User Manual could cause serious injury or even death.
- ⚠ Do not remove or deface any warnings attached to the marker.
- ⚠ Paintball industry standard eye/face/ear and head protection designed specifically to stop paintballs and meeting ASTM standard F1776 (USA) or CE standard (Europe) must be worn by the user and any person within range. Proper protection must be worn during assembly, cleaning and maintenance.
- ⚠ Hearing protection should be worn.
- ⚠ Never shoot at a person who is not wearing proper protection.
- ⚠ Never look directly into the barrel of the marker. Accidental discharge into the eyes may cause permanent injury or even death. Never look into the barrel or breech area of the marker whilst the marker is switched on and able to fire.
- ⚠ Keep the marker switched off until ready to shoot.
- ⚠ Treat every marker as if it is loaded and ready to fire.
- ⚠ The electronic On/Off button or mechanical Safety switch is the marker's disabling device. Always switch the marker off when not in use.
- ⚠ Always fit a barrel-blocking device to the marker when not in use.
- ⚠ Always remove paintballs from the marker when not in use.
- ⚠ Do not field strip or remove any parts while the marker is pressurised.
- ⚠ Do not pressurise the marker without all the components of the marker correctly installed, as high-pressure gas may be emitted.
- ⚠ Do not fire the marker without the bolt correctly installed.
- ⚠ Never put your finger or any foreign objects into the paintball feed tube of the marker.
- ⚠ Never allow pressurised gas to come into contact with any part of your body.
- ⚠ Always remove the first stage regulator and relieve all residual gas pressure from the marker before disassembly.
- ⚠ Always remove the first stage regulator and relieve all residual gas pressure from the marker for transport and storage.
- ⚠ Always follow guidelines given with your first stage regulator for safe transportation and storage.
- ⚠ Always store the marker in a secure place.
- ⚠ Observe all local and national laws, regulations and guidelines.
- ⚠ Persons under 18 years of age must have adult supervision when using or handling the marker.

WARNING!

IMPORTANT SAFETY NOTICES



- ⚠ Only use professional paintball fields where codes of safety are strictly enforced.
- ⚠ Use compressed air/nitrogen only. Do not use any other compressed gas or pressurised liquid including CO2.
- ⚠ Always follow instructions, warnings and guidelines given with any first stage regulator you use with the marker.
- ⚠ Use 0.68 inch calibre paintballs only.
- ⚠ Always measure your marker's velocity before playing paintball, using a suitable chronograph.
- ⚠ Never shoot at velocities in excess of 300 feet (91.44 metres) per second, or at velocities greater than local or national laws allow.
- ⚠ Any installations, modifications or repairs should be carried out by a qualified individual at a licensed and insured paintball facility.

WARNING !

This user manual must accompany the product in the event of resale or new ownership. Should you be unsure at any stage you must seek expert advice.



This User Manual is in English.

It contains important safety guidelines and instructions. Should you be unsure at any stage, or unable to understand the contents of this manual you must seek expert advice.



Le mode d'emploi est en Anglais.

Il contient des instructions et mesures de sécurité importantes. En cas de doute, ou s'il vous est impossible de comprendre le contenu du mode d'emploi, demandez conseil à un expert.



Este manual de usuarios (operarios)

Usuarios está en Inglés. Contiene importantes normas de seguridad e instrucciones. Si no está seguro de algún punto o no entiende los contenidos de este manual debe consultar con un experto.



Diese Bedienungs - und Benutzeranleitung ist in Englisch.

Sie enthält wichtige Sicherheitsrichtlinien und -bestimmungen. Sollten Sie sich in irgendeiner Weise unsicher sein, oder den Inhalte dieses Heftes nicht verstehen, lassen Sie sich bitte von einem Experten beraten.

CONTENTS

LET'S GET THIS PARTY STARTED

05	Welcome To Planet Eclipse	18	Parts List
06	Setting Up	20	Inline Regulator
08	Push Button-Safety	21	FL 3-Way Valve
09	Push Button-Fire	22	Bolt Assembly-68cal
10	Velocity Adjustment	23	Frame Assembly
11	Detents/Breech Cover	24	Clamping Feed Neck Assembly
12	Unloading The Marker	25	Push On Purge System (POPS) Assembly
14	Storage And Transportation	26	Two-Piece Grips
15	We Got Your Back	27	Glossary Of Terms
16	Fault Finding Tables		

OUR PROMISE

WELCOME TO PLANET ECLIPSE

05



SUPPORT

As an Eclipse customer you will have access to our worldwide technical support network that will help you with any technical problems from localised service centres to on-site* tech support.



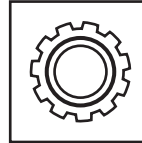
QUALITY

All Eclipse products undergo meticulous checks by experienced specialists who care about the product that arrives at your door. Precision materials + high standards = a quality product.



WARRANTY

Our exceptional 12 month* manufacturer's warranty backed by our online warranty system offers peace of mind and ensures your claim will be repaired or replaced in a snap!



STANDARD

Your Eclipse marker is awesome and requires no after market parts however, for genuine Eclipse accessories and support please consult your local Eclipse Dealer for upgrade options.

* Conditions apply, see online policies for full details at planetecclipse.com

QUICK START

SETTING UP

FIG.1

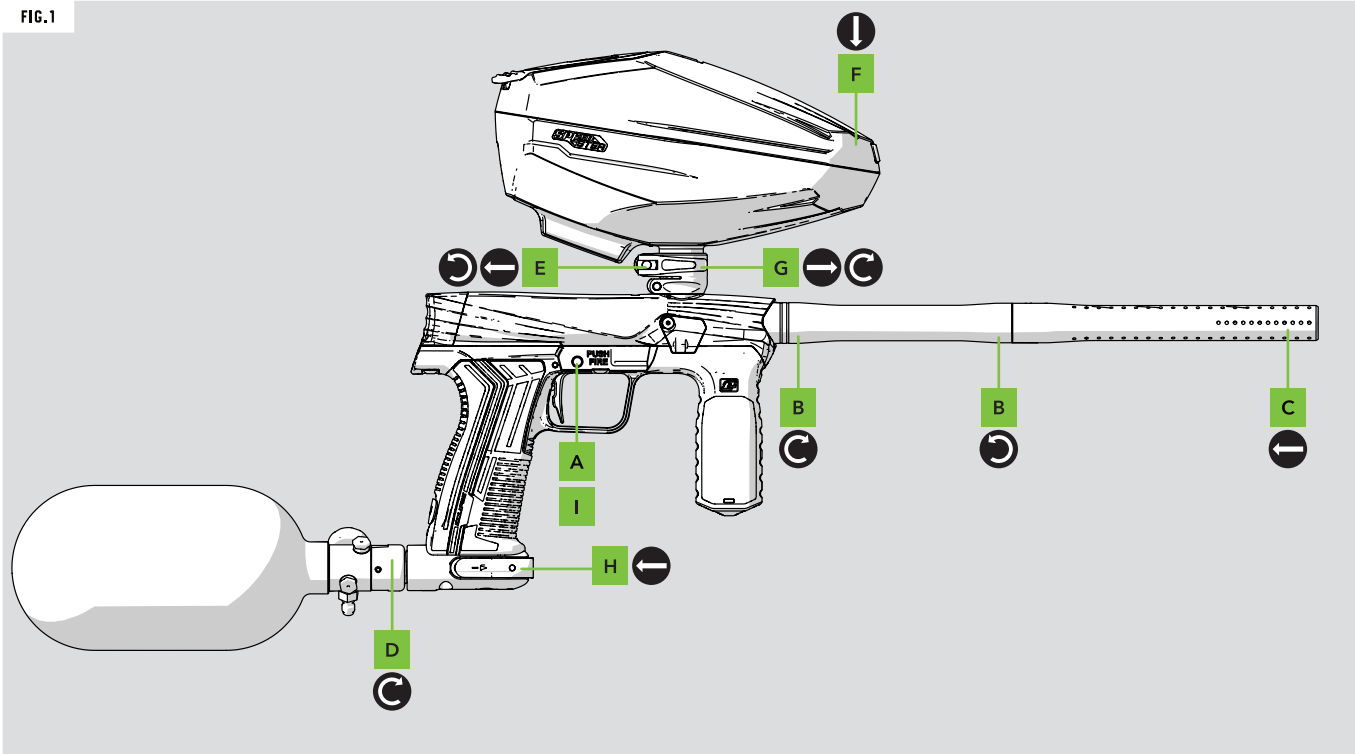


FIG.1

- A** **PUSH SAFE before you begin.**
This ensures the marker will not fire when the trigger is pulled.
- B** **Attach the barrel.**
Rotate the barrel tip counter-clockwise into the back section.
Rotate the barrel back clockwise into the marker body.
- C** **Attach a barrel blocking device for safety.**
- D** **Attach the preset air system.**
Rotate the air system clockwise into the ASA body.
- E** **Loosen the clamping feed neck.**
Open the feed neck lever away from the feed neck.
Rotate the feed neck lever screw counter-clockwise.
- F** **Attach the loader.**
Loosen the clamping feed neck if it's too tight.
- G** **Secure the loader.**
Close the feed neck lever to secure.
Rotate the feed neck lever screw clockwise to tighten.
- H** **Gas the marker.**
Push the POPS switch towards the POPS body until it engages.
- I** **PUSH FIRE when you are ready to play.**
The marker will now fire when the trigger is pulled.



- IMPORTANT!** To operate Safety Button see pages 8-9.
- DO NOT** over-tighten the barrel.
- ALWAYS** ensure marker is de-gassed when setting up.
- NEVER** use CO2. Only use compressed air or Nitrogen.

WARNING !

Always make sure that the marker is set to PUSH SAFE with a barrel blocking device installed and that no paintballs are in the marker or loader before attaching an air system.

Compressed air and nitrogen systems can be extremely dangerous if handled or used incorrectly.

Only attach an air system certified for use within the country of use.

Never add lubricants or grease into the fill adaptor of the air system regulator.

Ensure that all screws are tightened and no parts are loose before installing an air system.

Do not pressurise the marker without the bolt system correctly installed, as high pressure gas will be emitted.

Do not install a compressed air system or load paintballs into the marker until you feel confident with your ability to handle the marker safely and responsibly.

QUICK START

PUSH BUTTON-SAFETY

FIG.1

The safety button **A** is located on the frame and is used to switch between safe (PUSH SAFE) and fire (PUSH FIRE).

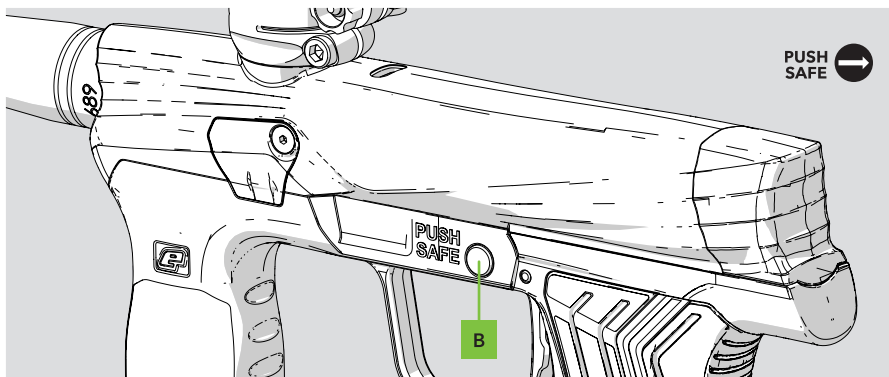
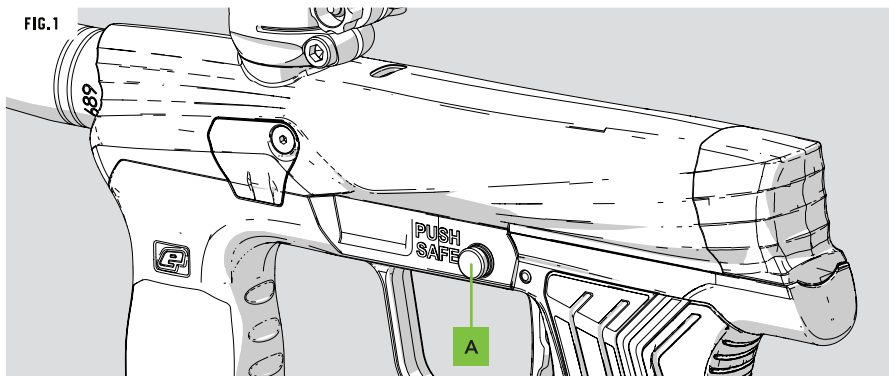
PUSH SAFE

Push the safety button **A** in from the left side of the frame to make the marker safe. Once the safety button is pushed in from the left side **B** the trigger will be locked and the marker will not fire.

FIRING THE MARKER

When set to PUSH SAFE the marker is live but will not fire.

FIG.1



WARNING!

If the safety button does not work contact your local Eclipse Dealer immediately and do not use the marker.

When PUSH SAFE is enabled the marker is still a live marker until the air system has been fully removed.

QUICK START

PUSH BUTTON-FIRE

09

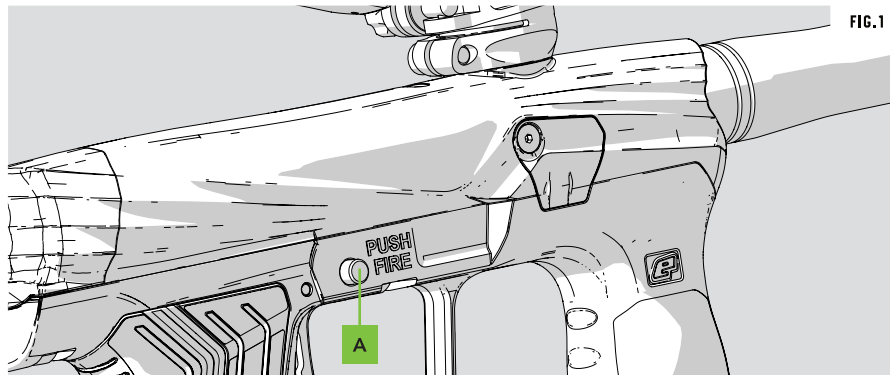


FIG.1

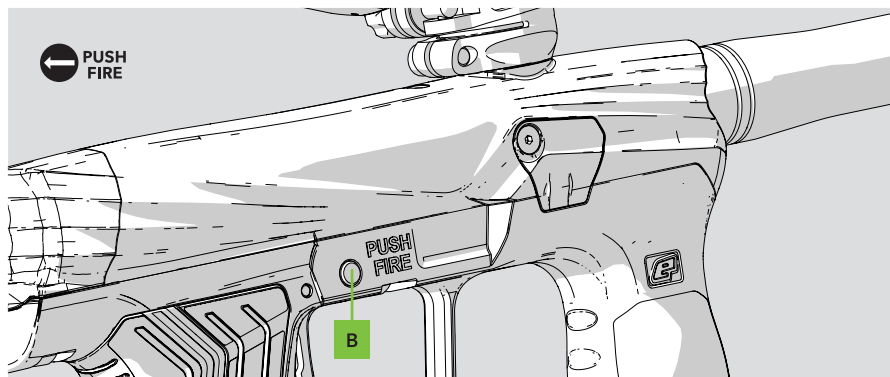
The safety button **A** is located on the frame and is used to switch between safe (PUSH SAFE) and fire (PUSH FIRE).

PUSH FIRE

Push the safety button **A** in from the right side of the frame. Once the safety button is pushed in from the right side **B** the marker will be live and ready to fire.

FIRING THE MARKER

When set to PUSH FIRE the marker is live and will fire when the trigger is pulled.



WARNING!

If the safety button does not work contact your local Eclipse Dealer immediately and do not use the marker.

When PUSH FIRE is enabled the marker is live and will fire with every pull of the trigger, if an air system is fitted.

QUICK START

VELOCITY ADJUSTMENT

FIG.1

Insert a 1/8" hex key **A** into the velocity adjuster screw **B** to alter the velocity of the marker.

ADJUSTING THE VELOCITY

- A** Turn the hex key clockwise to reduce velocity.
- B** Turn the hex key counter-clockwise to increase velocity.
- !** Fire two clearing shots after each velocity adjustment for an accurate velocity reading.
- !** DO NOT turn the adjuster screw in too far. This will prevent the marker from firing.

WARNING!

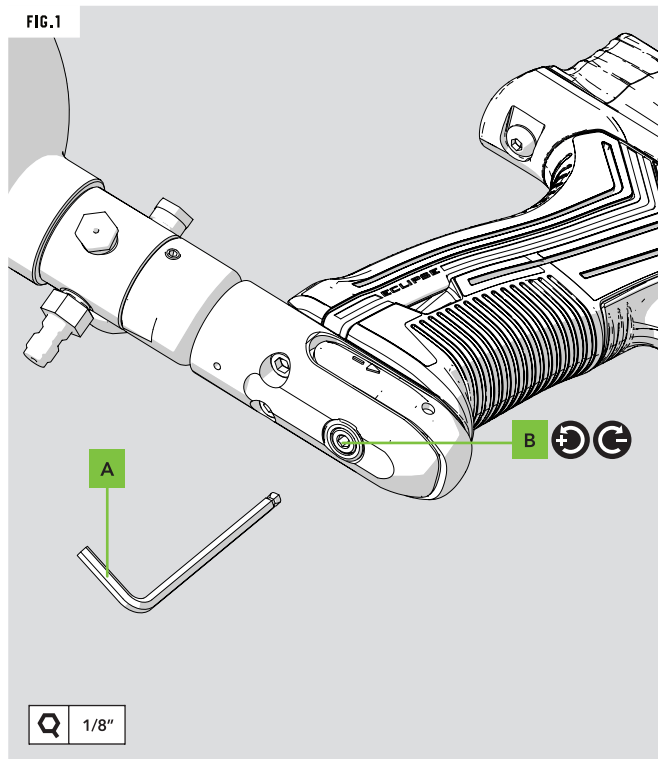
DO NOT exceed 300FPS.

ALWAYS wear correct protective equipment when firing your marker.

NEVER point your marker in the direction of other people when not on the field.

ALWAYS be aware of where the barrel is facing when adjusting the velocity.

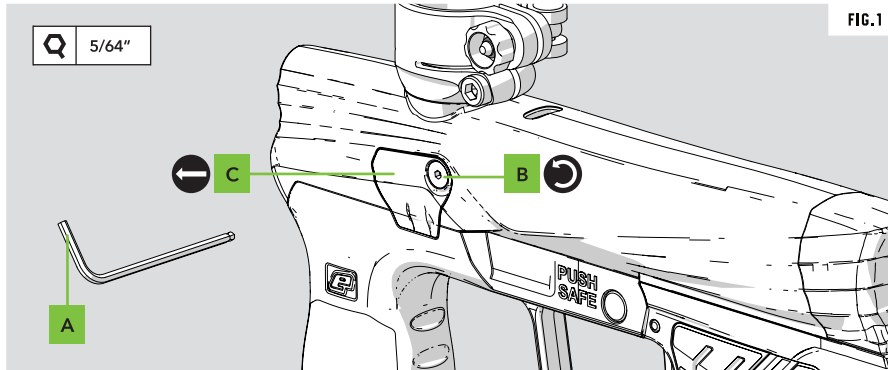
FIG.1



QUICK START

DETTENTS/BREECH COVER

11



The rubber ball detents hold the paintball in place until ready to fire. This prevents paintballs from rolling down the barrel and maintains feed consistency.

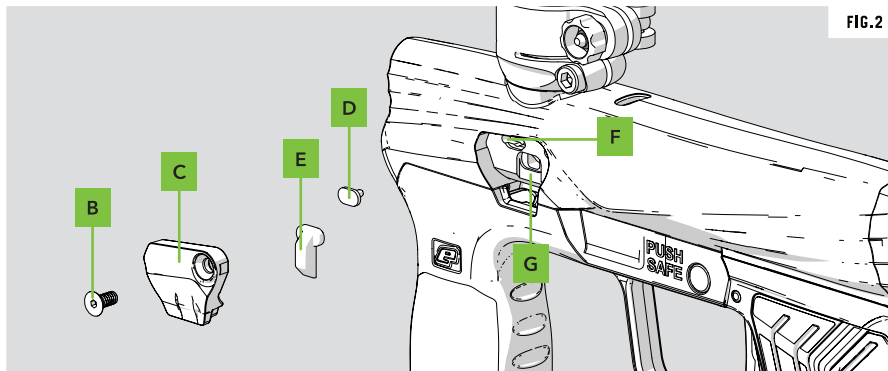
These can be easily removed for cleaning and/or replacement.

FIG. 1 (ACCESS)

Use a 5/64" hex key **A** to remove the breech cover screw **B** by rotating counter-clockwise. Then release the breech cover **C**.

FIG. 2 (DETAILS)

The important features shown apply to both sides of the marker.

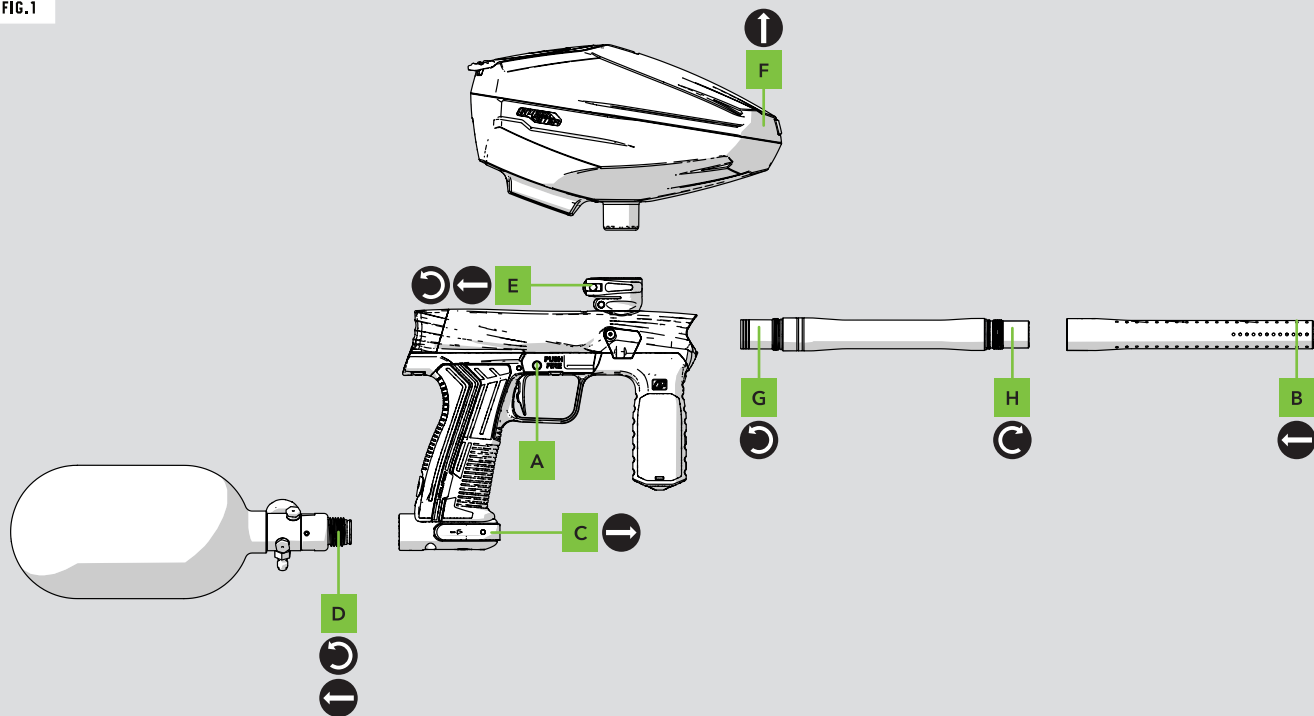


- A** 5/64" Hex Key (see FIG. 1)
- B** Breech Cover Screw
6-32UNC x 5/16
Countersunk socket screws
- C** Breech Cover
- D** Rubber Detent
- E** Rubber Breech Plug
- F** Detent Recess
- G** Breech Plug Recess

QUICK START

UNLOADING THE MARKER

FIG.1



QUICK START

UNLOADING THE MARKER

13

FIG.1

- A PUSH SAFE before you begin.**
This ensures the marker will not fire when the trigger is pulled.
- B Attach a barrel blocking device for safety.**
- C De-gas the marker.**
Push and hold the POPS button then pull the POPS switch away from the POPS body.
- D Remove the preset air system.**
Rotate the air system counter-clockwise from the ASA body.
- E Loosen the clamping feed neck.**
Open the feed neck lever away from the feed neck.
Rotate the feed neck lever screw counter-clockwise.
- F Remove the loader.**
If the feed neck is too tight, loosen the clamping feed neck more.
- G Remove the barrel.**
Rotate the barrel counter-clockwise from the marker body.
- H Separate the barrel sections.**
Rotate the barrel tip clockwise from the barrel back.

- IMPORTANT!** To operate Safety Button see pages 8-9.
- ALWAYS** attach a barrel blocking device to avoid injury.
- ALWAYS** remove air system before unloading.
- ALWAYS** remove any paintballs from the breech of the marker once the loader has been removed.

WARNING !

Always make sure that the marker is set to PUSH SAFE with a barrel blocking device installed and that no paintballs are in the marker or loader before attaching an air system.

Compressed air and nitrogen systems can be extremely dangerous if handled or used incorrectly.

Only attach an air system certified for use within the country of use.

Never add lubricants or grease into the fill adaptor of the air system regulator.

Ensure that all screws are tightened and no parts are loose before installing an air system.

Do not pressurise the marker without the bolt system correctly installed, as high pressure gas will be emitted.

Do not install a compressed air system or load paintballs into the marker until you feel confident with your ability to handle the marker safely and responsibly.

QUICK START

STORAGE AND TRANSPORTATION

- ! Your marker must be clear of all paint and propellant during transportation or storage.
- ! Make sure the safety switch is turned to Safe (PUSH SAFE).
- ! Remove the barrel from the marker.
- ! Make sure the marker is clean of any paint residue, dirt and moisture.
- ! Store your marker in a clean, cool, dry place.
- ! Keep your marker away from any unauthorised or unsafe users.
- ! Protect your marker from excessive heat during transportation.
- ! When transporting a paintball marker by air, check with the airline regarding their policies on transporting paintball equipment as hold luggage before arriving at the airport.
- ! Observe and obey all local and national laws concerning the transportation of paintball markers.
- ! Use the box in which the marker was originally supplied to protect the marker against rough handling during transport.

WARNING!

The non-playing public and law enforcement personnel may not be able to distinguish between a paintball marker and a real firearm. For your own safety, the safety of others and to protect the image of paintball, always carry the paintball marker in a suitable marker case, such as the one in which it was supplied.

MAINTENANCE

WE GOT YOUR BACK

15



TECH SUPPORT

SCAN TO ACCESS OUR LIVE TECH SUPPORT HUB.



TECH VIDEOS

SCAN TO WATCH IN-DEPTH TECHNICAL GUIDANCE VIDEOS.



WARRANTY REGISTRATION

SCAN TO CHECK WARRANTY SUPPORT ELIGIBILITY.

From our live tech services, instructional video guidance and ongoing warranty support you'll quickly discover that our reputation for industry-leading after-sales care goes way beyond anything you've experienced before.

So pat yourself on the back for making the right choice and welcome to the family.

#WEGOTYOURBACK

SYMPTOM	POSSIBLE CAUSE	SOLUTION
The marker leaks from the 3-way.	The gasket between the 3-way body and gun body, o-ring on air transfer pipe or the gasket under the 3-way plate are damaged or dirty.	Ensure the gasket is seated correctly. Replace the gaskets if damaged using the marker parts kit. Check condition of the air transfer pipe #010 NBR70 o-ring.
	3-way is over-pressurised.	Check the output pressure of the inline regulator and adjust accordingly. Clean and inspect the inline regulator assembly paying particular attention to the piston tip and regulator seal. Replace damaged components as necessary.
	Damaged or incorrect seals in the 3-way.	Rebuild and re-grease the 3-way.
The marker leaks down the barrel.	Dirty or damaged can o-rings.	Clean and lubricate or replace #020 NBR70 and #017 NBR o-rings on the front of the can.
	Dirty or damaged o-rings on the spool.	Clean and lubricate or replace the #011 NBR70 and #012 NBR70 o-rings on the main spool.
	Dirty or damaged bolt o-rings.	Clean and lubricate or replace 14 x 2 NBR70 o-ring on the back of the bolt.
	Dirty or damaged rear bolt guide o-ring.	Clean and lubricate or replace the 14 x 2 NBR70 o-ring towards the back of the bolt guide.
The marker is breaking paintballs in the barrel or breech.	The ball detents are damaged or missing.	Replace the ball detents.
	The force setting of the loader is too high.	Reduce the loader force feed setting.
	The paint is poor quality.	Try a higher grade of paint.
	The velocity is set too high.	Check and adjust the velocity of the marker.

MAINTENANCE

FAULT FINDING TABLES

17

SYMPTOM	POSSIBLE CAUSE	SOLUTION
The marker does not fire.	The air system is not fully engaged.	Screw in the air system until it fully engages.
	The 3-way is damaged.	Replace the 3-way.
Low constant velocity.	The inline regulator output pressure is set too low.	Increase the output pressure of the inline regulator.
High velocity first shot.	The inline regulator pressure is creeping.	Strip and clean the inline regulator replacing the regulator seal inside the regulator adjuster assembly.
Velocity drop-off during rapid fire.	Air system regulator does not have high enough flow.	Try another air system.
	Dirty/partially blocked inline regulator.	Strip, clean, lubricate and rebuild the inline regulator.
Two or more balls are being fed into the breech.	Worn, damaged or missing ball detents.	Change the rubber ball detents.
	The force setting of the loader is too high.	Adjust loader settings/use lower force loader.
Marker is inconsistent.	The inline regulator is dirty.	Strip and clean inline regulator, replace regulator seal.
	Poor quality paintballs.	Use better quality paintballs.
	Poor paintball size to barrel bore match.	Use a closer paintball to barrel bore size.
	Inconsistent air supply from air system.	Service the air system.
Marker is inefficient.	Poor paintball size to barrel bore match.	Use a closer paintball to barrel bore size.

FIG.1

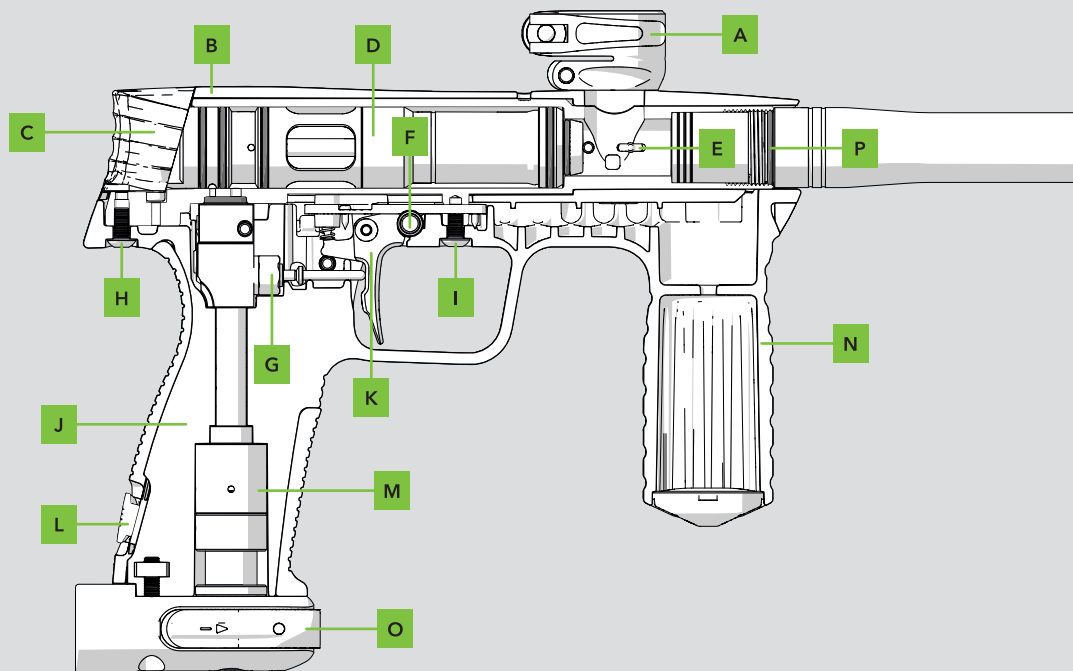


FIG.1

A	Clamping Feed Tube Assembly
B	Marker Body Shell
C	Quick-Release Back Cap
D	Bolt Assembly
E	Rubber Detent
F	Safety Button
G	FL 3-Way Valve Assembly
H	Rear Frame Screw

I	Front Frame Screw
J	Frame Assembly
K	Trigger Assembly
L	Grip Retaining Clip
M	Regulator Assembly
N	Foregrip
O	ASA Assembly
P	Barrel O-Ring #016 NBR70

FIG.1

- A Regulator Body
- B #015 NBR70 O-Rings
- C Adjuster Bottom
- D #011 NBR70 O-Ring
- E Purge Poppet Spring
- F Purge Poppet
- G Regulator Seal
- H Adjuster Top
- I #008 NBR70 Internal O-Ring
- J #011 NBR70 External O-Ring
- K Regulator Spring
- L Regulator Piston
- M 14x2 NBR70 O-Ring
- N Regulator Cap

FIG.1

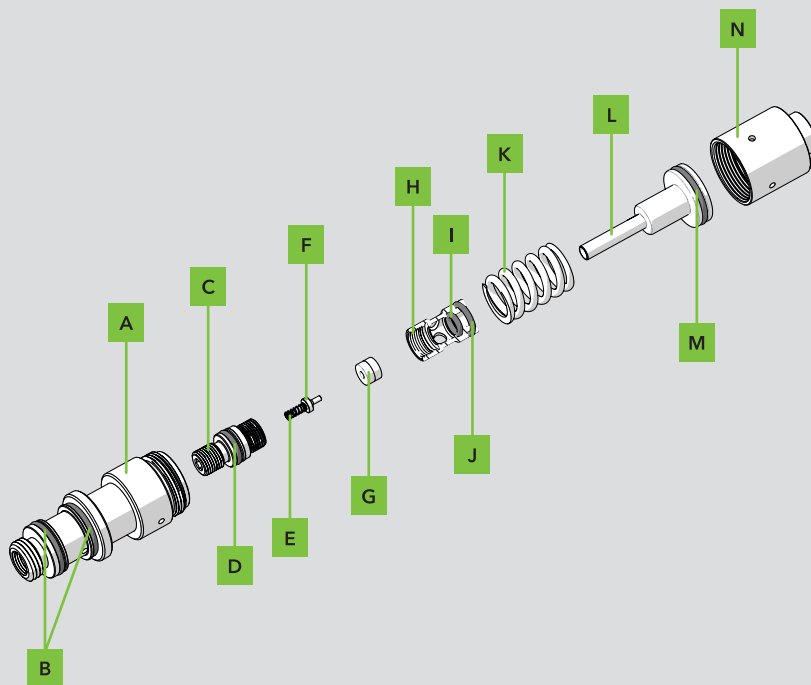
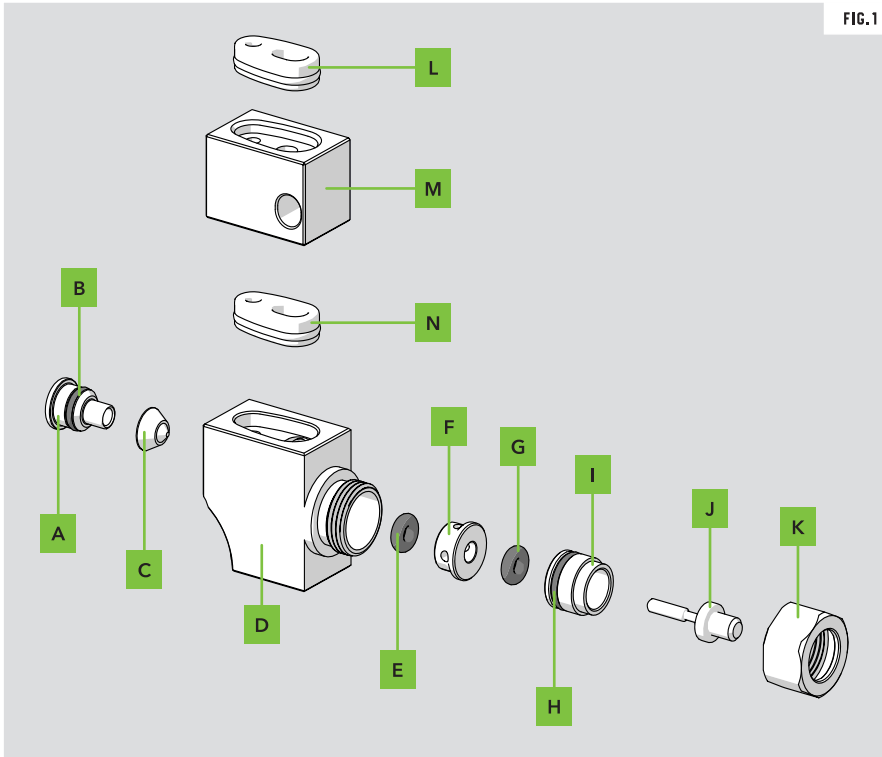


FIG.1

FIG.1

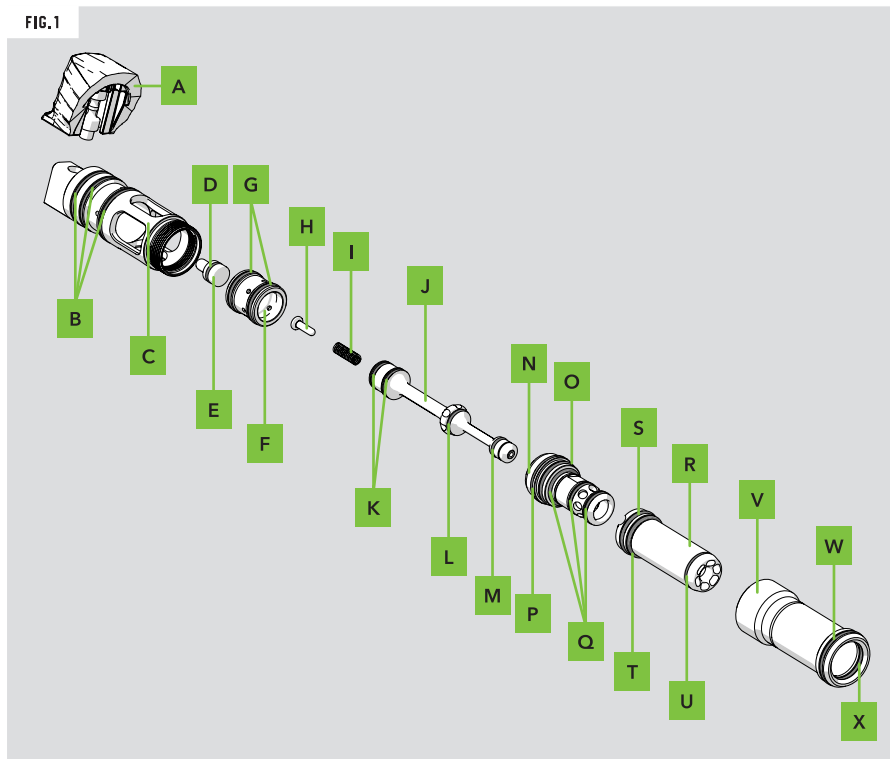


- A** QEV Cap
- B** 4x1 NBR70 O-Ring
- C** QEV Diaphragm
- D** FL 3-Way Body
- E** #004 NBR70 O-Ring
- F** FL 3-Way Spacer
- G** #004 NBR70 O-Ring
- H** 6x1 NBR70 O-Ring
- I** FL 3-Way Spool Guide
- J** FL 3-Way Spool
- K** FL 3-Way Cap
- L** Transfer Block Gasket
- M** Transfer Block
- N** FL 3-Way Body Gasket

FIG.1

- A** Quick Release Back Cap
- B** #020 NBR70 O-Ring
- C** Valve Chamber
- D** #010 NBR70
- E** Plunger
- F** Switch
- G** #016 NBR70 O-Ring
- H** Spring Guide
- I** Spool Spring
- J** Spool
- K** #012 NBR70 O-Ring
- L** #011 NBR70 O-Ring
- M** #008 NBR70 O-Ring
- N** Bolt Guide
- O** #014 NBR70 O-Ring
- P** 14 x 2 NBR70 O-Ring
- Q** #013 NBR70 O-Ring
- R** Bolt
- S** 14 x 2 NBR70 O-Ring
- T** #015 NBR90 O-Ring
- U** #013 NBR70 O-Ring
- V** Can
- W** #020 NBR70 External O-Ring
- X** #017 NBR70 Internal O-Ring

FIG.1



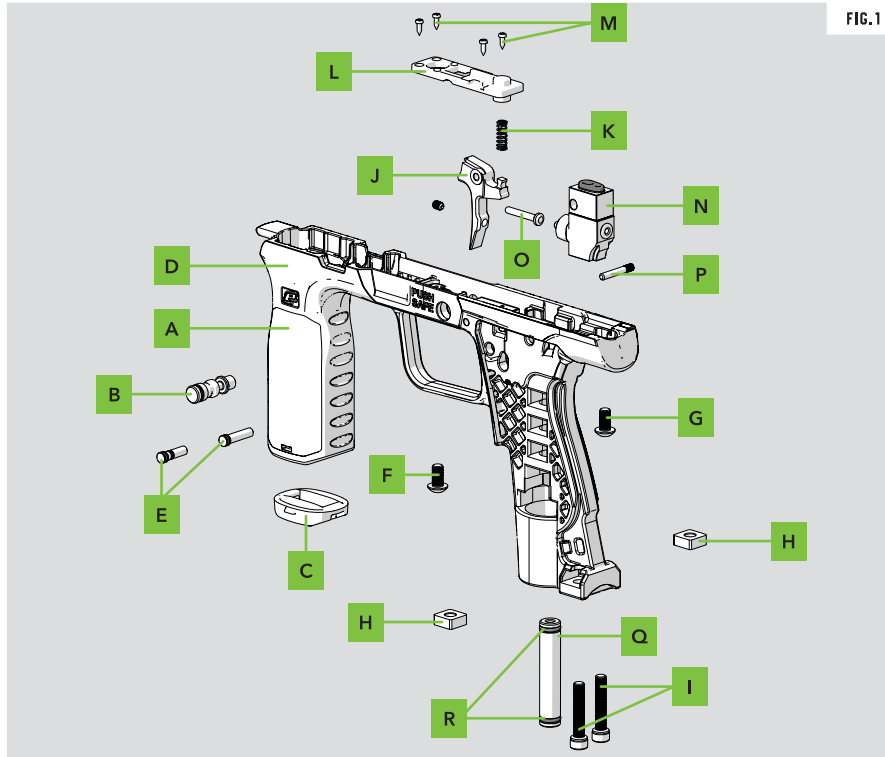


FIG.1

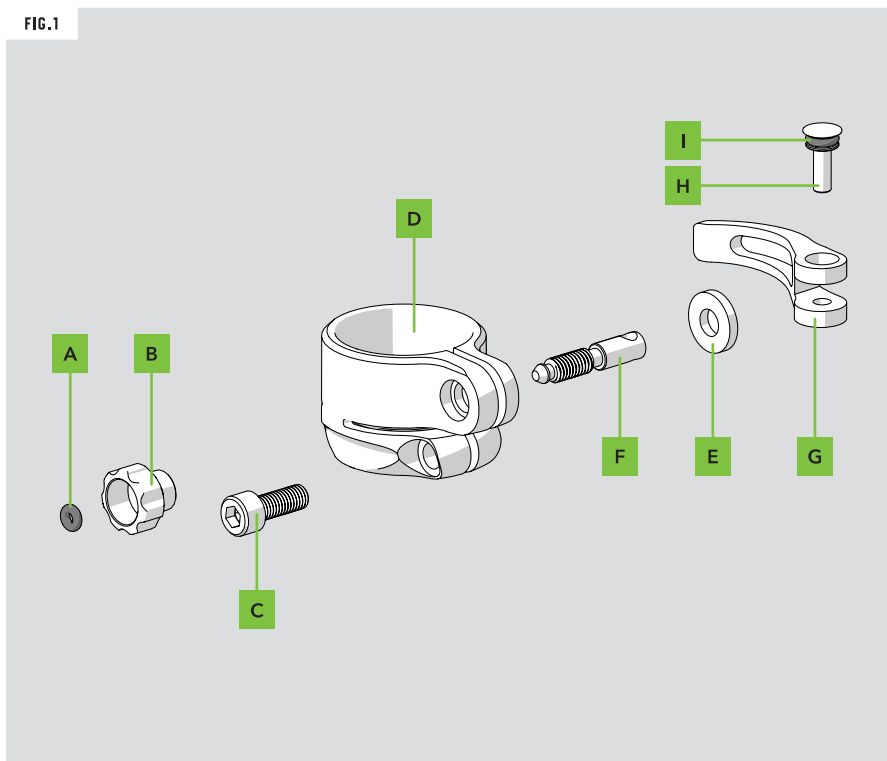
FIG.1

- A** Foregrip
- B** Safety Button
- C** Foregrip Cap
- D** Frame Assembly
- E** FL 3-Way Body Pins
+ 3 x 1 NBR70 O-Ring
- F** Front Frame Screw
- G** Rear Frame Screw
- H** ASA Retaining Nuts
- I** ASA Screws
10-32 UNF x 1" Cap Head Socket
- J** Trigger Assembly
- K** Trigger Spring
- L** Trigger Plate
- M** Trigger Plate Retaining Screws
- N** FL 3-Way Assembly
- O** FL 3-Way Push Pin
- P** Trigger Pin
- Q** Regulator Inlet Pipe
- R** #10 NBR70 O-Ring

FIG.1

- A** Clamping Feed Nut O-Ring
#004 NBR70
- B** Clamping Feed Nut
- C** Short Clamping Feed Screw
10-32 UNF x 1/2"
- D** Feed Tube
- E** Feed Insert
- F** Machined Clamping Feed Screw
- G** Feed Lever
- H** Feed Swivel
- I** Feed Swivel O-Ring
#006 NBR70

FIG.1



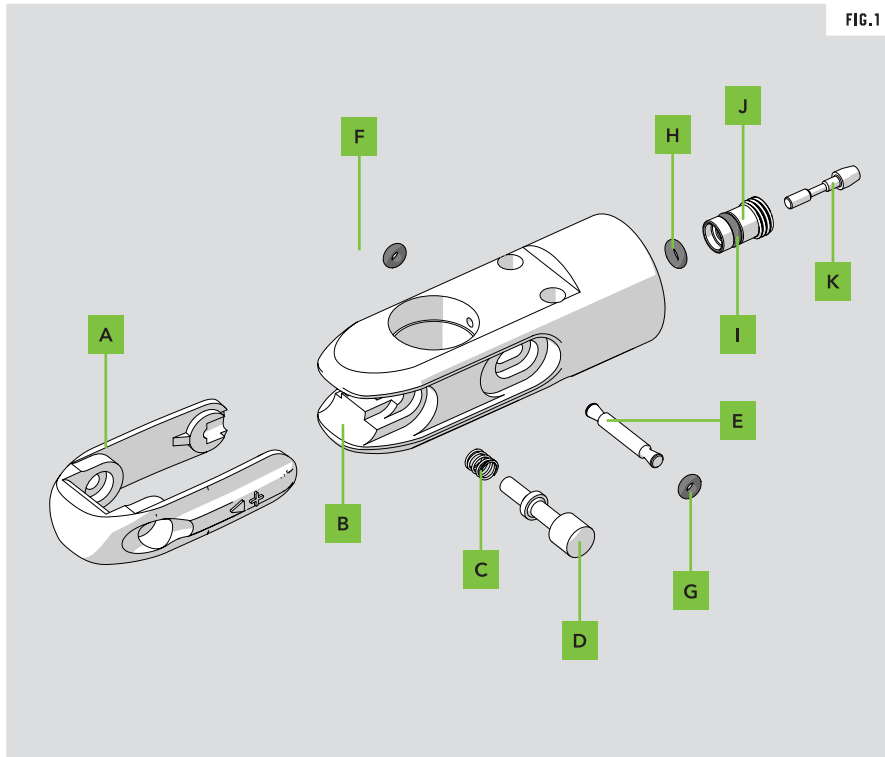


FIG.1

FIG.1

- A** POPS Bonnet
- B** POPS Body
- C** Latch Spring
- D** Latch Button
- E** Push Rod
- F** #004 NBR70
- G** #004 NBR70
- H** #005 NBR90 (Internal O-Ring)
- I** #007 NBR70 (External O-Ring)
- J** POPS Insert
- K** POPS Pin

The tool-less two-piece grip system makes it incredibly easy to remove and clean the grips after a big day out in the field.

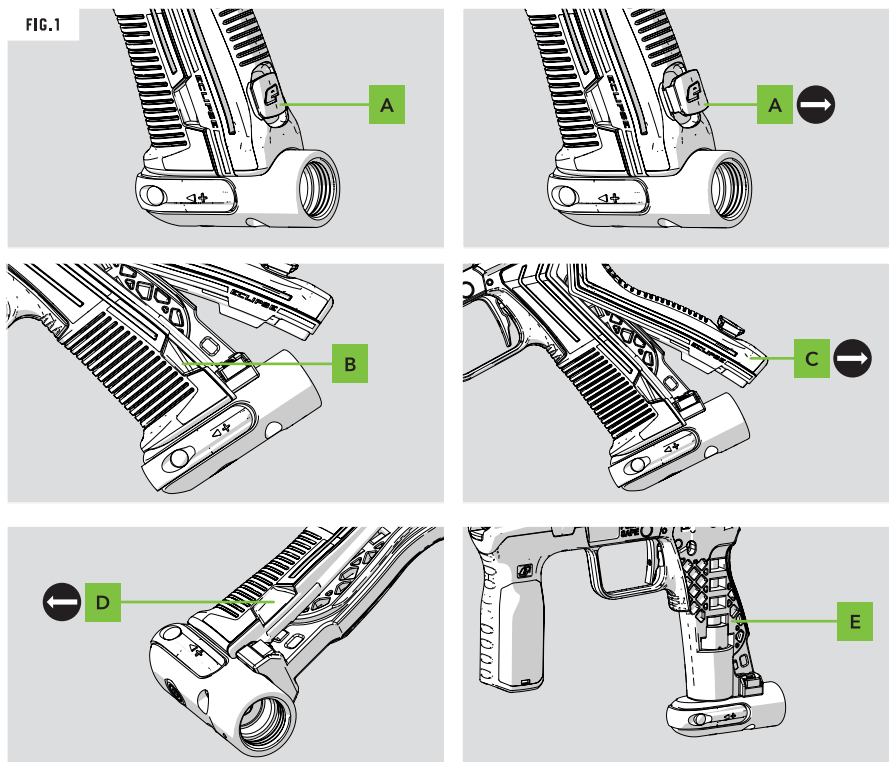
FIG-1

- A** Locate and pull back the rear grip locking tab.
- B** Use the finger recess to help leverage and release the rear grip section.
- C** Once released, pull to fully remove the rear grip section from the frame.
- D** The front grip section can now be released and removed.
- E** You can now easily access the frame and separate grip pieces for thorough cleaning.

Repeat the steps in reverse order to reattach the grips to the frame.

WARNING!

When cleaning the frame, there are exposed operational elements that may be affected if wet.

FIG.1

3-Way	16-17, 19, 21, 23
Back Cap	19, 22
Bolt Assembly	19, 22
Can	16, 22
Detent	11, 16-17, 19
Feed Lever	24
Feed Neck	07, 13, 24
Foregrip	19, 23
Frame	08-09, 19, 23, 26
Frame Screw	19, 23
Grip	19, 23, 26
O-Ring	16, 19-25

POPS	07, 13, 25
Regulator	07, 13, 16-17, 19-20
Regulator Piston	20
Regulator Spring	20
Safety Button	07-09, 13, 19
Spool	16, 21-22
Tech Support	05, 15
Trigger	07-09, 13, 19, 23
Trigger Spring	23
Velocity	10, 16-17
Warnings	02-03, 07-10, 13-14, 26



GET MORE
PLANETECLIPSE.COM



GET
MORE

SCAN TO ACCESS
EVERYTHING THAT
IS PLANET ECLIPSE.



802.082.A-000

THIS PRODUCT IS COVERED BY AND/OR LICENSED UNDER ONE OR MORE OF THE FOLLOWING PATENTS:

G.B. PATENTS:

2,342,710; 2,345,953; 2,352,022; 2,391,292; 2,391,063;

U.S. PATENTS:

7,836,873; 7,603,995; 7,073,284; 8,104,463; 7,509,953; 7,921,839; 7,089,697; 7,866,307; 8,082,912; 7,076,906; 7,607,424; 7,980,238; 8,960,175; 8,528,877; 8,201,547; 8,397,706; 8,210,160; 7,073,284; 6,311,682; 6,748,938; 6,860,259; 6,941,693; 6,973,748; 5,881,707; 5,967,133; 6,035,843; 6,474,326; 6,637,421; 6,644,295; 6,810,871; 6,901,923; 7,121,272; 7,100,593; 7,610,908; 7,603,997; 7,946,285; 6,349,711; 7,044,119; 7,185,646; 7,461,646; 7,556,032; 7,591,262; 7,617,819; 7,617,820; 7,640,925; 7,640,926; 7,866,308;

APPLICATION NUMBERS:

12/256,832; 12/613,958; 12/493,777; 11/654,721; 11/747,107; 12/503,504; 11/781,821; 60/832,548; 11/965,886; 10/280,115

Additional U.S. and International Patents may be pending.

UK

Unit 14 Premier Park, Acheson Way
Trafford Park Road, Trafford Park
Manchester, M17 1GA, England
T: +44(0) 161 872 5572
planetecclipse.com/contact

USA

130 Franklin Street
Building L4 & L5
Warren, RI, 02885, USA
T: +1 401 247 9061
planetecclipse.com/contact

EUROPE

PE-Paintball.De Gmbh
Langenberger Str. 9 Tor 5 & 6
Düsseldorf 40233, Germany
T: +49 (0) 211 210 230-0
planetecclipse.com/contact

© Planet Eclipse Ltd.

5035__EN_ETHA3M-Manual-V1