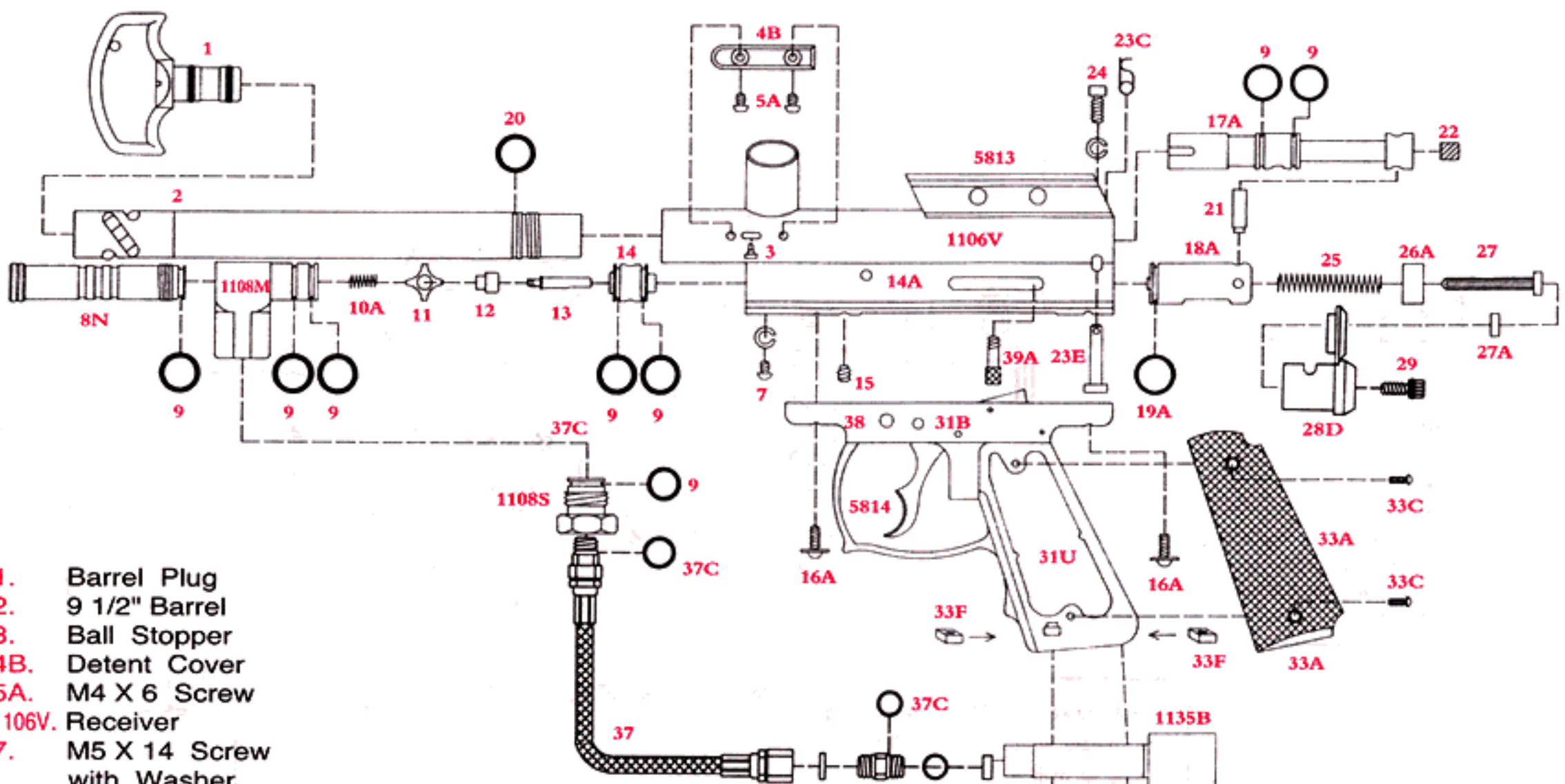


Spyder Compact 2 in 1



- 1. Barrel Plug
 - 2. 9 1/2" Barrel
 - 3. Ball Stopper
 - 4B. Detent Cover
 - 5A. M4 X 6 Screw
 - 1106V. Receiver
 - 7. M5 X 14 Screw with Washer
 - 8N. Low Pressure Chamber
 - 1108M. Vertical Adapter w/ LPC
 - 1108S. ASA Adapter
 - 9. O-ring #015 80D
 - 10A. Valve Spring
 - 11. Cup Seal Guide
 - 12. Cup Seal
 - 13. Valve Pin
 - 14. Valve Body
 - 14A*. Valve Body Roll Pin
 - 15. Valve Body Screw
 - 16A. M5 X 12.5 Screw
 - 17A. Venturi Bolt
 - 18A. Striker
 - 19A. Striker O-ring
 - 20*. Barrel O-ring
 - 21. Bolt Pin
 - 22. Bolt Screw
 - 23C. Disconnect Pin Lock
 - 23E. Quick Disconnect T-Pin
 - 24. Screw M4 X 8 w/ Washer
 - 25. Striker Spring
 - 26A. Striker Buffer
 - 27. Striker Spring Guide
 - 28D. Striker Plug W/ Bolt Plug
 - 29. Adjust Screw
 - 31B*. Sear
 - 31E*. Sear Spring
 - 31F*. Trigger Spring
 - 31Y. Double Trigger & Frame
 - 33A. 45 Grip Cover
 - 33C. 45 Grip Cover Screw
 - 33F. Nut Screw
 - 1135B. C/A Adapter
 - 36C. 5/32 X 7/8 Screw
 - 37. Metal Disconnect Hose
 - 37A. Fitter O-ring #009
 - 37B. Air Filter
 - 37C. Disconnect O-ring, #011
 - 37D. Plastic washer
 - 38. Safety Button
 - 39A. Striker Knob
 - 40*. Powerfeed Plug
 - 41E*. Spare Parts Kit
 - 42F. M8 X M8 Adapter
 - 48*. Trigger Roll Pin
 - 49*. Sear Roll Pin
 - 49A*. Secondary Sear Roll Pin
 - 5813. Raised Mini Sight Rail
 - 5814. Double Trigger
- *Not Pictured