

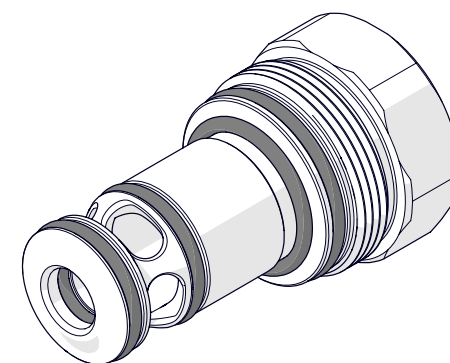
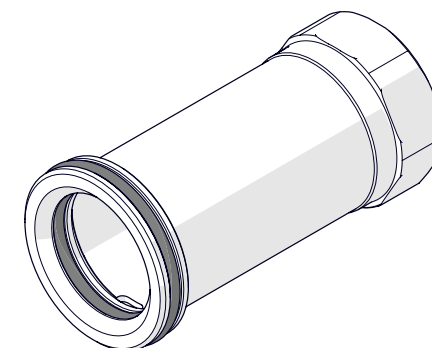
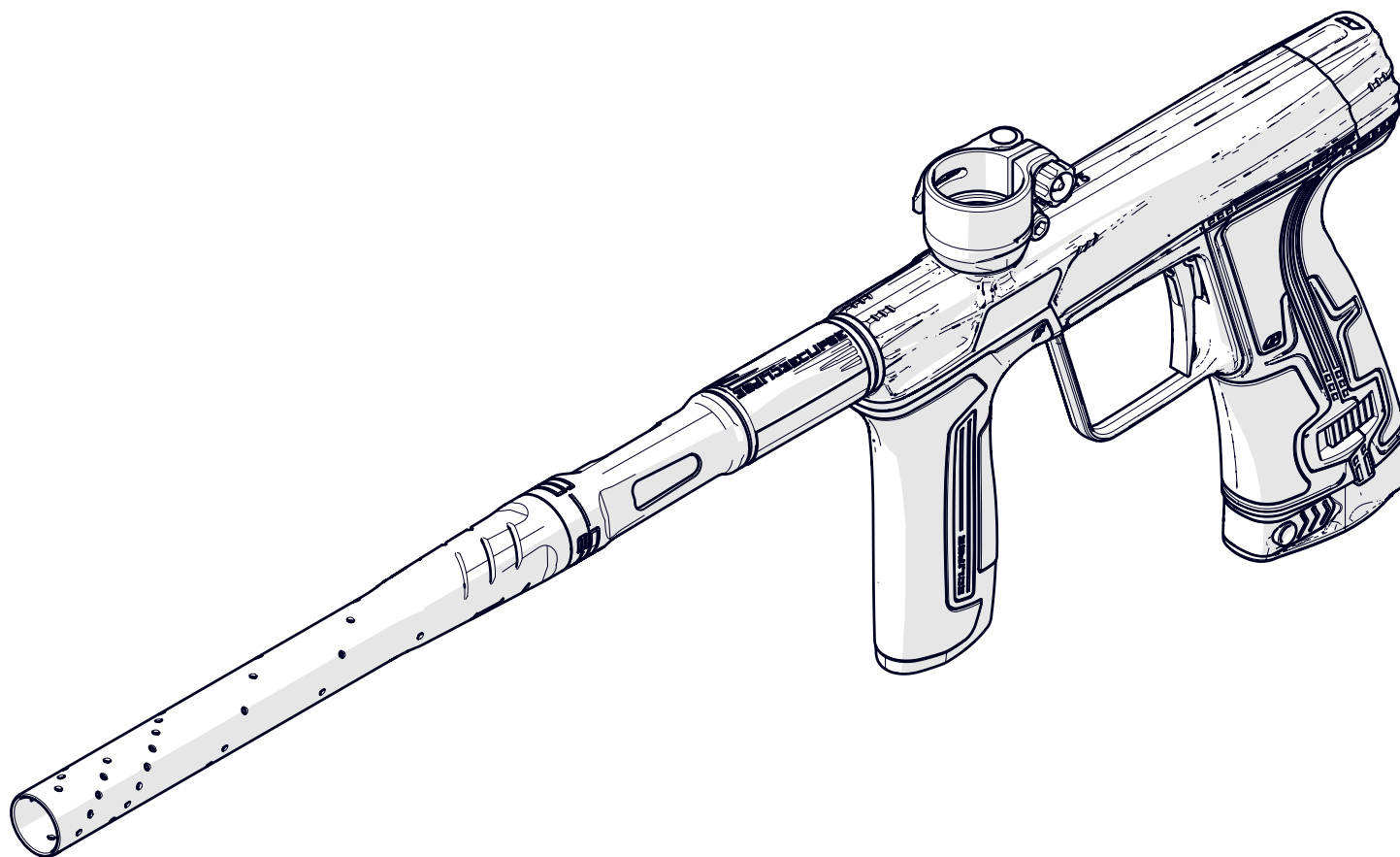


WORKSHOP MANUAL

PLANET ECLIPSE: CS3 .68CAL



.68CAL





WARNING

READ CAREFULLY BEFORE USE

- ⚠ **THE PLANET ECLIPSE CS3 IS NOT A TOY. PAINTBALL SAFETY RULES MUST BE FOLLOWED AT ALL TIMES.**
- ⚠ Careless or improper use of the CS3, including failure to follow instructions and warnings within this Workshop Manual could cause serious injury or death.
- ⚠ Do not remove or deface any warnings attached to the CS3.
- ⚠ Paintball industry standard eye/face/ear and head protection designed specifically to stop paintballs and meeting ASTM standard F1776 (USA) or CE standard (Europe) must be worn by the user and any person within range. Proper protection must be worn during assembly, cleaning and maintenance.
- ⚠ Hearing protection should be worn.
- ⚠ Never shoot at a person who is not wearing proper protection.
- ⚠ Never look directly into the barrel of the marker. Accidental discharge into the eyes may cause permanent injury or death. Never look into the barrel or breech area of the CS3 whilst the marker is switched on and able to fire.
- ⚠ The electronic ON/OFF button is the marker's disabling device. Always switch OFF when not in use.
- ⚠ Treat every marker as if it is loaded and ready to fire.
- ⚠ Always fit a barrel blocking device to the CS3 when not in use.
- ⚠ Always remove paintballs from the CS3 when not in use.
- ⚠ Do not field strip or remove any parts while the marker is pressurised.
- ⚠ Do not pressurise the CS3 without all the components of the marker correctly installed, as high-pressure gas may be emitted.
- ⚠ Do not fire the CS3 without the bolt correctly installed.
- ⚠ Never put your finger or any foreign objects into the paintball feed tube of the CS3.
- ⚠ Never allow pressurised gas to come into contact with any part of your body.
- ⚠ Always remove the first stage regulator and relieve all residual gas pressure from the CS3 before disassembly.
- ⚠ Always remove the first stage regulator and relieve all residual gas pressure from the CS3 for transport and storage.
- ⚠ Always follow the guidelines given with your first stage regulator for safe transportation and storage.
- ⚠ Always store the CS3 in a secure place.
- ⚠ Observe all local and national laws, regulations and guidelines.
- ⚠ Persons under 18 years of age must have adult supervision when using or handling the CS3.
- ⚠ Only use professional paintball fields where codes of safety are strictly enforced.
- ⚠ Only use compressed air/nitrogen. Do not use any other compressed gas or pressurised liquid including CO2.
- ⚠ Always follow instructions, warnings and guidelines given with any first stage regulator you use with the CS3.
- ⚠ Use 0.68 inch calibre paintballs only.
- ⚠ Always measure your marker's velocity before playing paintball, using a suitable chronograph.
- ⚠ Never shoot at velocities in excess of 300 feet (91.44 metres) per second, or at velocities greater than local or national laws allow.
- ⚠ Any installations, modifications or repairs should be carried out by a qualified individual at a licensed and insured paintball facility.

This Users Manual is in English.



It contains important safety guidelines and instructions. Should you be unsure at any stage, or unable to understand the contents of this manual you must seek expert advice.



Le mode d'emploi est en Anglais.

Il contient des instructions et mesures de sécurité importantes. En cas de doute, ou s'il vous est impossible de comprendre le contenu du mode d'emploi, demandez conseil à un expert.



Este manual de usuarios (operarios)

Usarios está en Inglés. Contiene importantes normas de seguridad e instrucciones. Si no está seguro de algún punto o no entiende los contenidos de este manual debe consultar con un experto.



Diese Bedienungs - und Benutzeranleitung ist in English.

Sie enthält wichtige Sicherheitsrichtlinien und -bestimmungen. Sollten Sie sich in irgendeiner Weise unsicher sein, oder den Inhalte dies Heftes nicht verstehen, lassen Sie sich bitte von einen Experten beraten.



CONTENTS

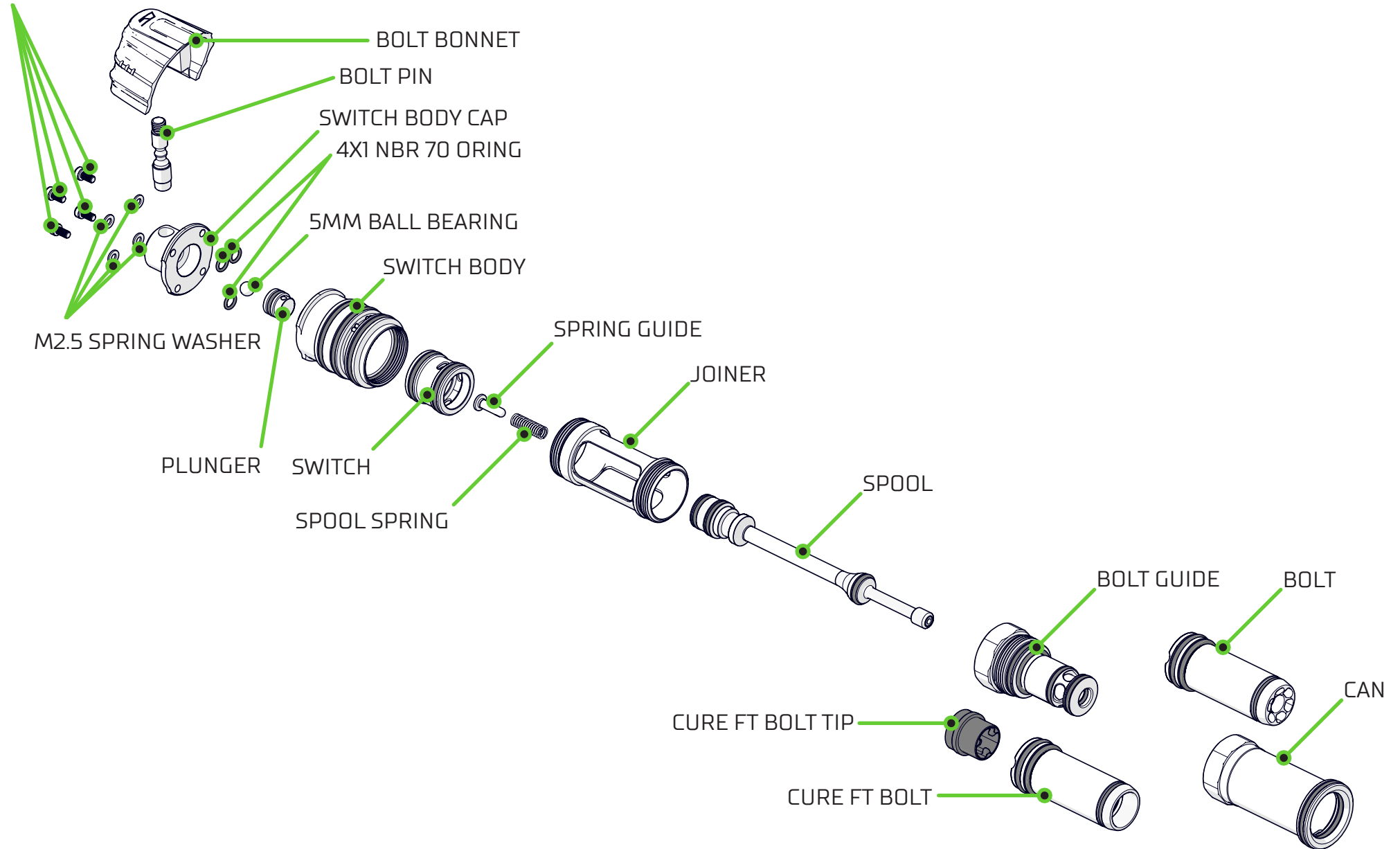
01	CS3 BOLT SYSTEM
02	CAN ASSEMBLY
03	BOLT ASSEMBLY
04	CURE FT BOLT ASSEMBLY
05	BOLT GUIDE ASSEMBLY
06	SPOOL ASSEMBLY
07	SWITCH ASSEMBLY
08	SWITCH BODY ASSEMBLY
09	REGULATOR ASSEMBLY
10	SOLENOID ASSEMBLY
11	FRAME SUB-ASSEMBLY
12	TRIGGER ASSEMBLY
13	BATTERY HOUSING ASSEMBLY
14	POPS ASSEMBLY
15	FEEDNECK ASSEMBLY
16	BREECH SENSOR (BS) ASSEMBLY
17	SERVICE INDICATOR - LUBRICATION REQUIRED
18	SERVICE INDICATOR - SERVICE REQUIRED
20	LEAKS DOWN THE BARREL
21	FIRST SHOT DROP OFF (FSDO)
22	'PUFFS' WHEN TRIGGER IS PULLED
23	DOES NOT FULLY CYCLE
24	SOLENOID LEAK
25	CONSTANT HIGH VELOCITY
26	INLINE REGULATOR / POPS LEAK
27	BREAKING PAINT IN THE BREECH
28	INCONSISTANT SHOT TO SHOT FPS
29	INEFFICIENT / LOW SHOT COUNT



1

CS3 BOLT SYSTEM

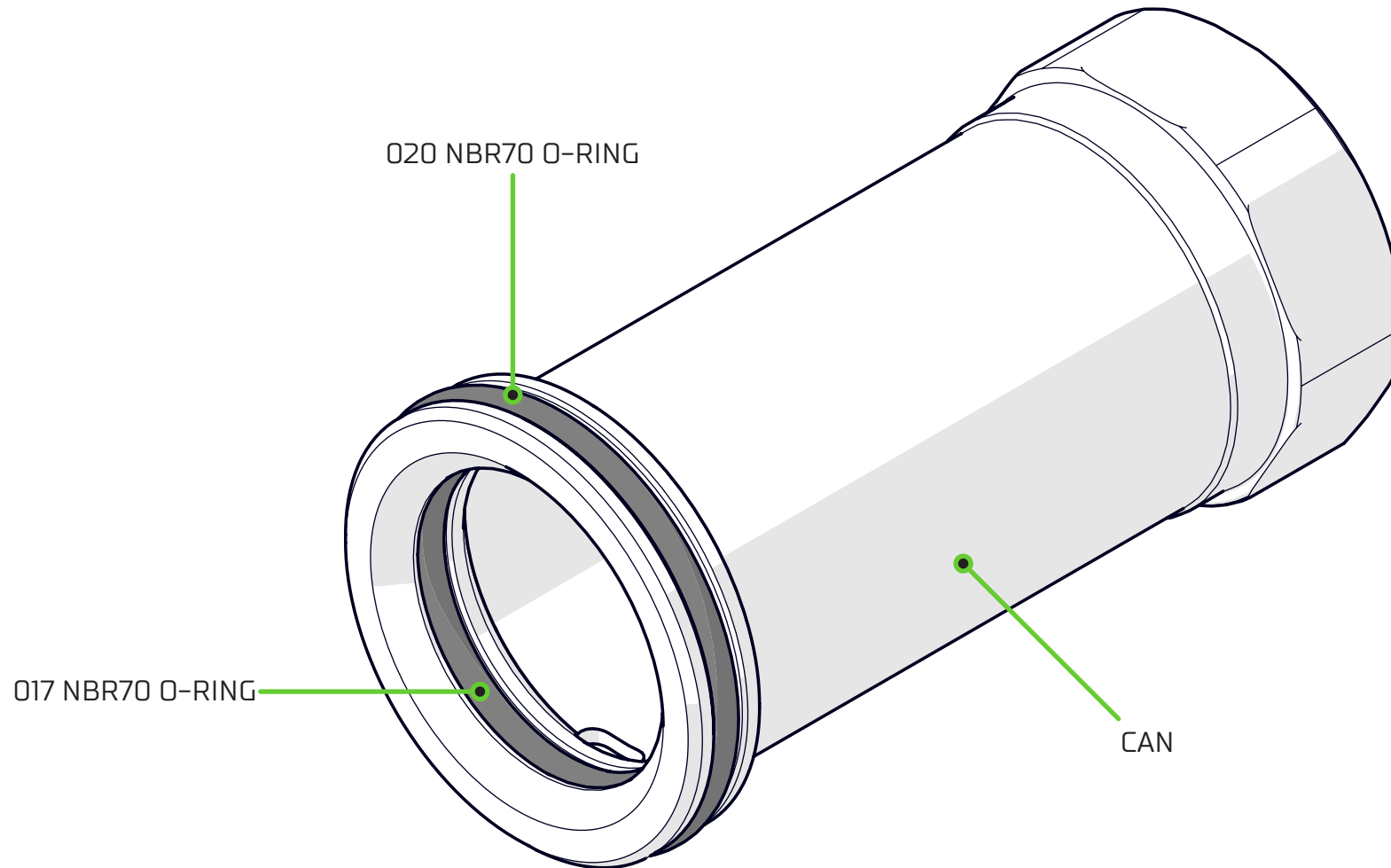
M2.5 X 8 CAP HEAD SOCKET SCREW





2

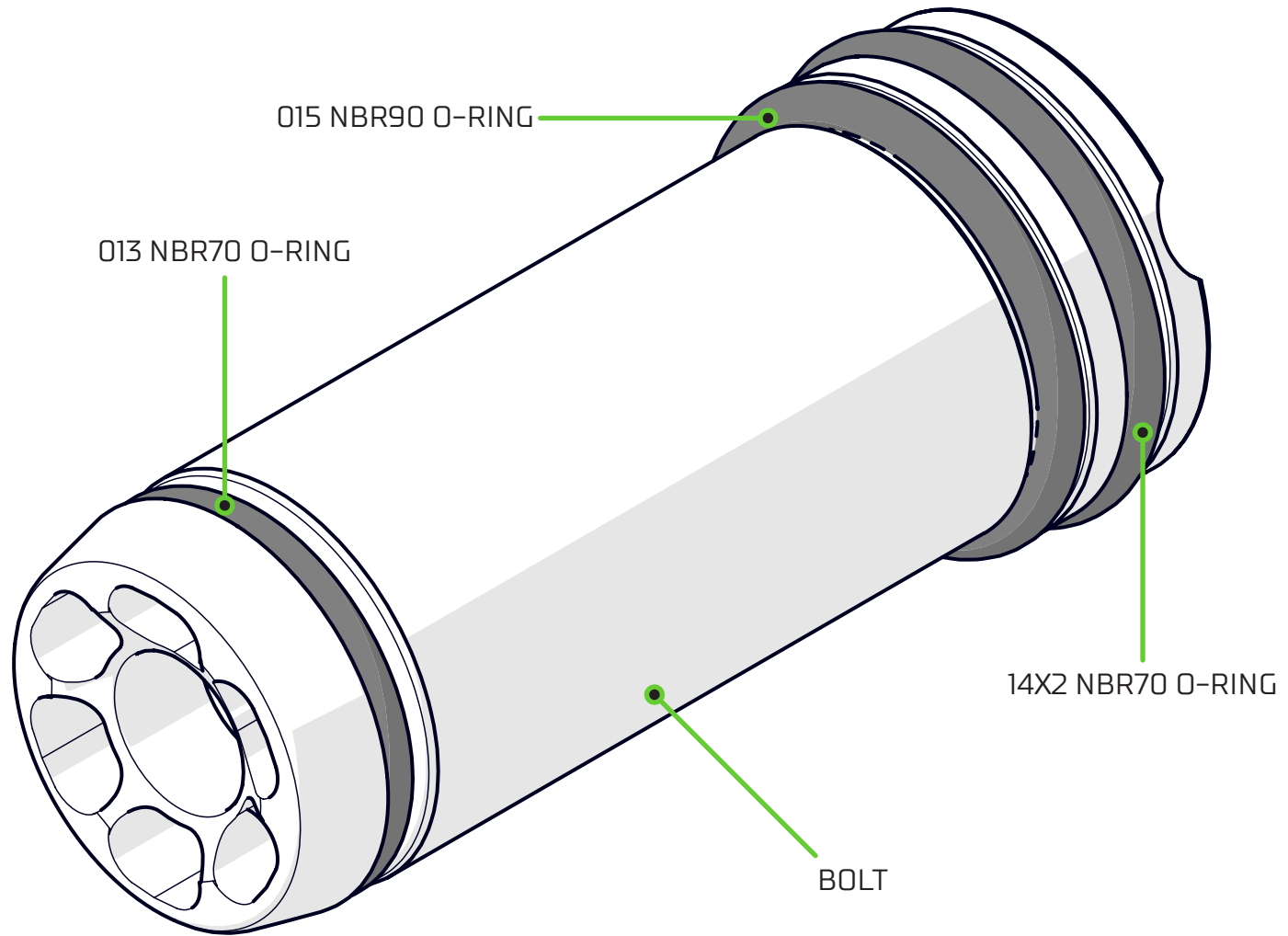
CAN ASSEMBLY





3

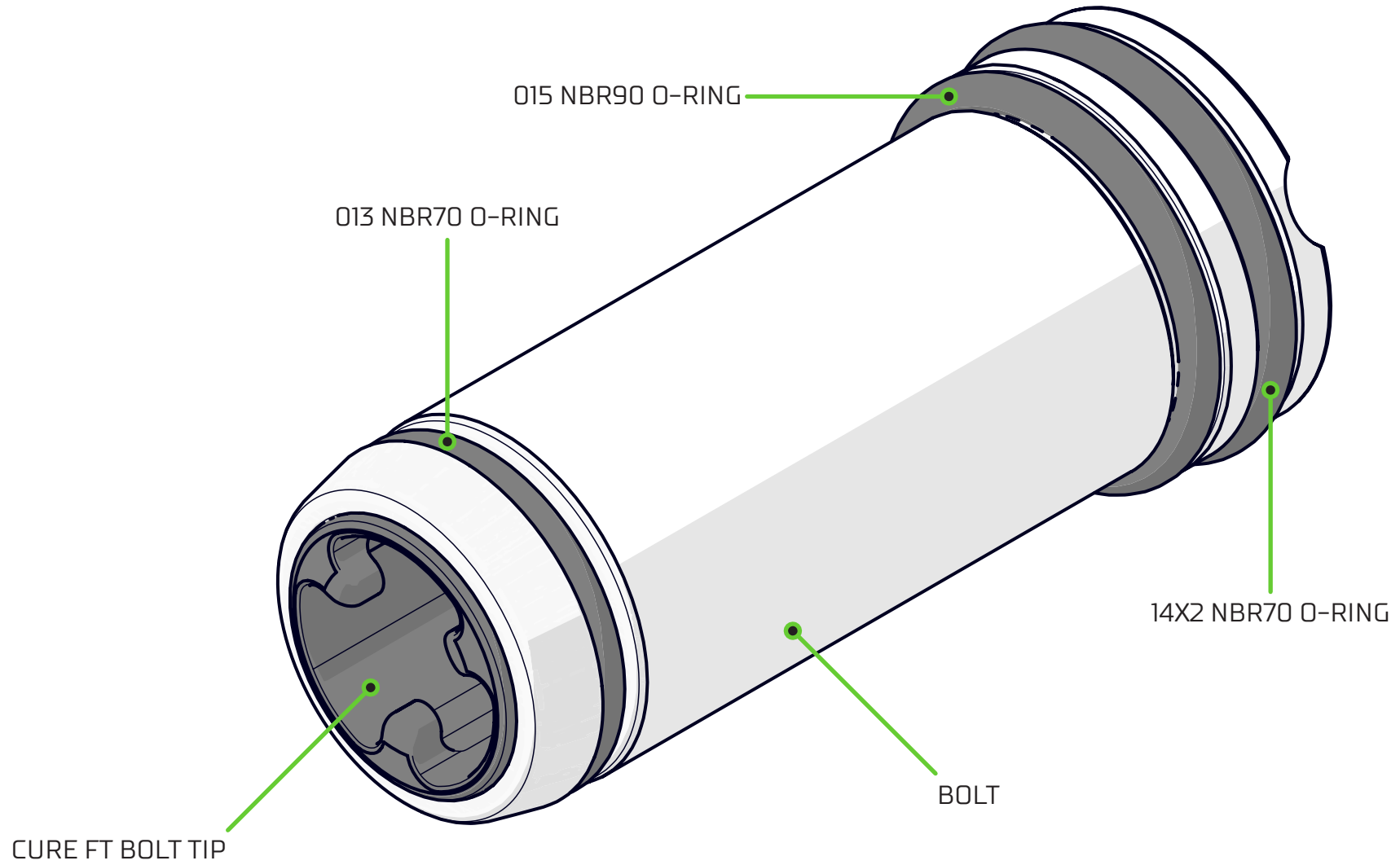
BOLT ASSEMBLY





4

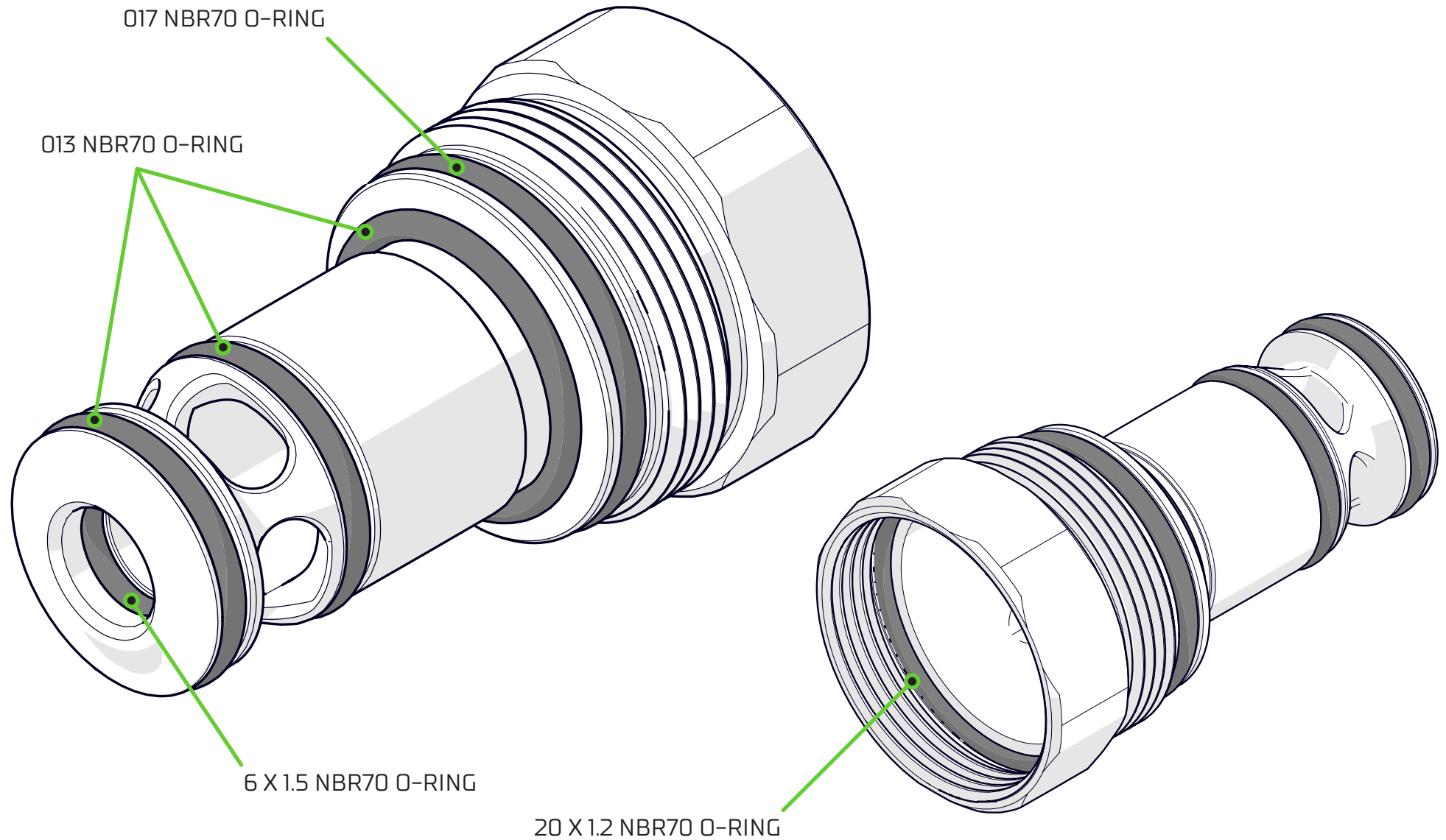
CURE FT BOLT ASSEMBLY





5

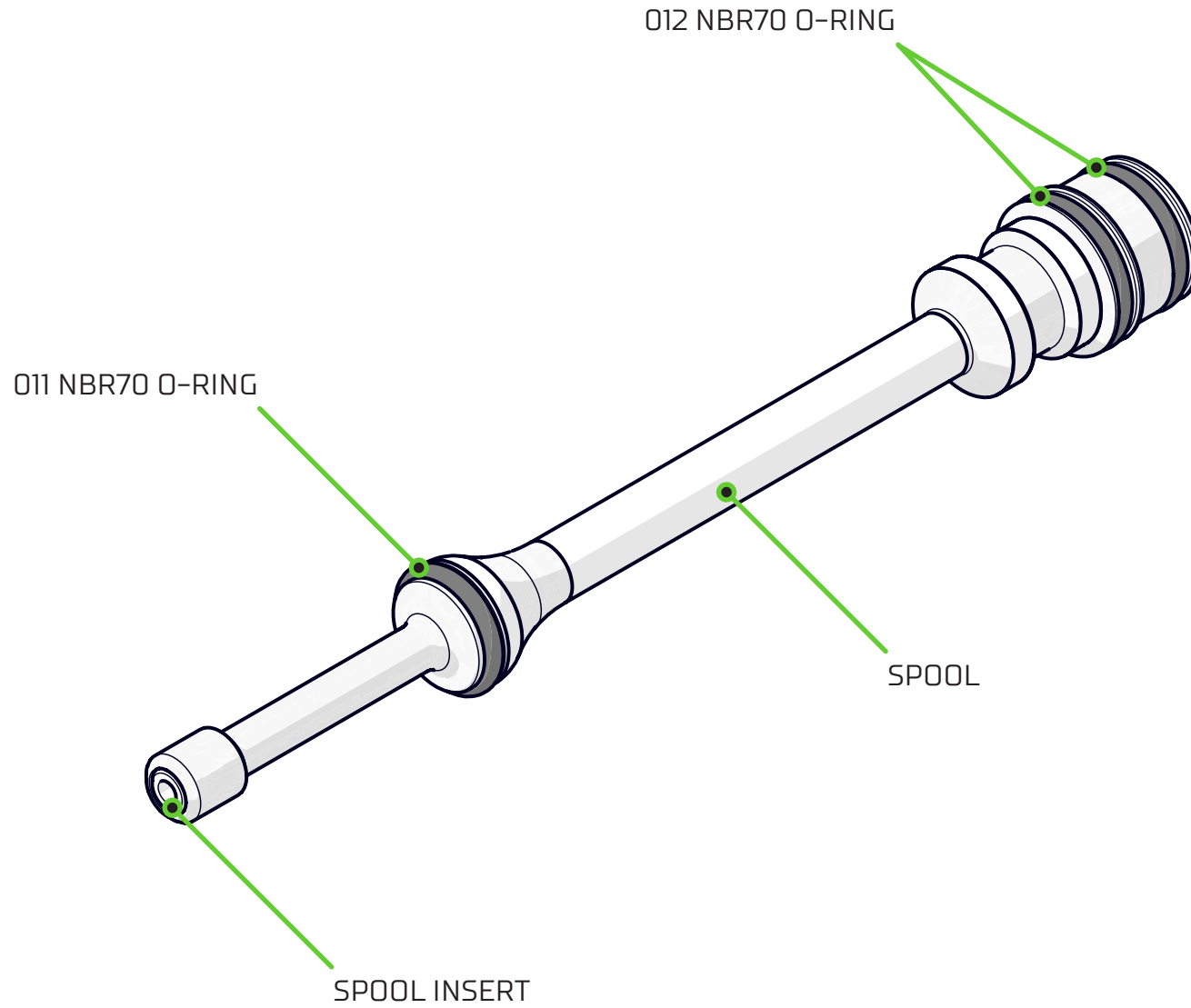
BOLT GUIDE ASSEMBLY





6

SPOOL ASSEMBLY

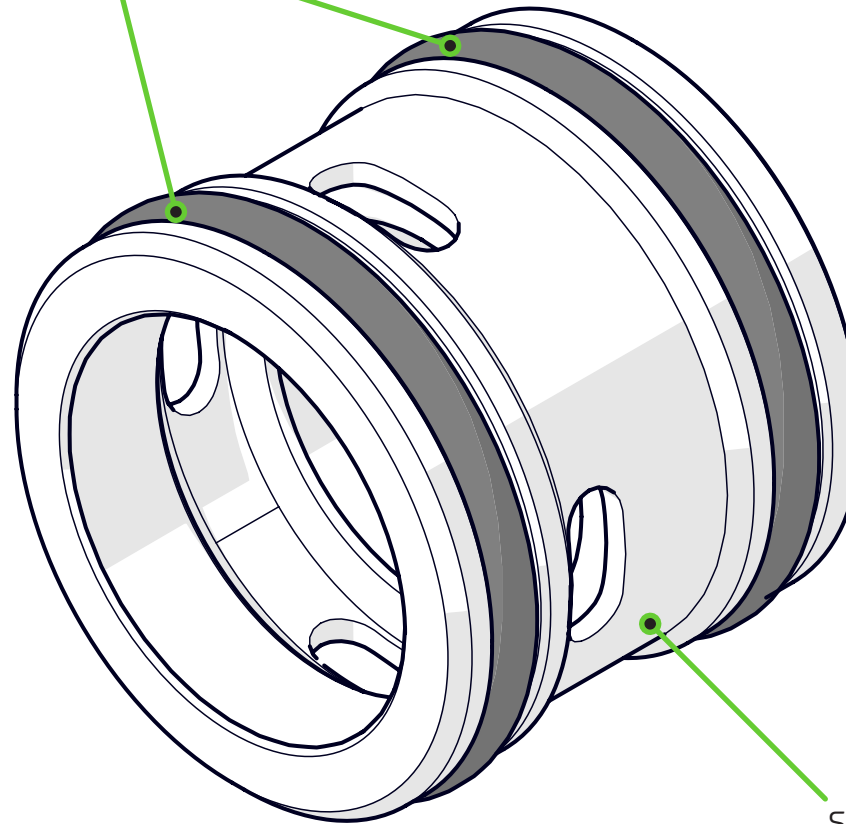




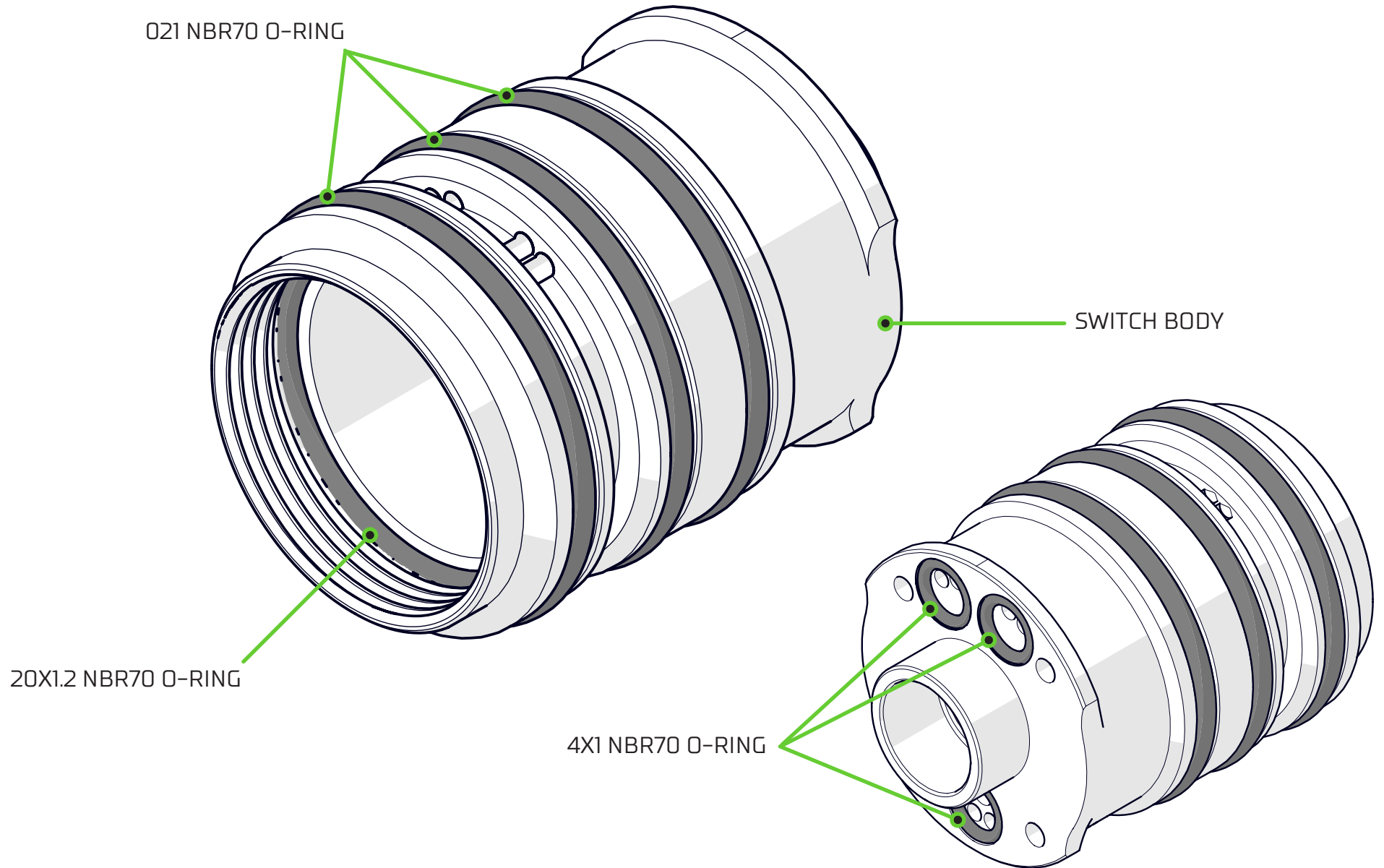
7

SWITCH ASSEMBLY

016 NBR70 O-RING



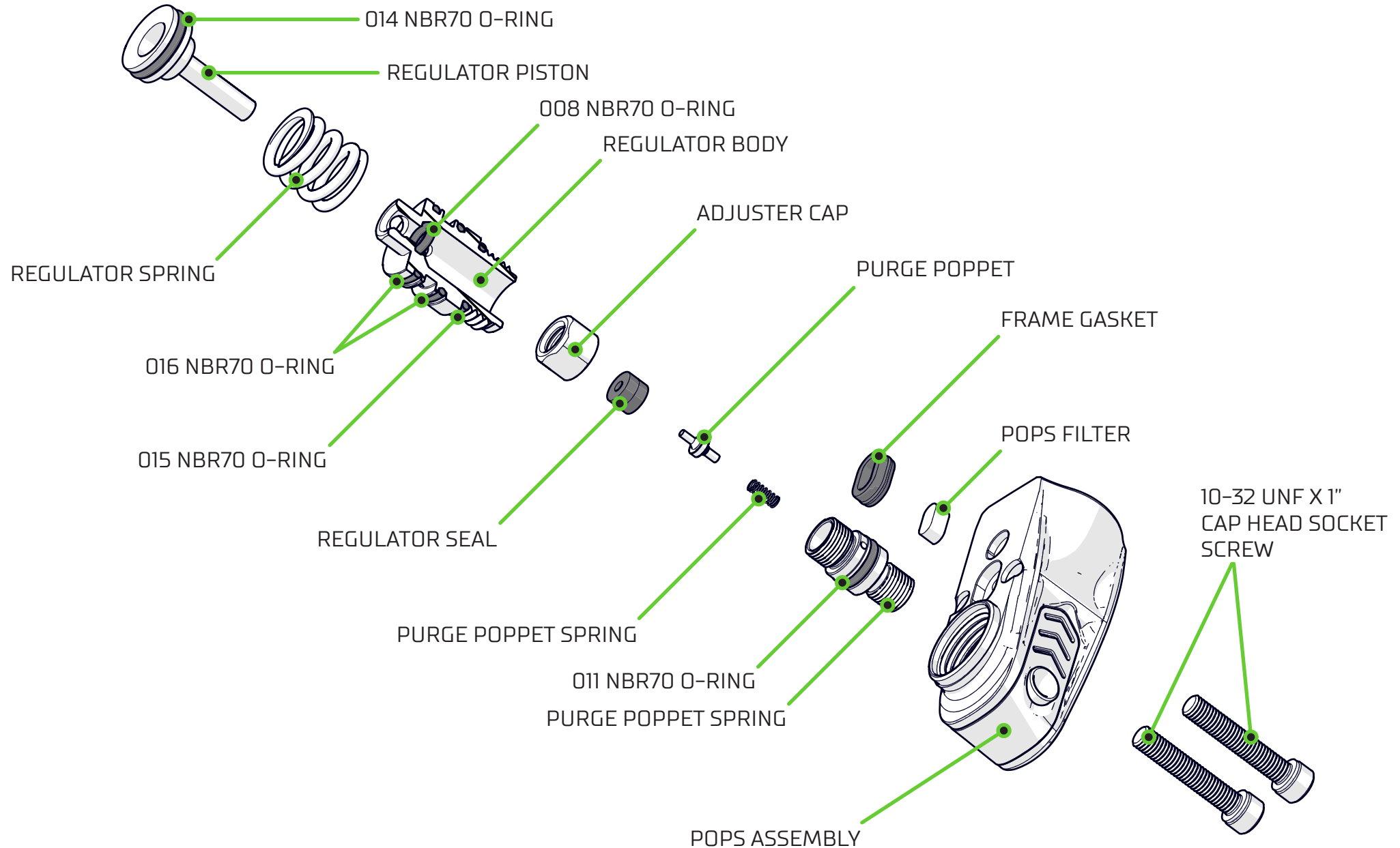
SWITCH





9

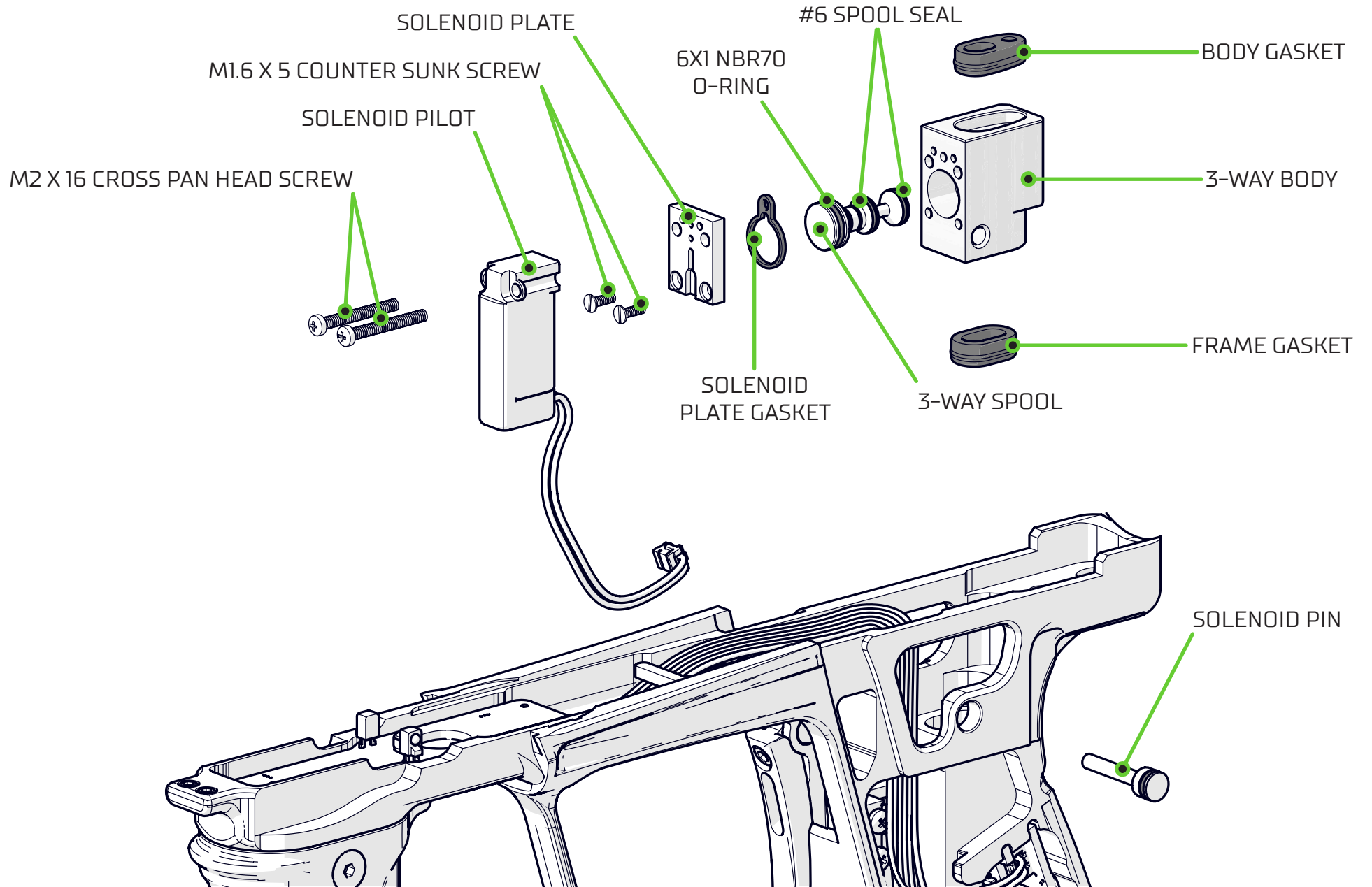
REGULATOR ASSEMBLY

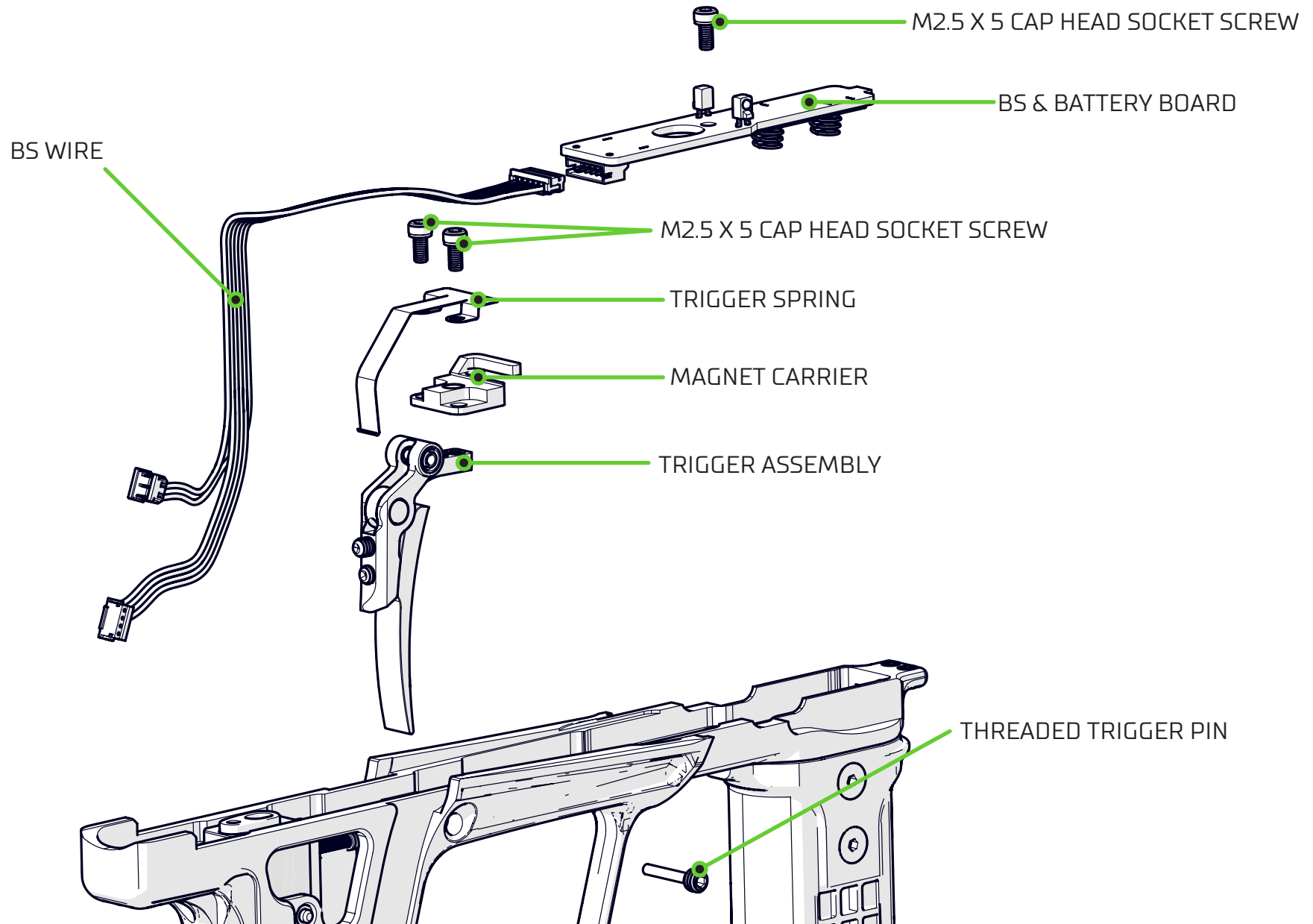


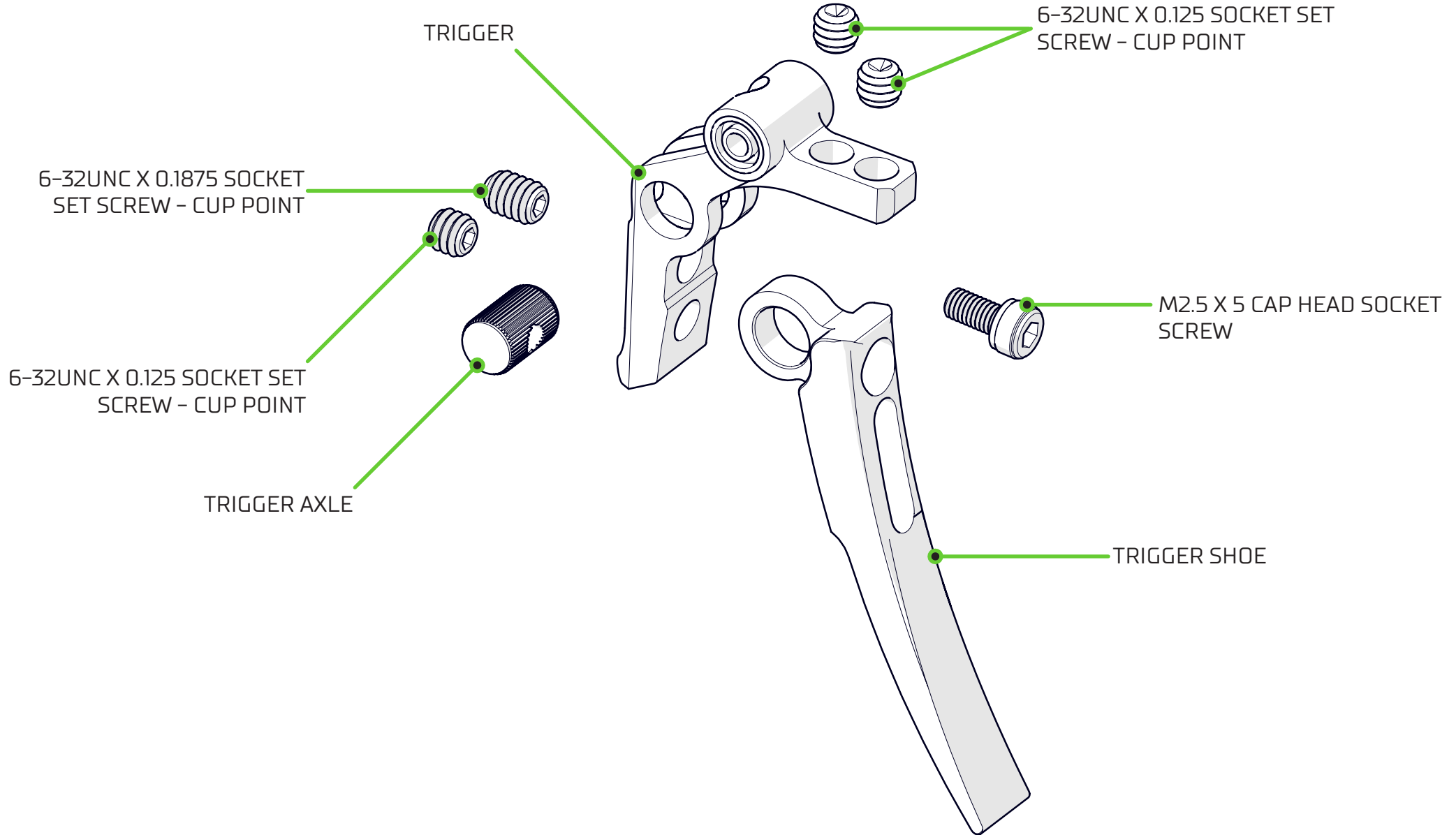


10

SOLENOID ASSEMBLY









6-32 UNC X 0.25/0.3125 SOCKET
COUNTER SUNK SCREW

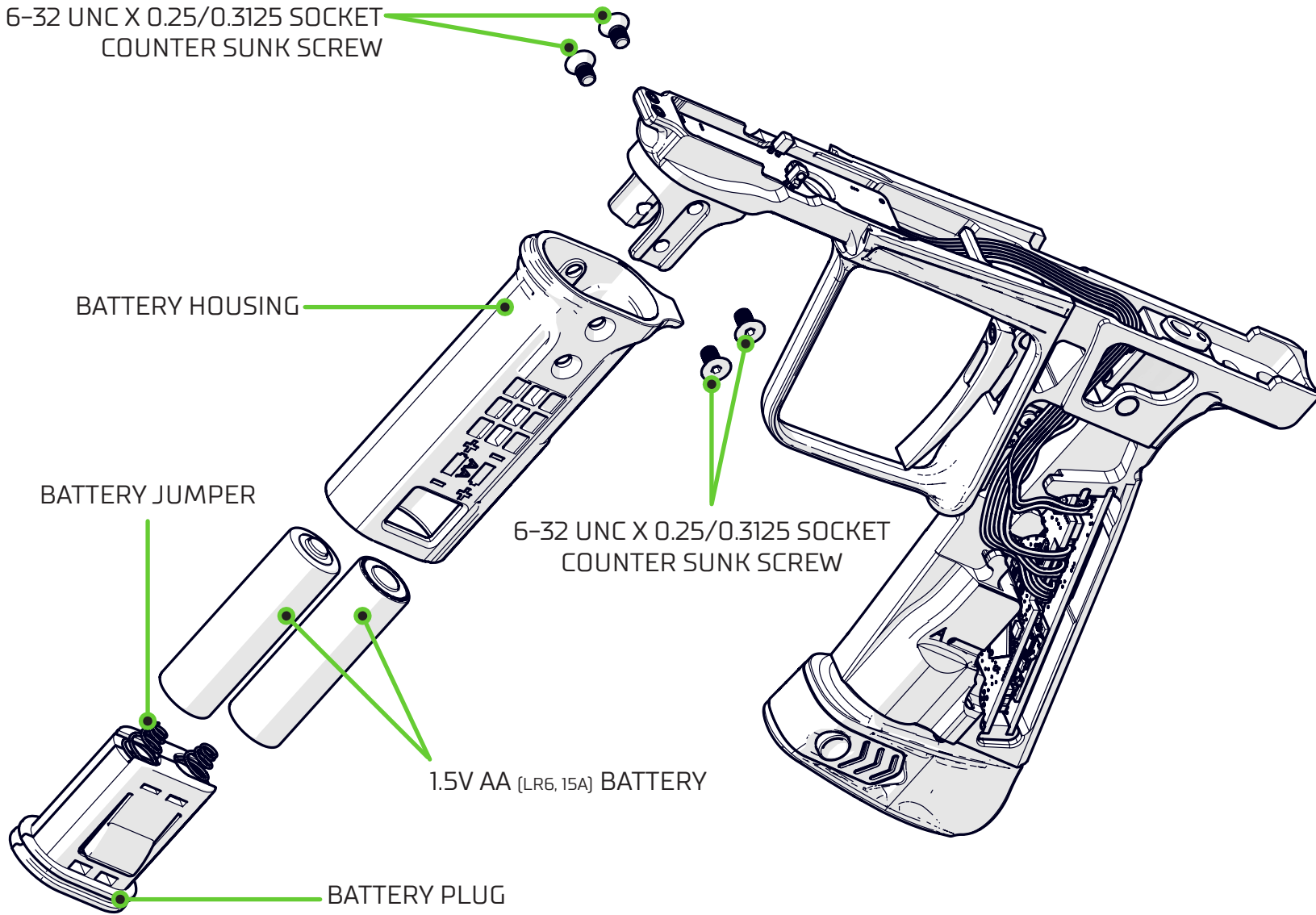
BATTERY HOUSING

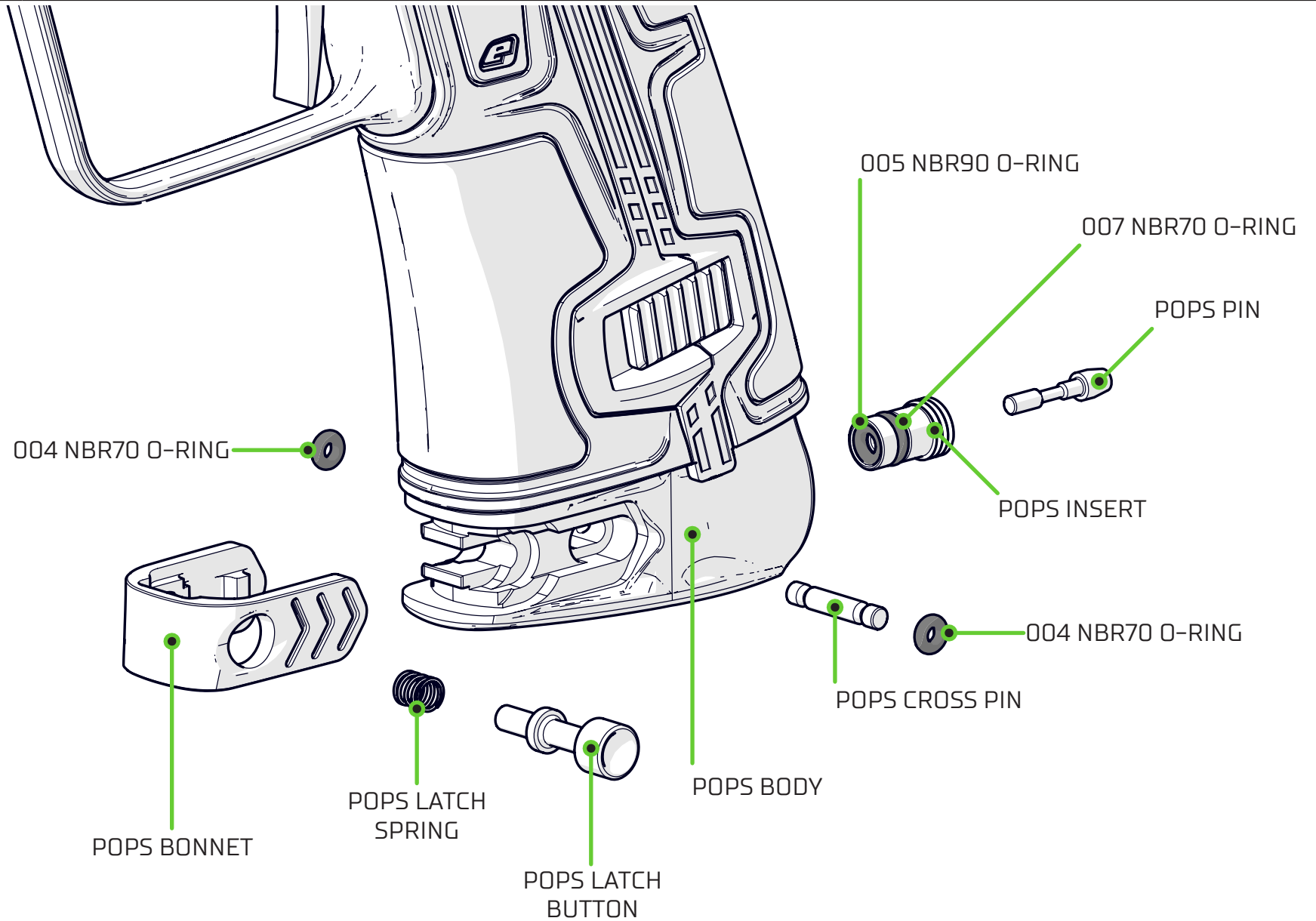
BATTERY JUMPER

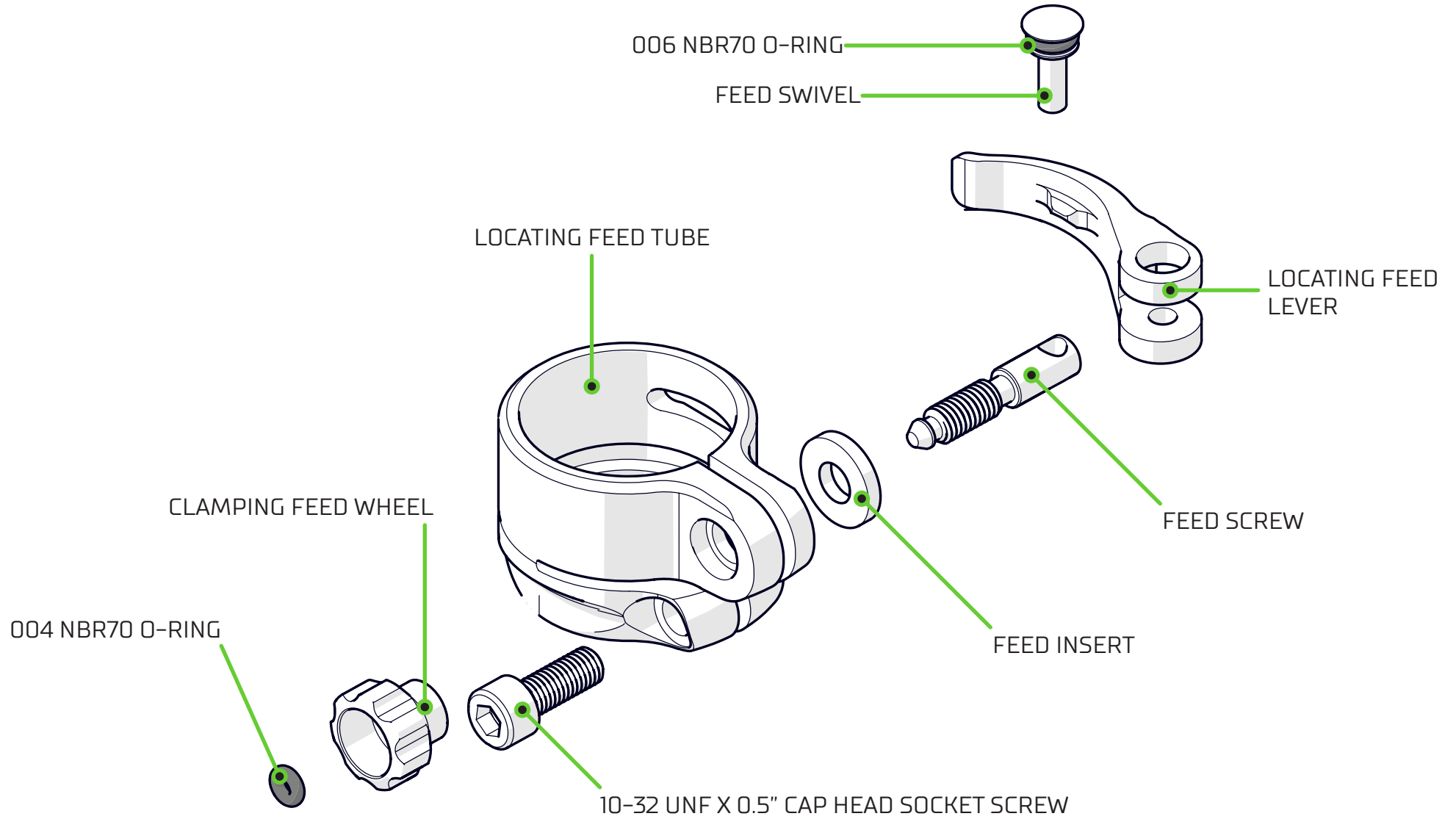
6-32 UNC X 0.25/0.3125 SOCKET
COUNTER SUNK SCREW

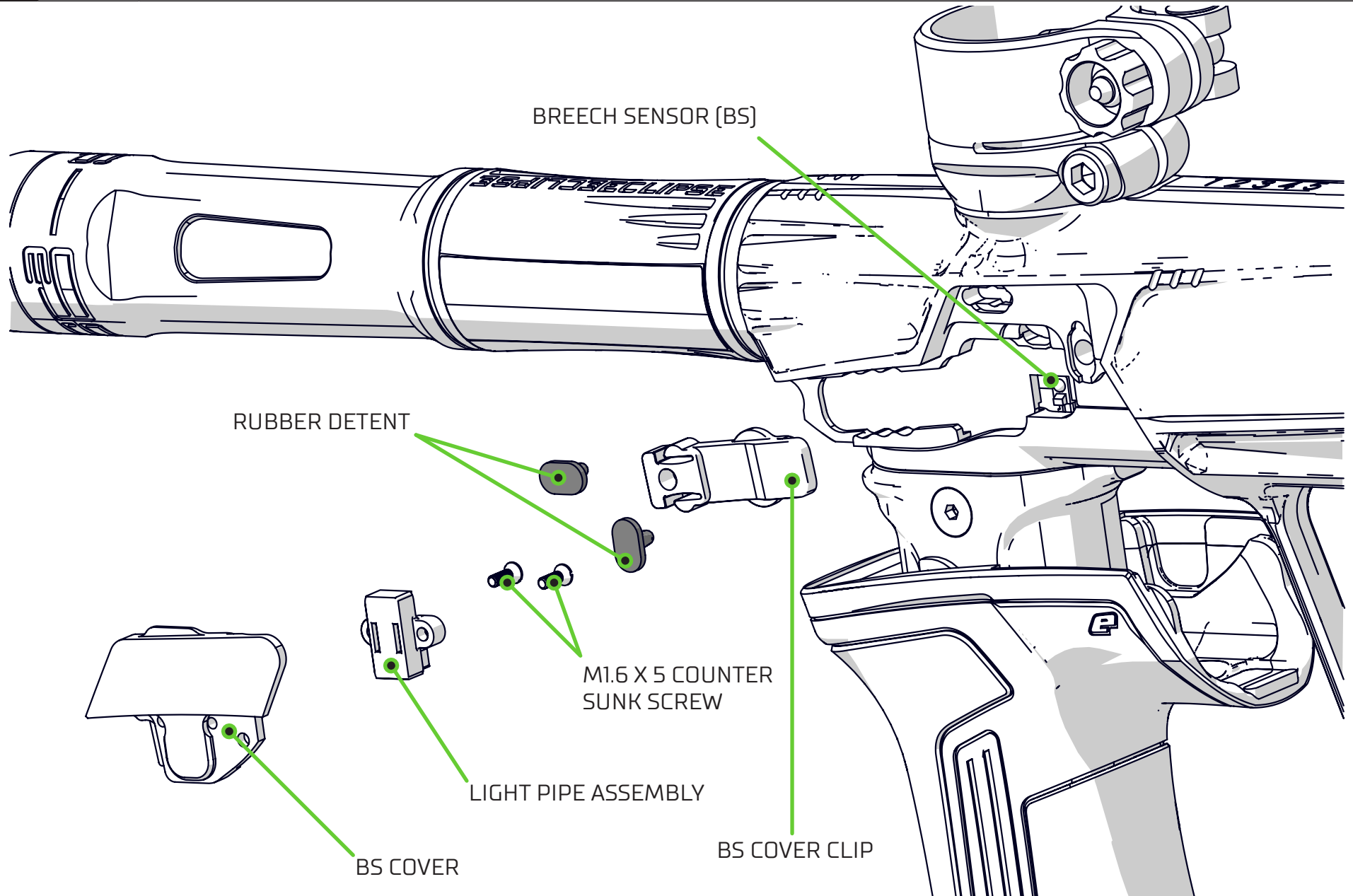
1.5V AA (LR6, 15A) BATTERY

BATTERY PLUG







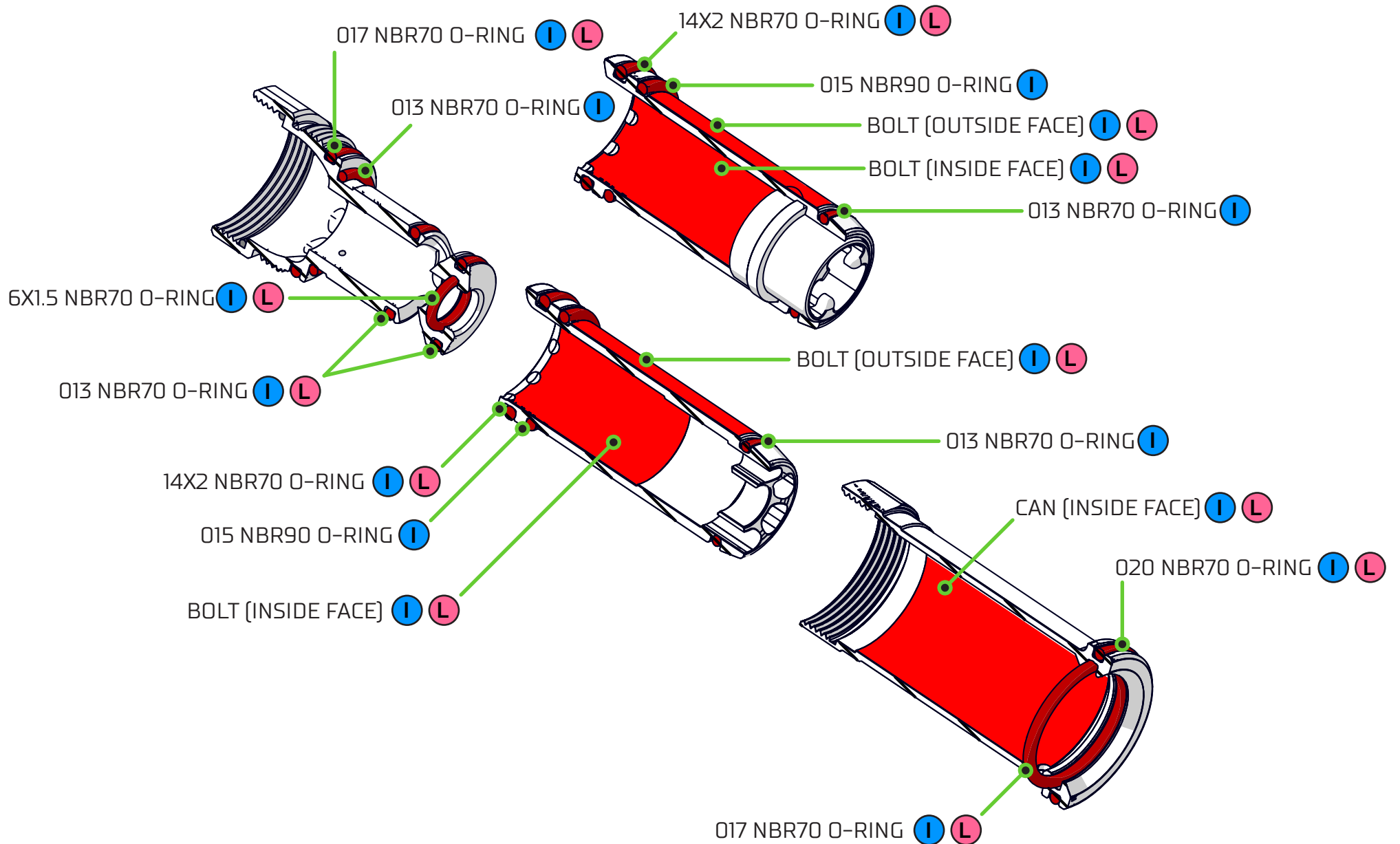




SERVICE INDICATOR - LUBRICATION REQUIRED

CLEAN, INSPECT & LUBRICATE / CHANGE HIGHLIGHTED SEALS AND FACES

 = CLEAN & INSPECT  = LUBRICATE





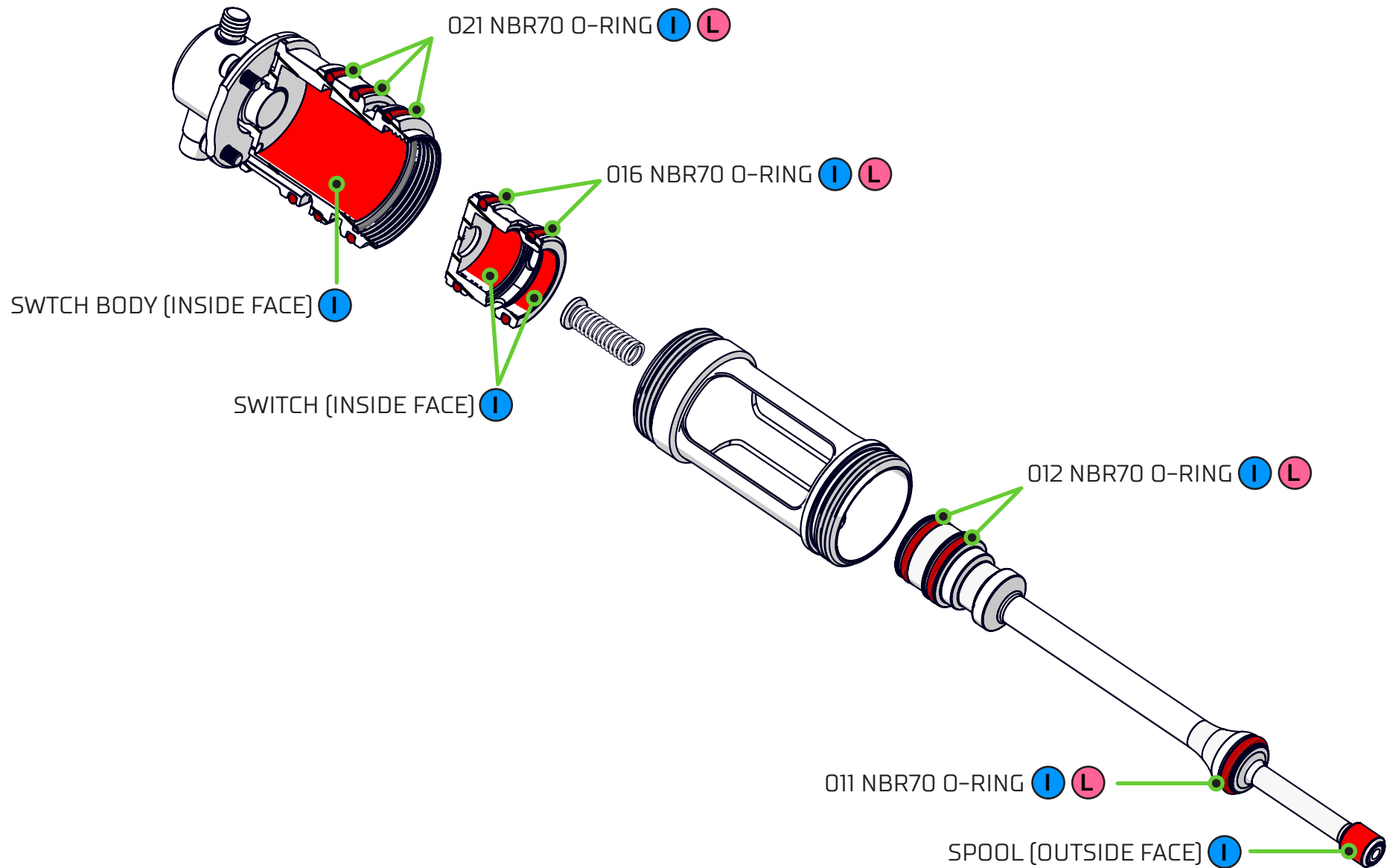
18

SERVICE INDICATOR - *SERVICE REQUIRED

PART 1/2

CLEAN AND LUBRICATE / CHANGE HIGHLIGHTED SEALS AND FACES

I = CLEAN & INSPECT **L** = LUBRICATE

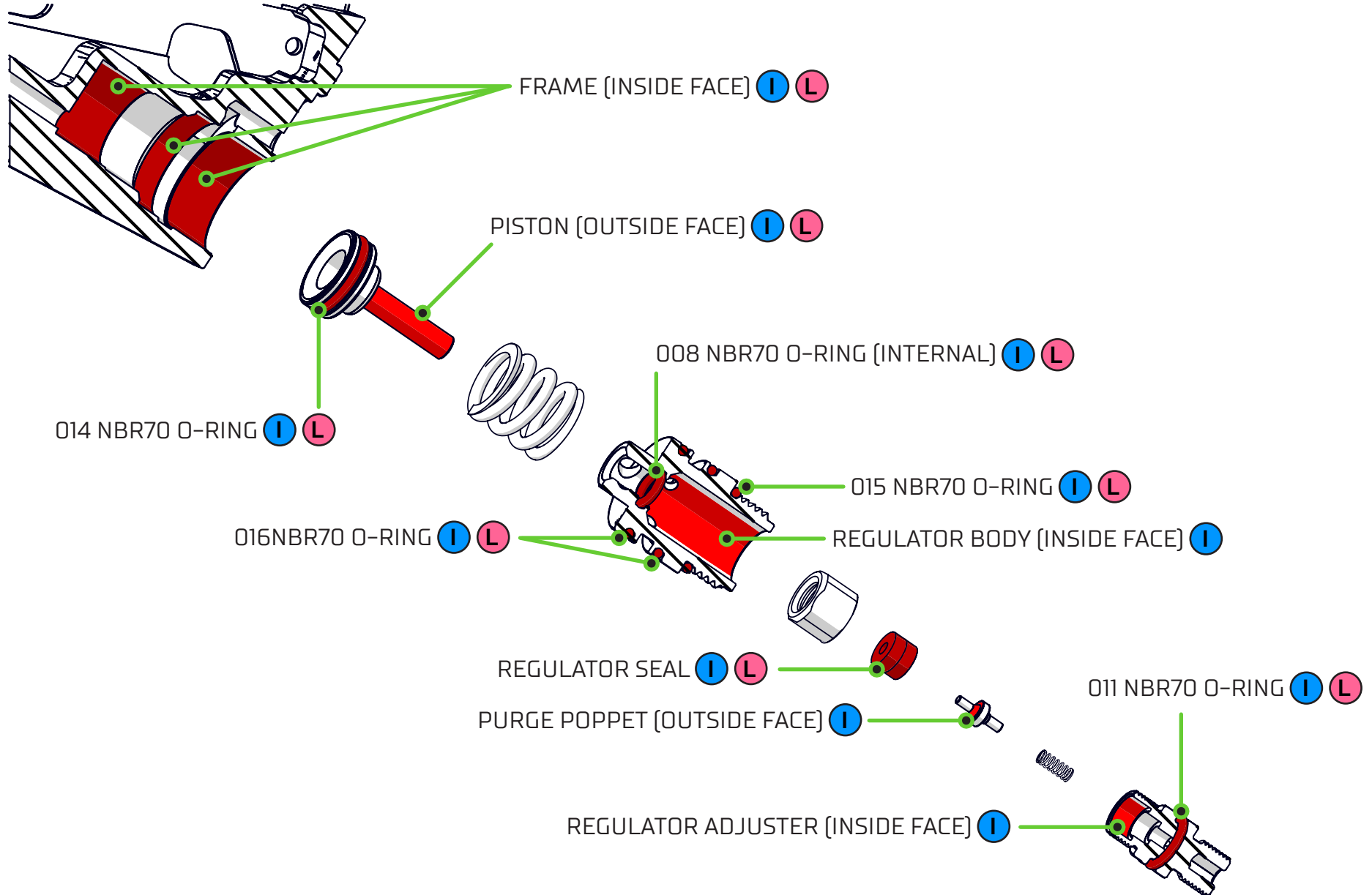


*In addition to the 'lubrication' guide on previous page



CLEAN AND LUBRICATE / CHANGE HIGHLIGHTED SEALS AND FACES

I = CLEAN & INSPECT L = LUBRICATE





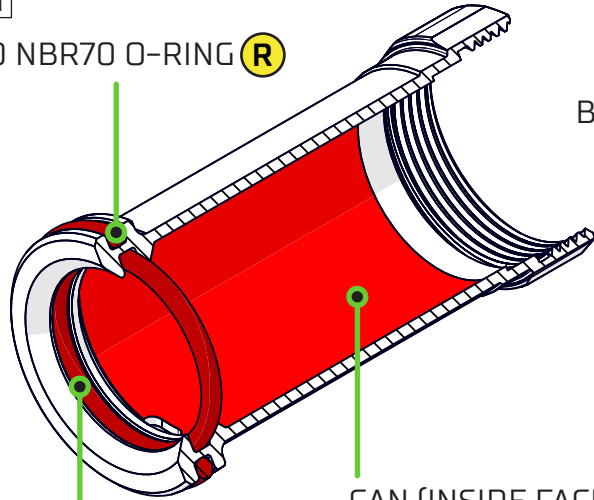
LEAKS DOWN THE BARREL

CLEAN AND LUBRICATE / CHANGE HIGHLIGHTED SEALS AND FACES

C = COMMON FAULT **R** = RARE FAULT

CAN

020 NBR70 O-RING **R**

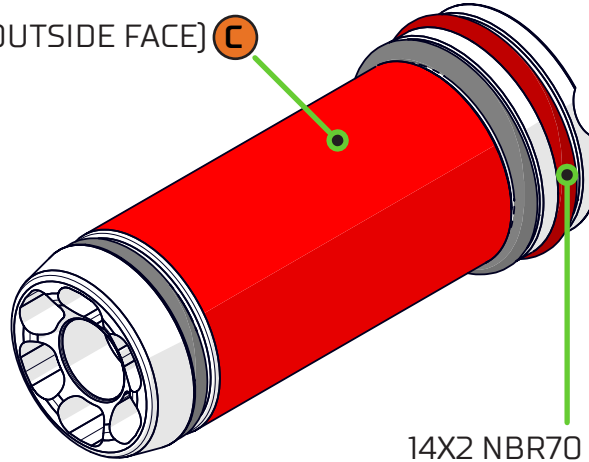


CAN (INSIDE FACE) **C**

017 NBR70 O-RING **C**

BOLT

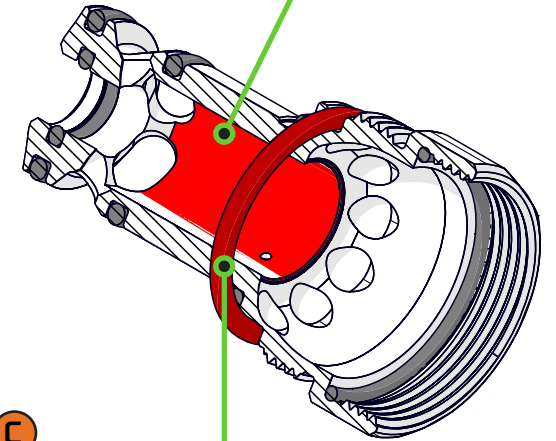
BOLT (OUTSIDE FACE) **C**



14X2 NBR70 O-RING **C**

BOLT GUIDE

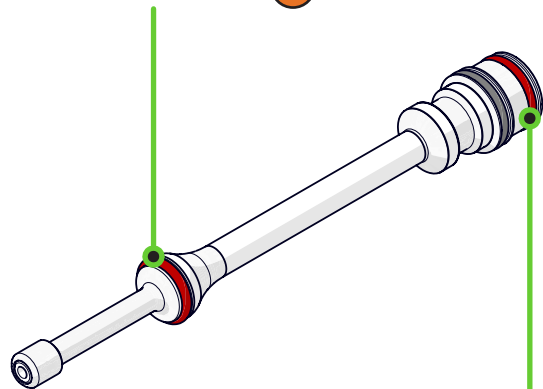
BOLT GUIDE (INSIDE FACE) **R**



017 NBR70 O-RING **R**

SPOOL

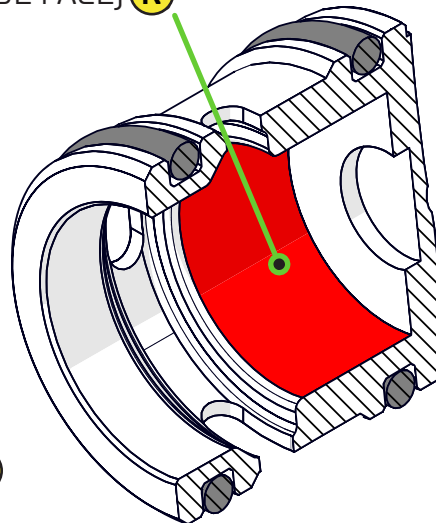
011 NBR70 O-RING **C**



012 NBR70 O-RING **R**

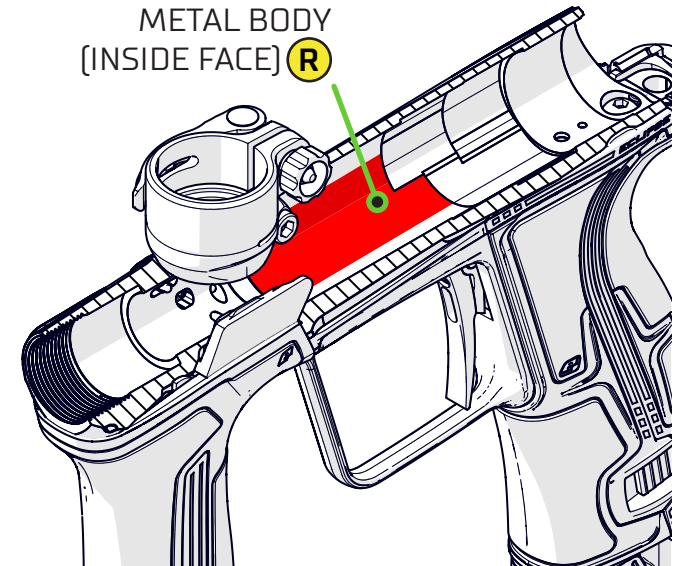
SWITCH

SWITCH (INSIDE FACE) **R**



BODY

METAL BODY (INSIDE FACE) **R**





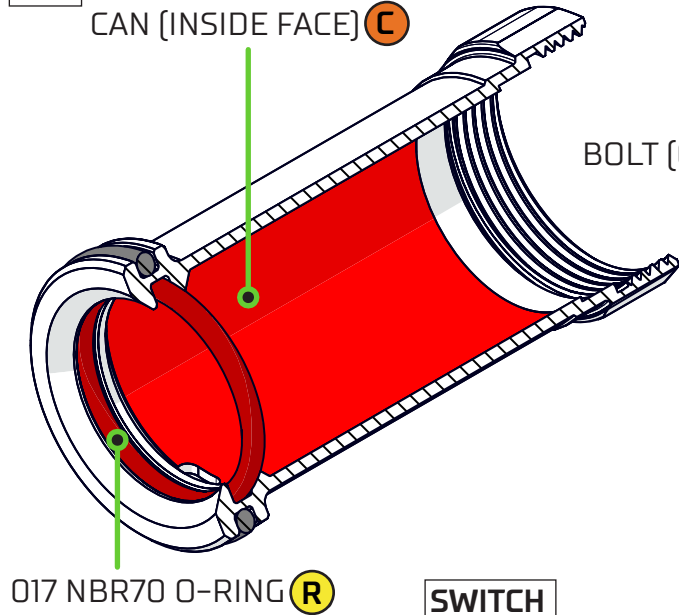
21

FIRST SHOT DROP OFF (FSDO)

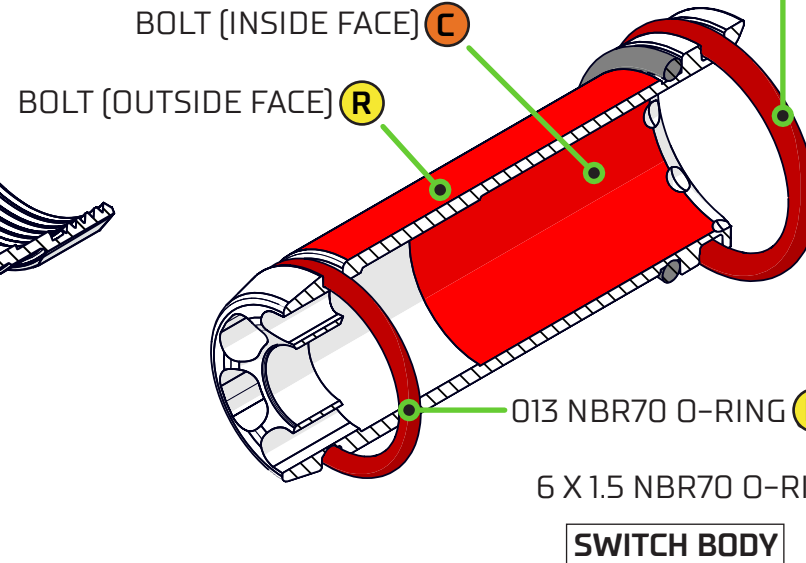
CLEAN AND LUBRICATE / CHANGE HIGHLIGHTED SEALS AND FACES

C = COMMON FAULT **R** = RARE FAULT

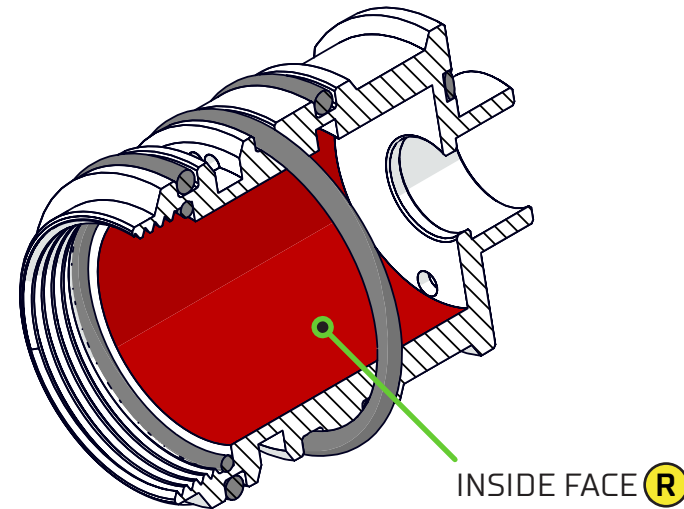
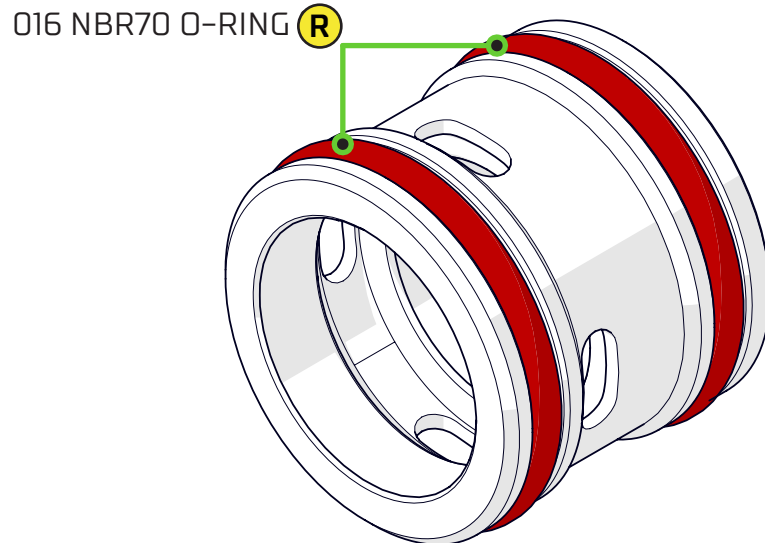
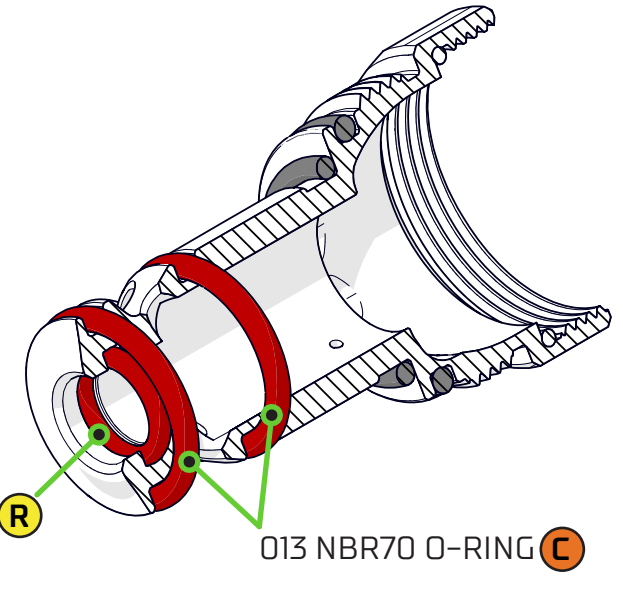
CAN



BOLT



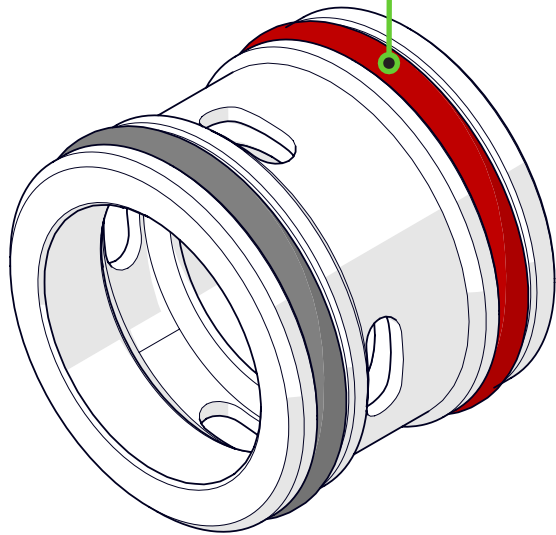
BOLT GUIDE





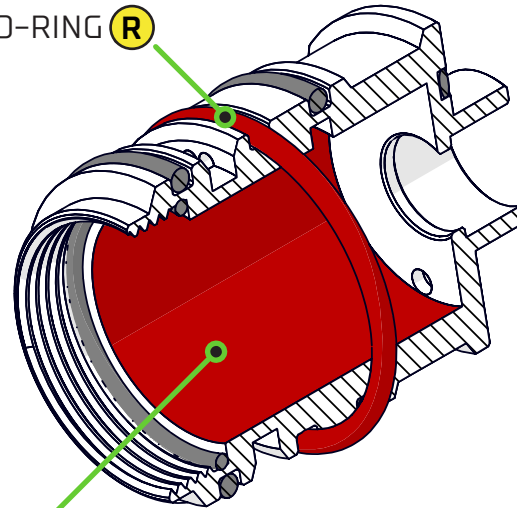
SWITCH

016 NBR70 O-RING **C**

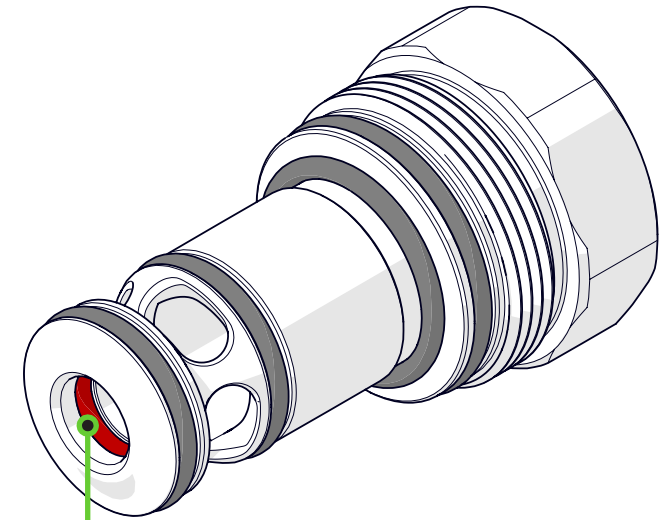


SWITCH BODY

021 NBR70 O-RING **R**



VALVE BODY (INSIDE FACE) **R**



6X1.5 NBR70 O-RING **R**

(IF THIS O-RING IS DAMAGED, INCORRECTLY SIZED OR NOT LUBRICATED CORRECTLY THEN THE MARKER MAY EXHIBIT CONSTANT LOW VELOCITY)



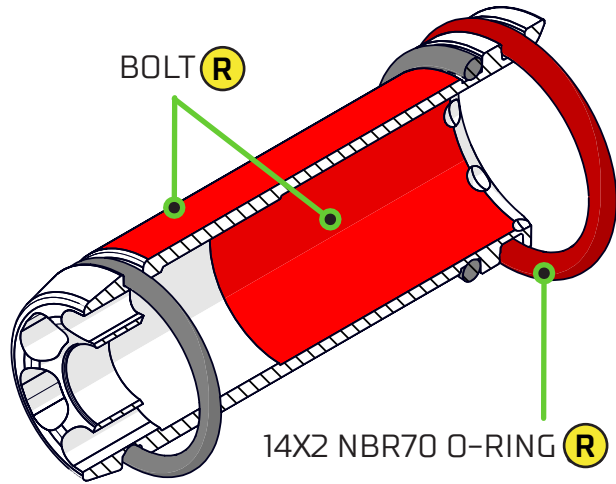
23

DOES NOT FULLY CYCLE

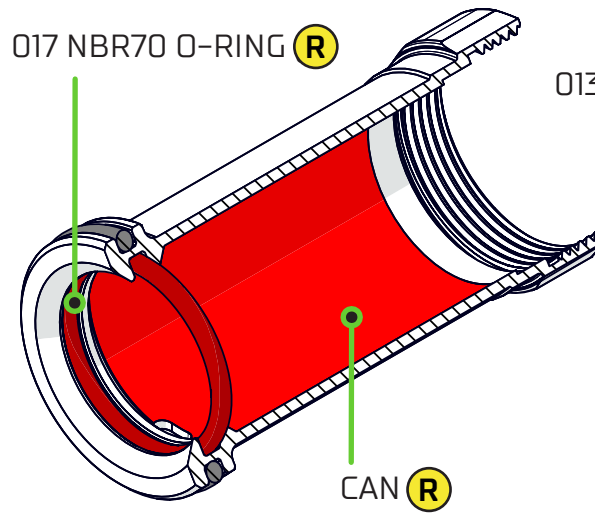
CLEAN AND LUBRICATE HIGHLIGHTED SEALS AND FACES

C = COMMON FAULT **R** = RARE FAULT

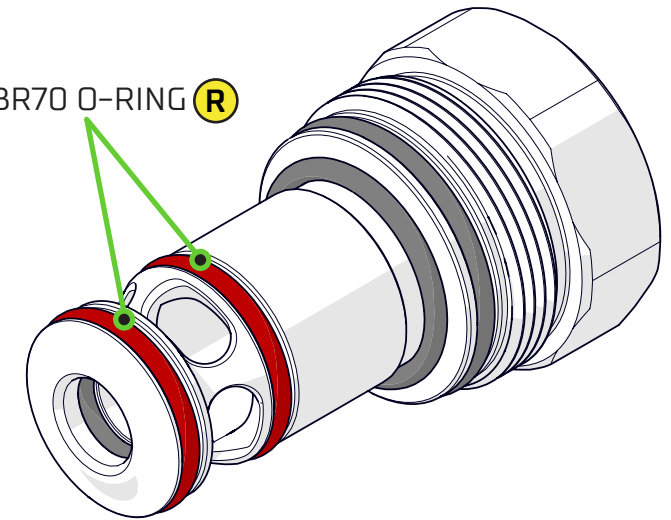
BOLT



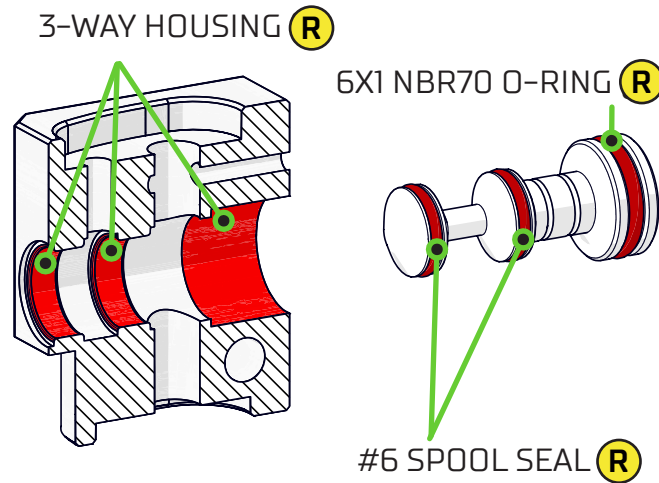
CAN



BOLT GUIDE

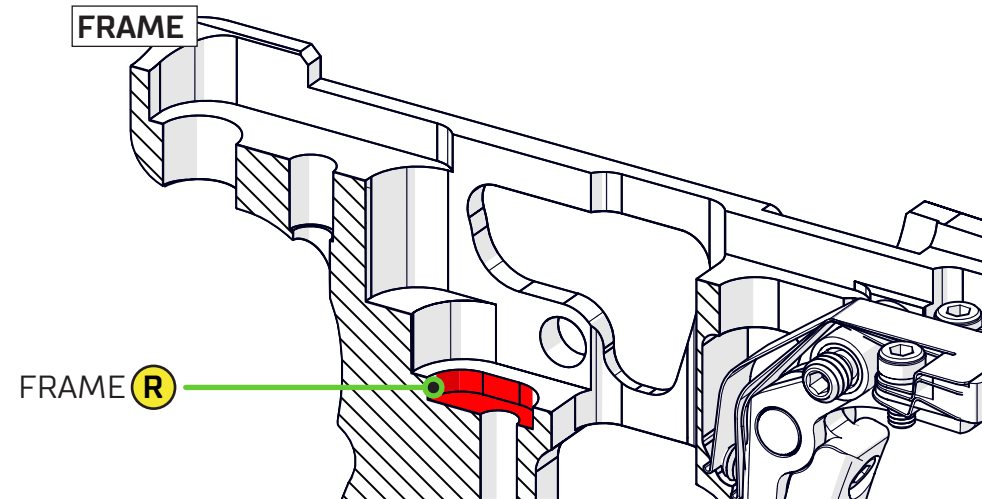
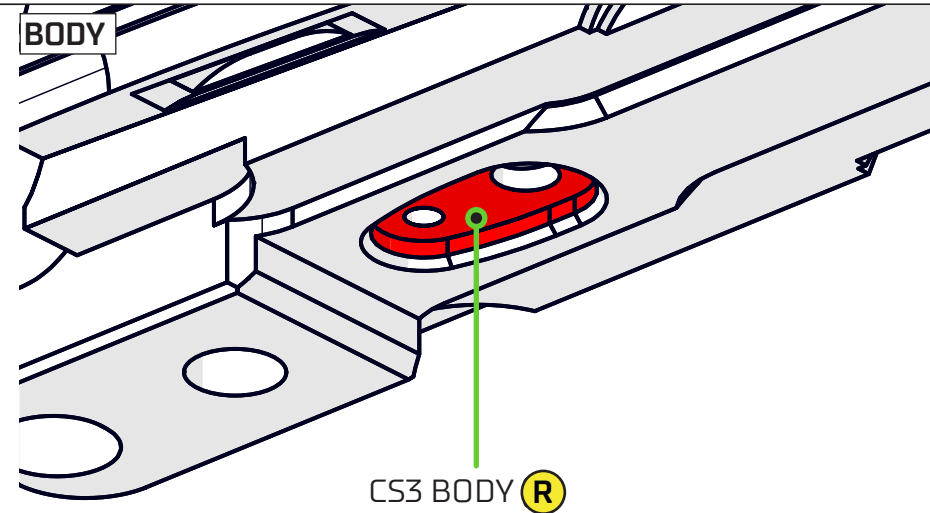
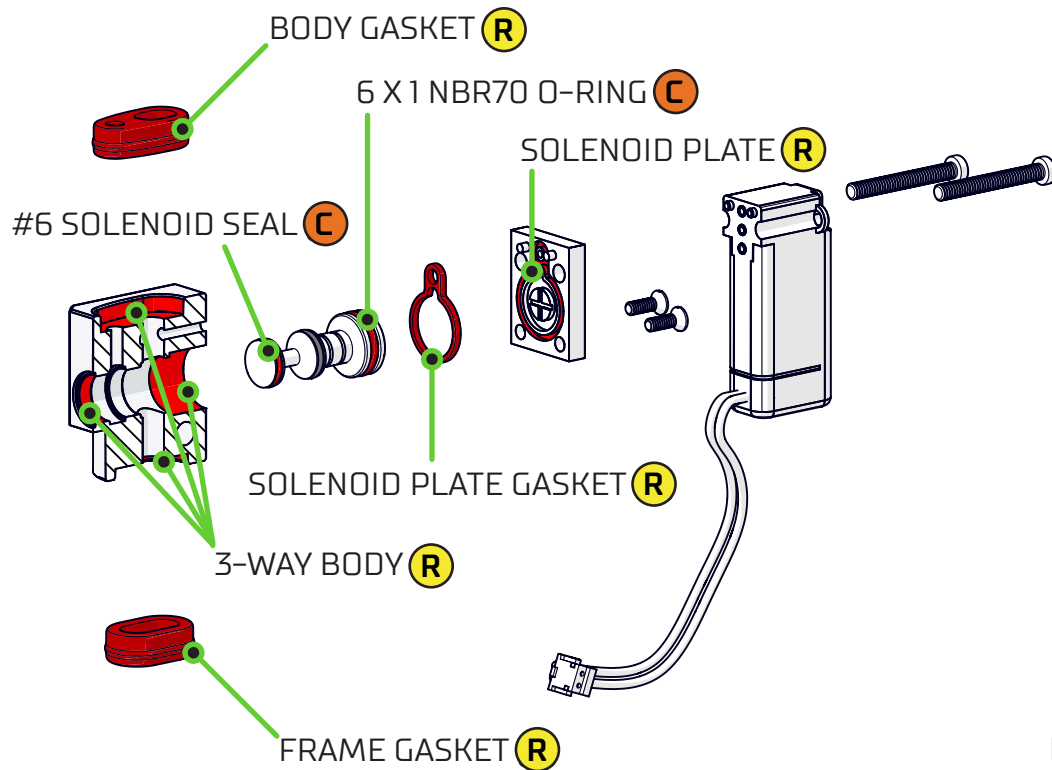


3-WAY HOUSING





SOLENOID





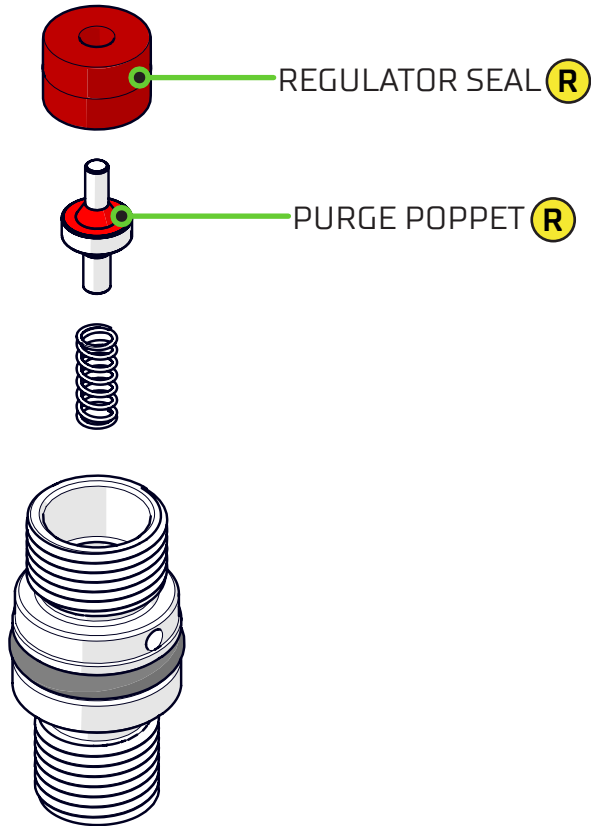
25

CONSTANT HIGH VELOCITY

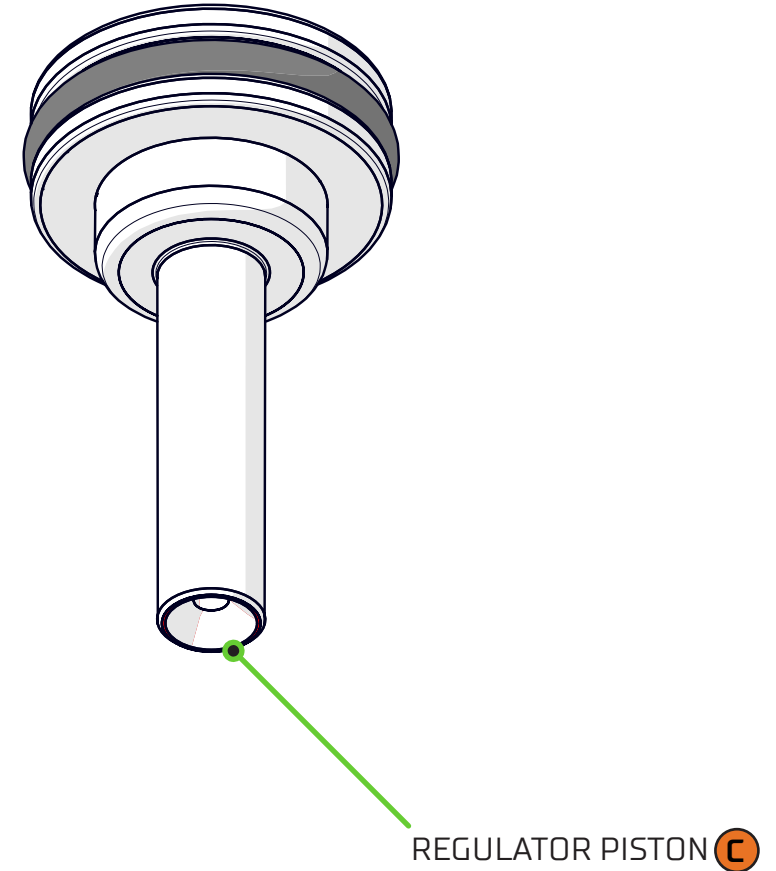
CLEAN AND LUBRICATE / CHANGE HIGHLIGHTED SEALS AND FACES

C = COMMON FAULT **R** = RARE FAULT

REGULATOR ADJUSTER SCREW

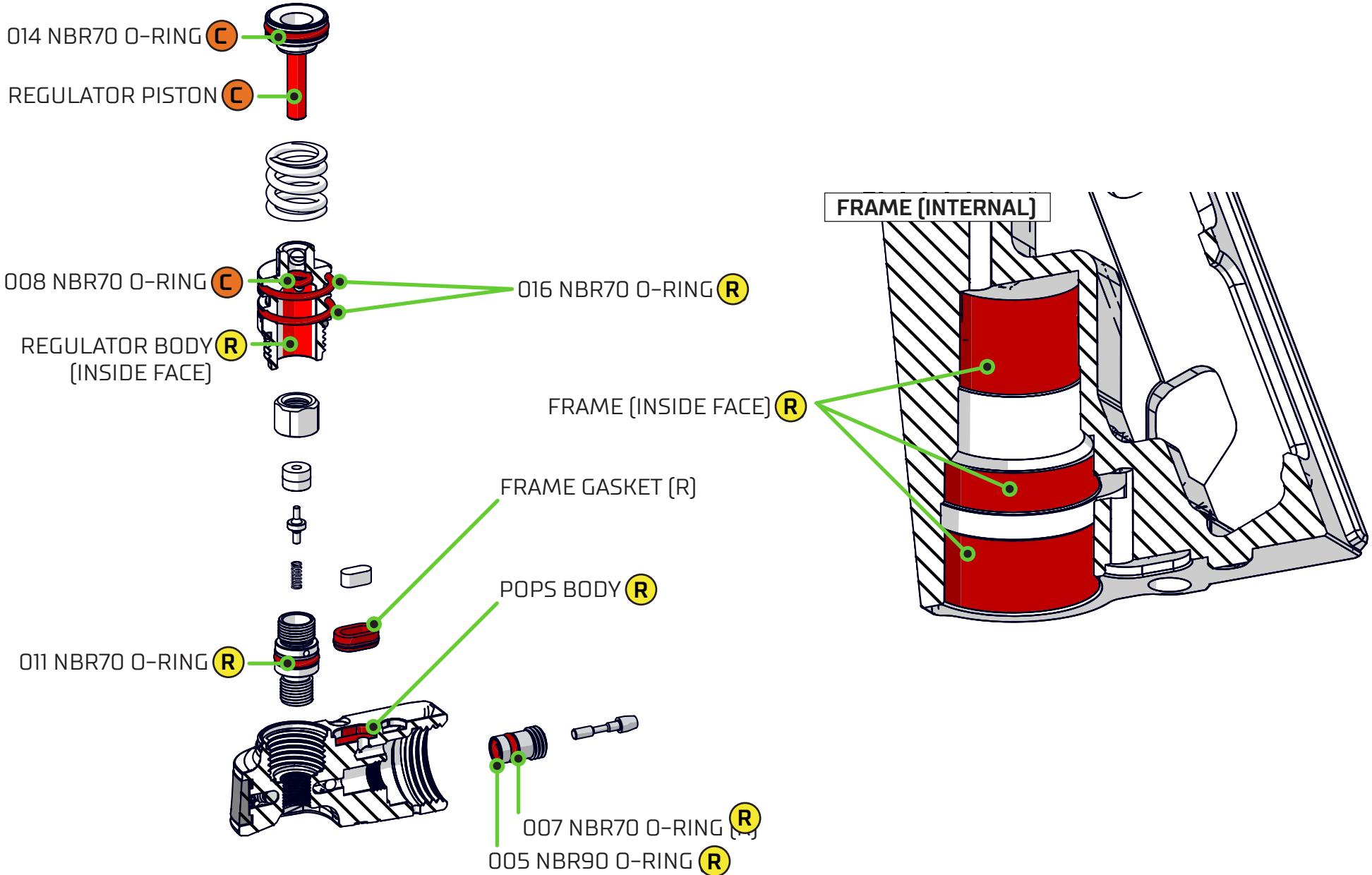


REGULATOR PISTON





REGULATOR ASSEMBLY





27

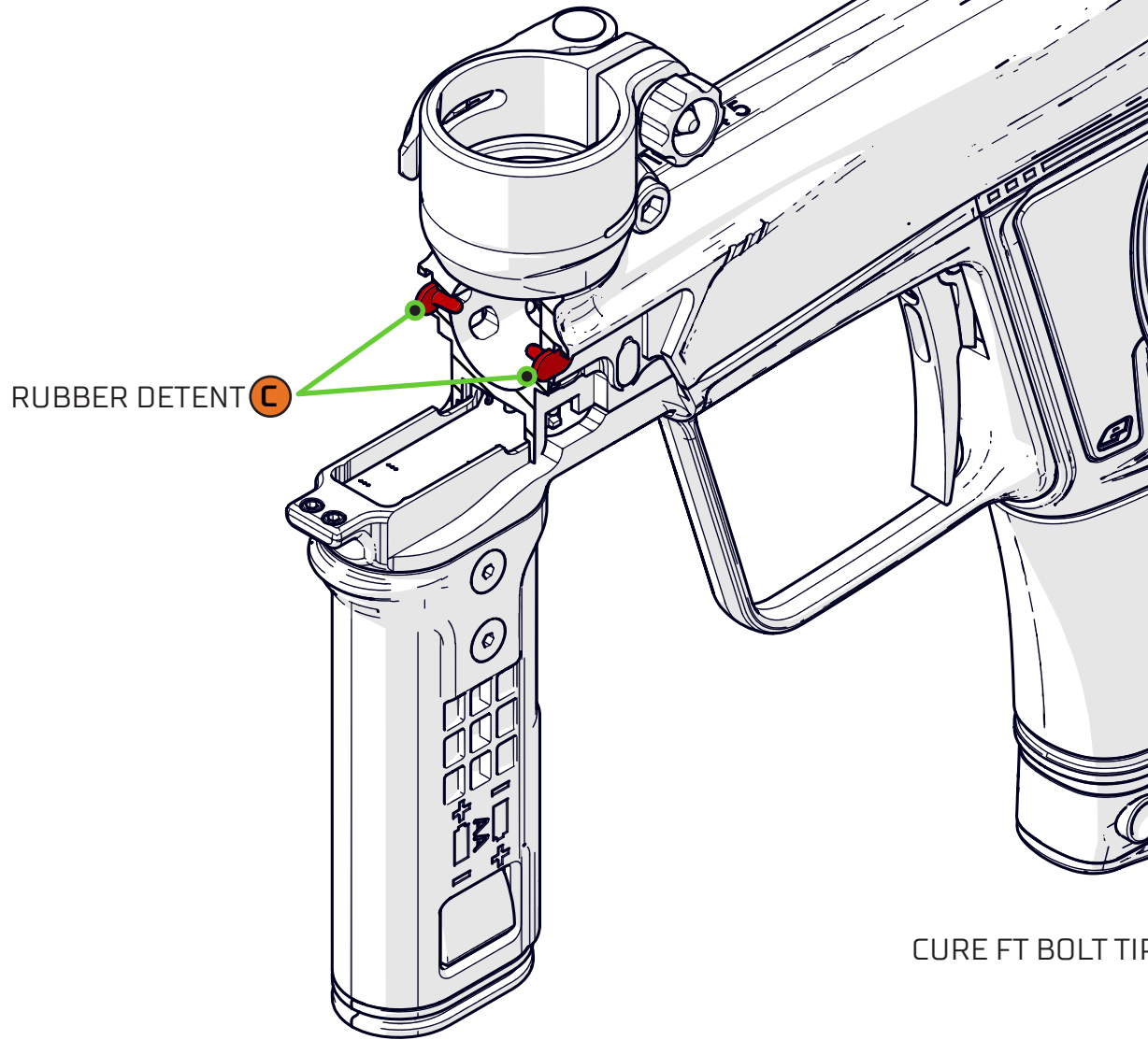
BREAKING PAINT IN THE BREECH

CLEAN AND LUBRICATE / CHANGE HIGHLIGHTED SEALS AND FACES

C = COMMON FAULT **R** = RARE FAULT

DETENTS

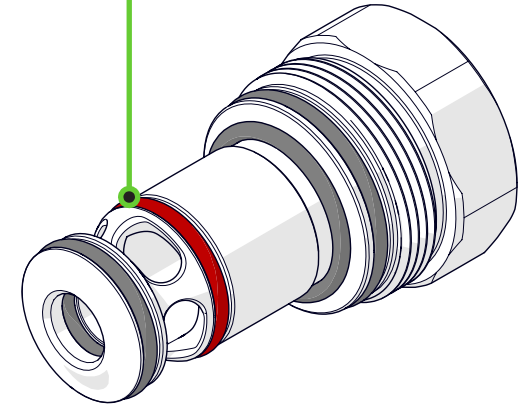
BOLT GUIDE



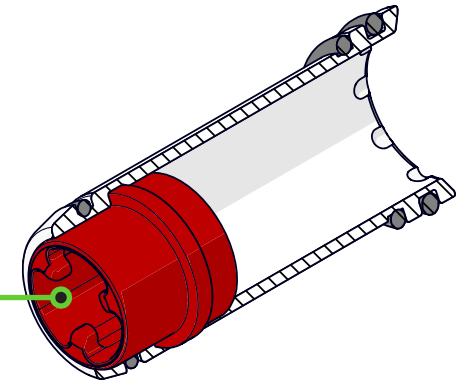
RUBBER DETENT **C**

BOLT

013 NBR70 O-RING **C**



CURE FT BOLT TIP **R**

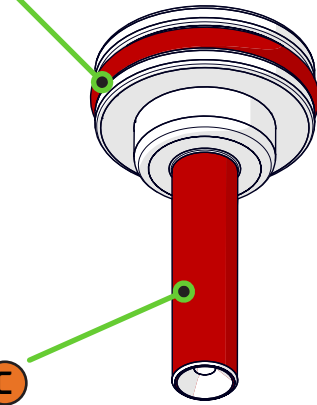




REGULATOR PISTON

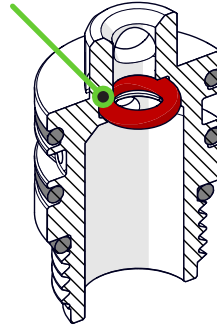
014 NBR70 O-RING **C**

PISTON **C**



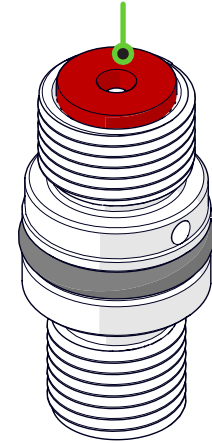
REGULATOR BODY

008 NBR70 O-RING **C**



REGULATOR SEAL

REGULATOR SEAL **C**

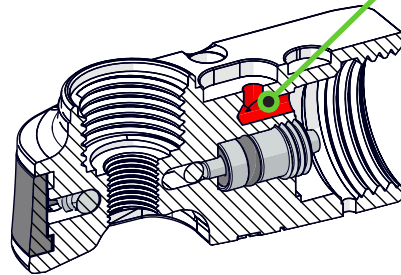


POPS ASSEMBLY

POPS FILTER **R**



POPS INTERNAL PORTING **R**





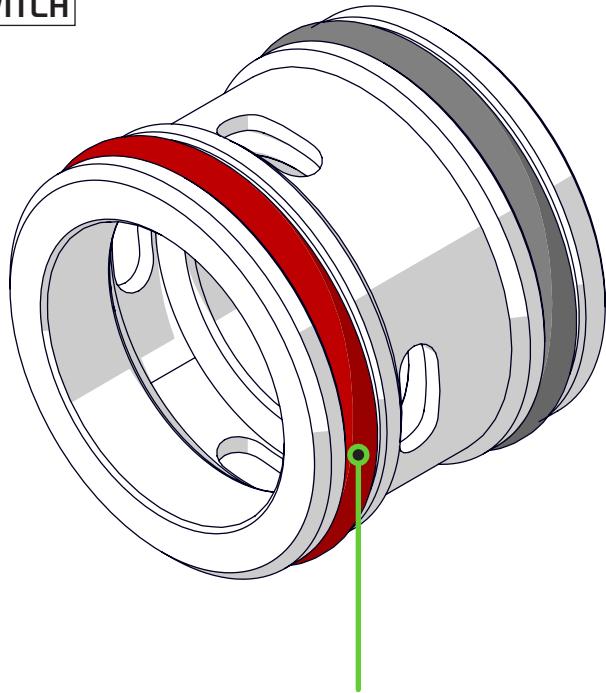
29

INEFFICIENT / LOW SHOT COUNT

CLEAN AND LUBRICATE / CHANGE HIGHLIGHTED SEALS AND FACES

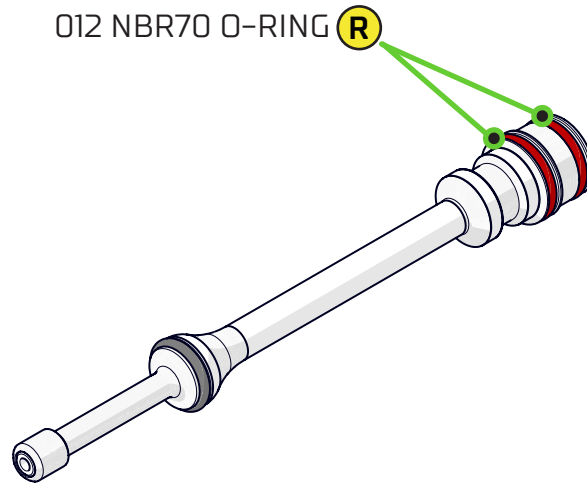
C = COMMON FAULT **R** = RARE FAULT

SWITCH



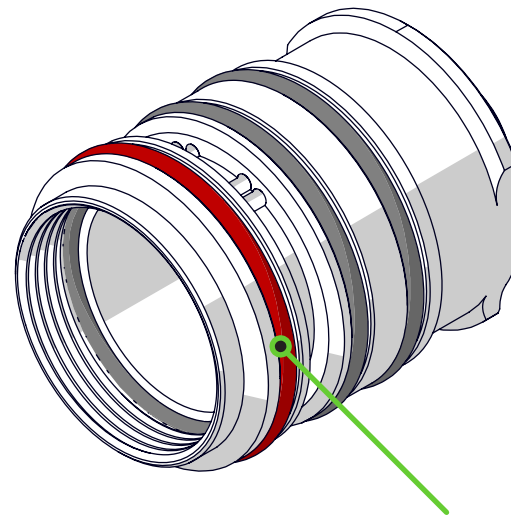
016 NBR70 O-RING **C**

SPOOL



012 NBR70 O-RING **R**

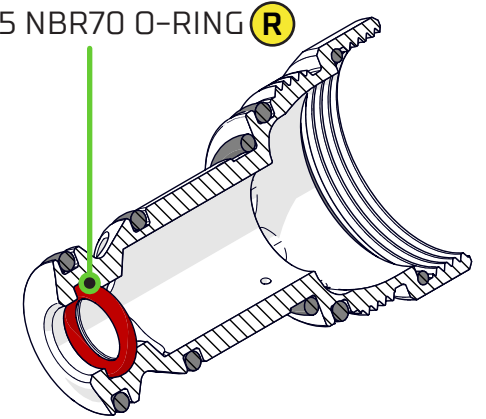
SWITCH BODY



021 NBR70 O-RING **C**

BOLT GUIDE

6 X 1.5 NBR70 O-RING **R**





GET MORE
PLANETECLIPSE.COM

This product is covered by and/or licensed under one or more of the following patents:

G.B. Patents:

2,342,710; 2,345,953; 2,352,022; 2,391,292; 2,391,063;

U.S. Patents:

7,836,873; 7,603,995; 7,073,284; 8,104,463; 7,509,953; 7,921,839; 7,089,697; 7,866,307; 8,082,912; 7,076,906; 7,607,424; 7,980,238;
8,960,175; 8,528,877; 8,201,547; 8,397,706; 8,210,160; 7,073,284; 6,311,682; 6,748,938; 6,860,259; 6,941,693; 6,973,748; 5,881,707;
5,967,133; 6,035,843; 6,474,326; 6,637,421; 6,644,295; 6,810,871; 6,901,923; 7,121,272; 7,100,593; 7,610,908; 7,603,997; 7,946,285;
6,349,711; 7,044,119; 7,185,646; 7,461,646; 7,556,032; 7,591,262; 7,617,819; 7,617,820; 7,640,925; 7,640,926; 7,866,308;

Application numbers:

12/256,832; 12/613,958; 12/493,777; 11/654,721; 11/747,107; 12/503,504; 11/781,821; 60/832,548; 11/965,886; 10/280,115

Additional U.S. and International Patents may be pending.

USA

130 Franklin Street
Building L4 & L5
Warren, RI, 02885, USA
Call: +1 401 247 9061
info.usa@planeteclipse.com

UK

Unit 14 Premier Park, Acheson Way
Trafford Park Road, Trafford Park
Manchester, M17 1GA, England
Call: +44(0) 161 872 5572
info.europe@planeteclipse.com

EUROPE

Pe-Paintball.De Gmbh
Langenberger Str. 9 Tor 5 & 6
Düsseldorf 40233, Germany
Call +49 (0) 211 210 230-0
planeteclipse.com/contact

© Planet Eclipse Ltd.

19018-WM005